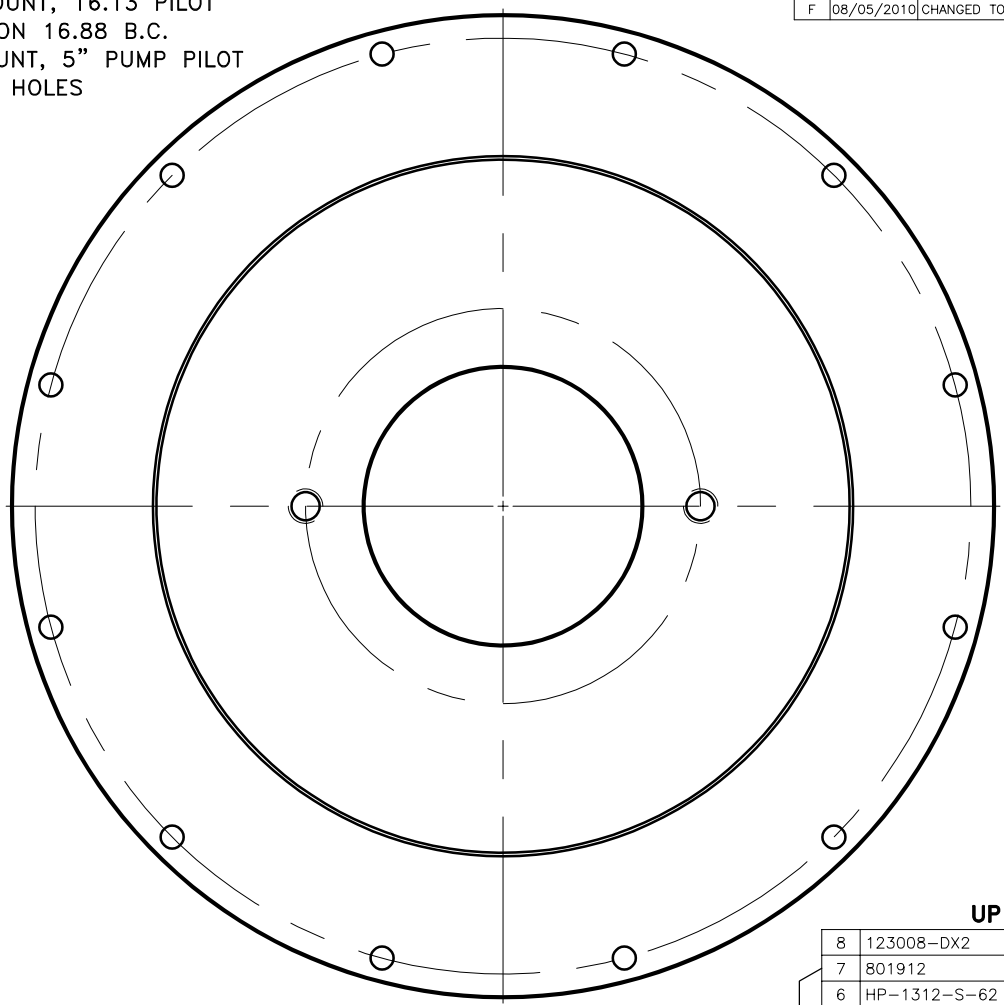
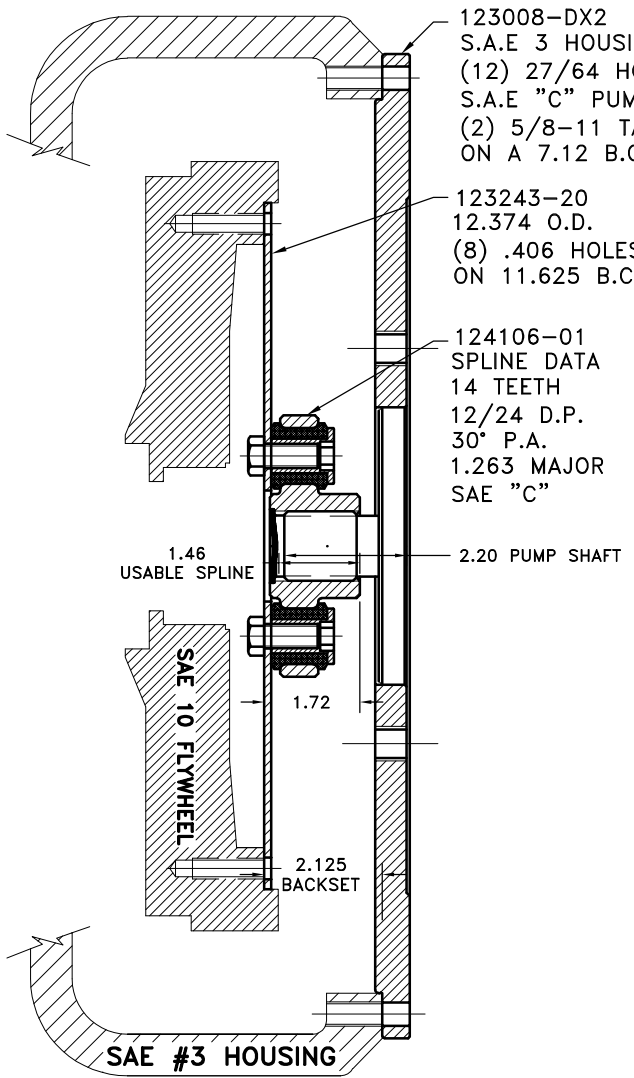


REV	DATE	CHANGE DESCRIPTION	MOD.BY	CK1	CK2
F	08/05/2010	CHANGED TO THREADED INSERTS	PB	RJH	JM



COUPLING ASS'Y #123366

UP TO 65 HP

QTY.	DESCRIPTION	PART NUMBER	DET.
1	FLYWHEEL PLATE	123243-20	1
1	COUPLING HUB	124106-01	2
6	NEOPRENE INSERT	H62500	3
6	THREADED BUSHING	123727	4
1	HUBBARD PLUG	HP-1312-S-62	6
1	GREASE	801912	7
1	PUMP MOUNT PLATE	123008-DX2	8

APPLY SUPPLIED COUPLING GREASE  
TO INTERNAL AND EXTERNAL SPLINE  
AT ASSEMBLY

SYMBOLS		DET.	PART NUMBER	DESCRIPTION	QTY.
	FLATNESS				
	STRAIGHTNESS				
	ANGULARITY				
	PERPENDICULARITY				
	PARALLELISM				
	CONCENTRICITY				
	TRUE POSITION				
	ROUNDNESS				
	CIRCULAR RUN OUT				
	TOTAL RUN OUT				
	CYLINDRICITY				
	FINISH				

DO NOT SCALE DRAWING		TITLES
TOLERANCES UNLESS OTHERWISE SPECIFIED		FLYWHEEL COUPLING ASS'Y WITH PUMP MOUNT PLATE
125 MAXIMUM ANGLE ±1/2° FRACTION ±1/32 DECIMAL .00 ±.01 .000 ±.005 .0000 ±.0005	MATERIAL	
CLASS	DRAWN BY	DATE
SAE 10	LANNEN	6-20-89
DESCRIPTION	CHECKED BY	SCALE
10,3,14T12/24,C2,65		
MAKE: <input checked="" type="checkbox"/> BUY: <input type="checkbox"/>	DRAWING NO.	
	123025	
	SHEET OF REV.	

THIS DRAWING IS THE PROPERTY OF HAYES MFG. INC. AND IS LOANED SUBJECT TO THE CONDITION THAT IT SHALL NOT BE REPRODUCED, COPIED, LOANED OR OTHERWISE DISPOSED OF, DIRECTLY OR INDIRECTLY. IT SHALL BE USED AS A MEANS OF REFERENCE TO WORK FURNISHED BY THIS COMPANY ONLY AND IS NOT TO BE SUBMITTED TO OUTSIDE PARTIES FOR EXAMINATION WITHOUT OUR CONSENT.