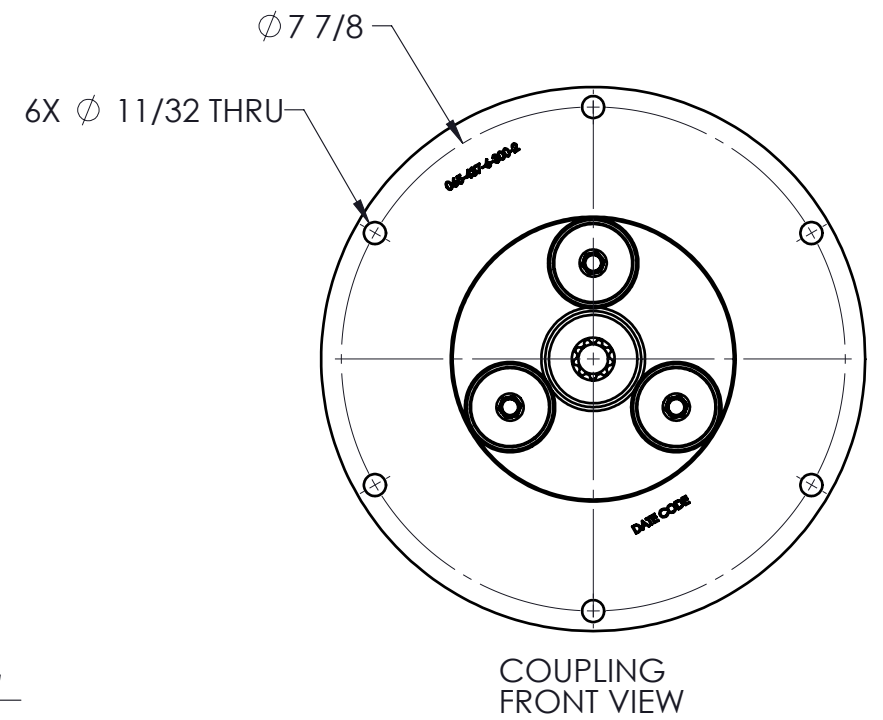
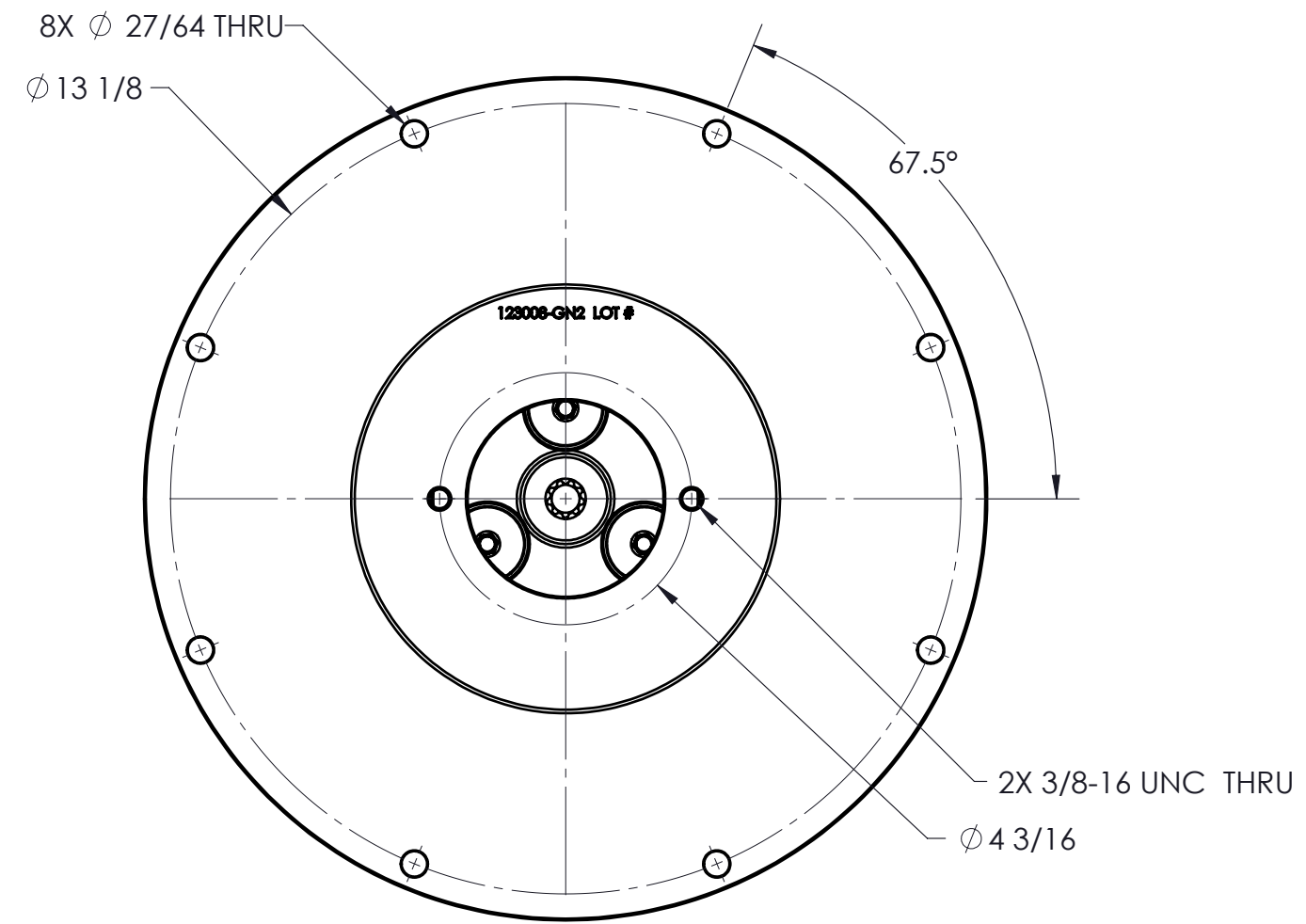
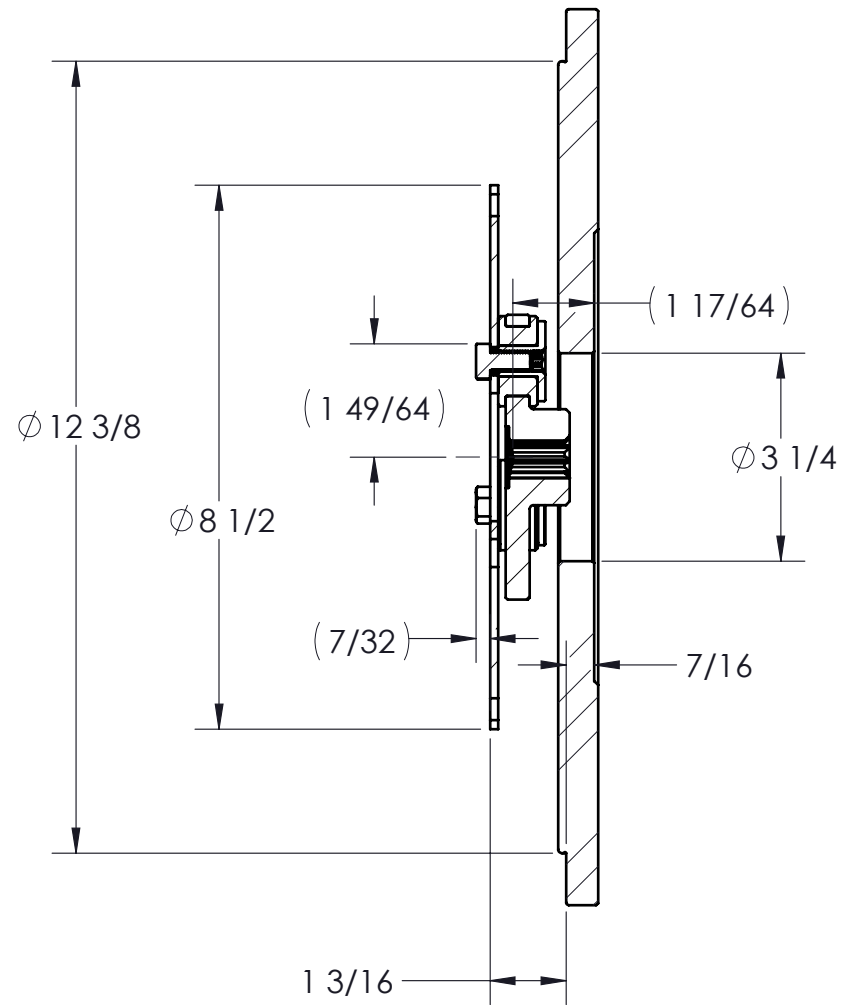


CUSTOMER DRAWING

REVISIONS						
ZONE	REV.	DESCRIPTION	DATE	APR 1	APR 2	DCR #
	E	CHANGED TO PILOTED	05/18/23	ZS		4306



PUMP DRIVE SPECS	
FLYWHEEL	SAE 6.5
HOUSING	SAE 5
PUMP FLANGE	SAE A 2-BOLT
PUMP SHAFT	9T 16/32 "A"
HP RATING (@1800 RPM)	20

**PROPRIETARY AND CONFIDENTIAL**  
 THE INFORMATION CONTAINED IN THIS DRAWING IS THE SOLE PROPERTY OF HAYES MANUFACTURING. ANY REPRODUCTION IN PART OR AS A WHOLE WITHOUT THE WRITTEN PERMISSION OF HAYES MANUFACTURING IS PROHIBITED.

UNLESS OTHERWISE SPECIFIED:		DIMENSIONS ARE IN INCHES	
FLATNESS	CONCENTRICITY	COUNTERBORE	COUNTERSINK
ROUNDNESS	TRUE POSITION	HOLE DEPTH	SYMMETRIC
PARALLELISM	PERPENDICULARITY		
DIAMETER	CIRCULAR RUN OUT		
"R" RADIUS	TOTAL RUN OUT		

CLASS	DESCRIPTION	MAKE	WEIGHT	HEAT TREAT
SAE 6.5	6-1/2,5,9T16/32,A2,20	X	27.6 LB	
		BUY	VOLUME	FINISH
			CU.IN.	

ITEM NO.	PART NUMBER	DESCRIPTION	QTY.
1	123347	FLYWHEEL COUPLING	1
2	123008-GN2	PUMP MOUNT PLATE	1

**COUPLING IS NOT SERVICABLE**

NAME	DATE
SIETING	4/27/2022
PCM APPR.	
ENG APPR.	ZS 5/18/2022
SHIP. APPR.	
QA APPR.	
MATERIAL	

**HAYES**

TITLE: PUMP DRIVE KIT

DWG. NO. 123239

REV E

DO NOT SCALE SHEET 1 OF 4