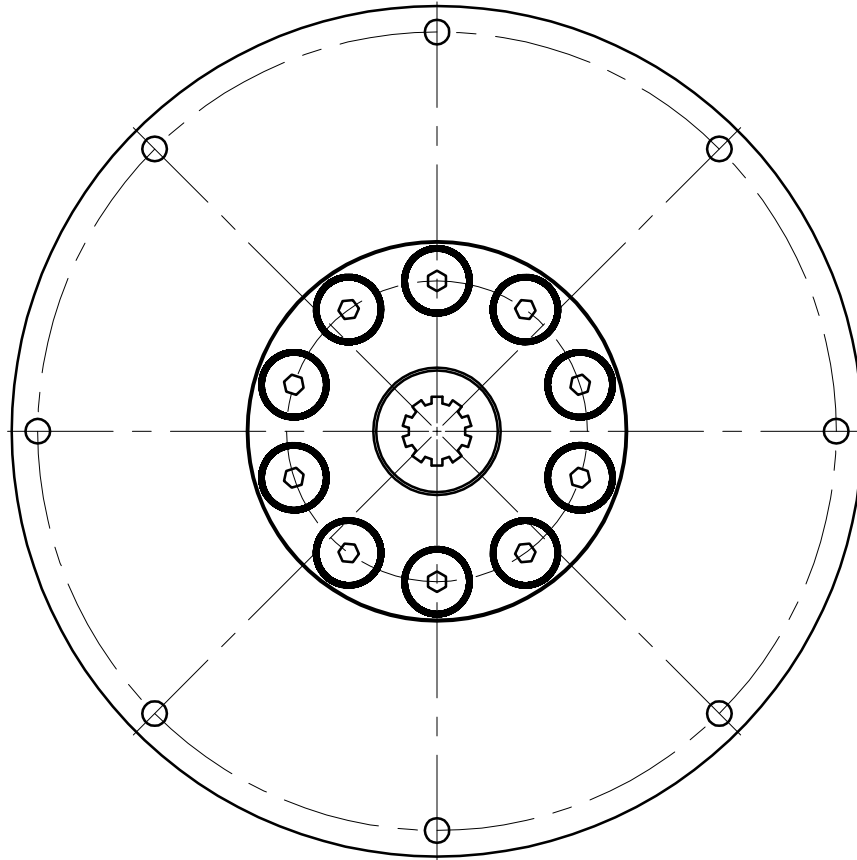
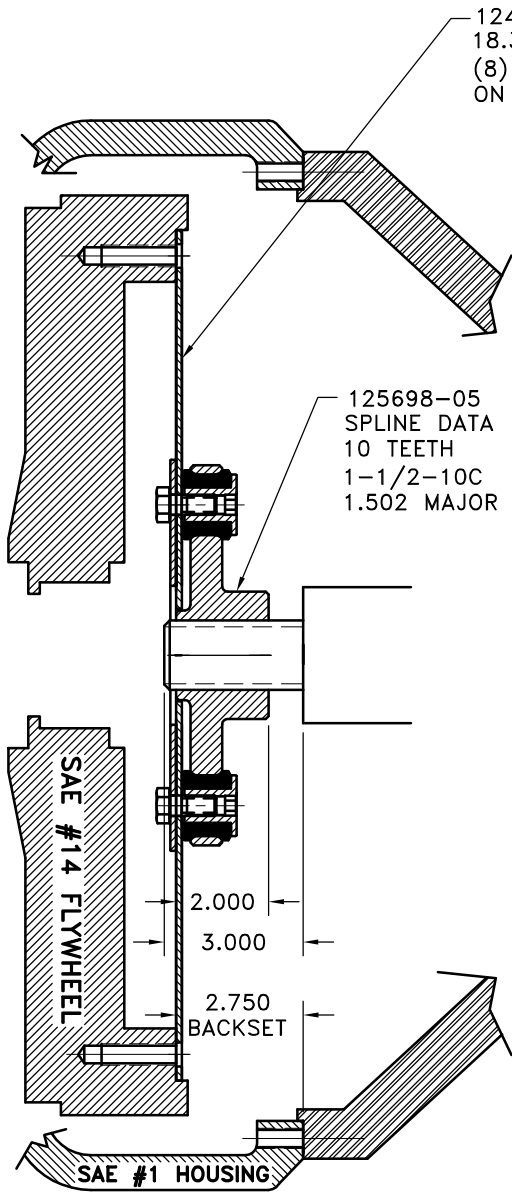


REV	DATE	CHANGE DESCRIPTION	MOD. BY	CK1	CK2
A	07/22/2002	ADDED BACKING PLATE	ZS	RJH	HM



UP TO 250 HP

DET.	PART NUMBER	DESCRIPTION	QTY.
7	801912	GREASE	1
6	H92500	NEOPRENE INSERT	10
5	HX200	7/16-20 x 1" HHB	10
4	124412	THREADED BUSHING	10
3	125698-05	COUPLING HUB	1
2	124961-01	BACKING PLATE	1
1	124243-16	FLYWHEEL PLATE	1

SYMBOLS		DET.	PART NUMBER	DESCRIPTION	QTY.
▭	FLATNESS	<p>DO NOT SCALE DRAWING</p> <p>TOLERANCES UNLESS OTHERWISE SPECIFIED</p> <p>1/32" MAXIMUM</p> <p>ANGLE ±1/2°</p> <p>FRACTION ±1/32</p> <p>DECIMAL .00 ±.01</p> <p>.000 ±.005</p> <p>.0000 ±.0005</p> <p>- UNLESS OTHERWISE SPECIFIED - REMOVE FIRST THREAD ON ALL TAPPED HOLES</p> <p>BREAK ALL SHARP CORNERS .010 TO .020 STAMP OR MARK DRAWING NO.</p>			
—	STRAIGHTNESS				
∠	ANGULARITY				
⊥	SQUARENESS				
∥	PARALLELISM				
⊙	CONCENTRICITY				
⊕	TRUE POSITION				
⊖	ROUNDNESS				
⊘	CIRCULAR RUN OUT				
⊙	TOTAL RUN OUT				
⊘	CYLINDRICITY				
√	FINISH				
		HAYES MANUFACTURING INC. ®		TITLE FLYWHEEL COUPLING ASS'Y	
		DRAWN BY SIETING		DATE 02-21-00	DRAWING NO. 125796
		CHECKED BY RJH		SCALE	SHEET OF REV.

THIS DRAWING IS THE PROPERTY OF HAYES MFG. INC. AND IS LOANED SUBJECT TO THE CONDITION THAT IT SHALL NOT BE REPRODUCED, COPIED, LOANED OR OTHERWISE DISPOSED OF, DIRECTLY OR INDIRECTLY. IT SHALL BE USED AS A MEANS OF REFERENCE TO WORK FURNISHED BY THIS COMPANY ONLY AND IS NOT TO BE SUBMITTED TO OUTSIDE PARTIES FOR EXAMINATION WITHOUT OUR CONSENT.