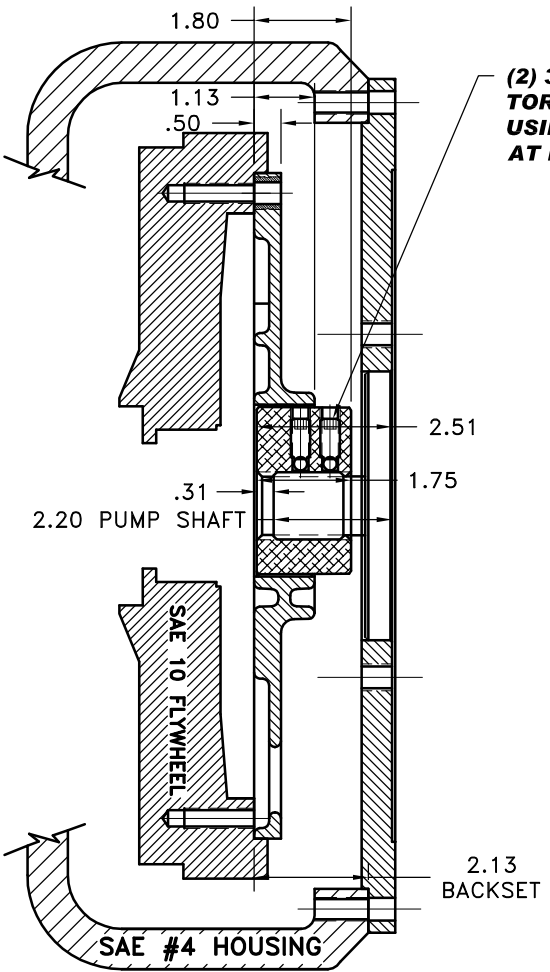
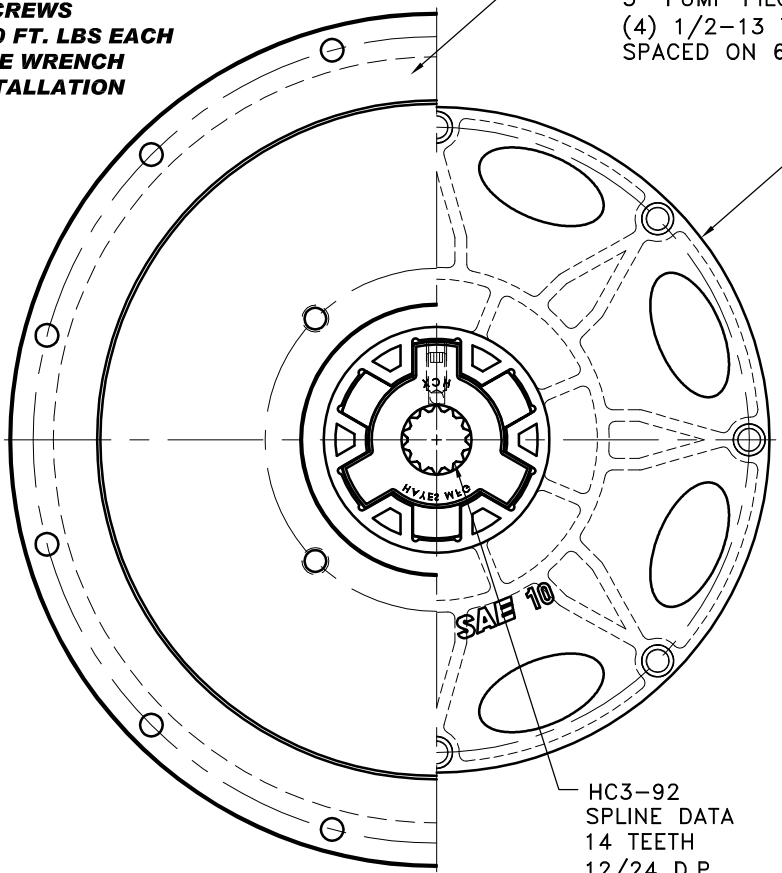


REV	DATE	CHANGE DESCRIPTION	MOD.BY	CK1	CK2
A1	07/07/2008	UPDATED INSTALLATION NOTES.	ZS	RJH	HM



**(2) 3/8" SET SCREWS  
TORQUE TO 20 FT. LBS EACH  
USING TORQUE WRENCH  
AT FINAL INSTALLATION**



PT# 123008-EX4  
S.A.E. 4 HOUSING MOUNT 27/64 DRILL THRU  
12 HOLES EQUALLY SPACED ON 15.00 B.C.  
5" PUMP PILOT S.A.E. "C" PUMP MOUNT.  
(4) 1/2-13 TAPPED HOLES EQUALLY  
SPACED ON 6.375 B.C.

C-010  
S.A.E. 10 FIBERGLASS REINFORCED  
NYLON DRIVE PLATE  
(8) .416 HOLES EQ.  
SPACED ON A 11.625 B.C.  
"C" SERIES DRIVE

**IMPORTANT INSTALLATION  
NOTE!!!!**

IMPROPER INSTALLATION OF HUB COULD CAUSE  
PREMATURE WEAR AND OR FAILURE.

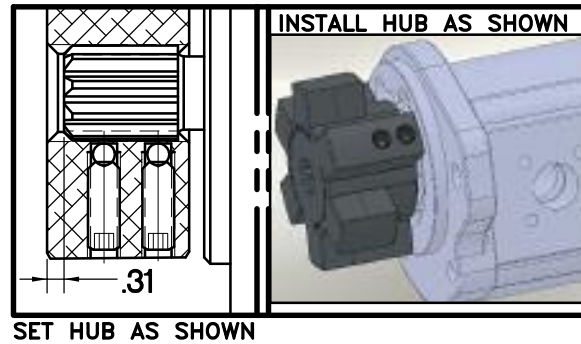
IF YOU HAVE QUESTIONS CONCERNING LOCATION  
OF METAL HUB ON PUMP SHAFT PLEASE CONTACT  
DISTRIBUTOR OR FACTORY FOR FURTHER  
INFORMATION.

**BOTH HUB SET SCREWS MUST BE PROPERLY  
TORQUED TO 25 FT.LBS. USING TORQUE WRENCH .  
PLEASE CONTACT DISTRIBUTOR OR FACTORY FOR  
ANY FURTHER QUESTIONS.**

**"C" SERIES TORQUE RANGE  
65-175 HP**

**NOTE: THIS STEP IS IMPORTANT TO  
ENSURE FULL SPLINE ENGAGEMENT.**

- 1) PRESET HUB ON SHAFT AS SHOWN.
- 2) IF YOUR PUMP SHAFT VARIES FROM THE DRAWN  
SHAFT LENGTH, CONTACT FACTORY FOR  
RECOMMENDATIONS.
- 3) **TORQUE BOTH SET SCREWS TO 25 FT.LBS. USING  
TORQUE WRENCH.**
- 4) SHAFT SHOULD HAVE FULL SPLINE ENGAGEMENT INTO  
HUB, IF NOT CONTACT FACTORY FOR  
RECOMMENDATIONS (231) 879-3372.



THIS DRAWING IS THE PROPERTY OF HAYES MFG. INC. AND IS LOANED  
SUBJECT TO THE CONDITION THAT IT SHALL NOT BE REPRODUCED,  
COPIED, LOANED OR OTHERWISE DISPOSED OF, DIRECTLY OR INDIRECTLY.  
IT SHALL BE USED AS A MEANS OF REFERENCE TO WORK FURNISHED BY  
THIS COMPANY ONLY AND IS NOT TO BE SUBMITTED TO OUTSIDE PARTIES  
FOR EXAMINATION WITHOUT OUR CONSENT.

DET.	PART NUMBER	DESCRIPTION	QTY.
3	123008-EX4	PUMP MOUNT PLATE	1
2	HC3-92	C SERIES HEX~FLX HUB	1
1	C-010	SAE 10 HEX~FLX DRIVE PLATE	1

SYMBOLS		DET.	PART NUMBER	DESCRIPTION	QTY.
	FLATNESS	DO NOT SCALE DRAWING			
	STRAIGHTNESS	TOLERANCES UNLESS OTHERWISE SPECIFIED			
	PERPENDICULARITY	MAXIMUM			
	PARALLELISM	ANGLE ±1/2°			
	CONCENTRICITY	FRACTION ±1/32			
	TRUE POSITION	DECIMAL			
	ROUNDNESS	.00 ±.01			
	CIRCULAR RUN OUT	.000 ±.005			
	TOTAL RUN OUT	.000 ±.005			
	CYLINDRICITY	.000 ±.005			
	FINISH	- UNLESS OTHERWISE SPECIFIED - REMOVE FIRST THREAD ON ALL TAPPED HOLES			
		DRAWN BY		DATE	DRAWING NO.
		SIETING		07-12-07	C-010-HC3-92-EX4
		CHECKED BY		SCALE	SHEET OF REV.
		RJH			1 OF 1



TITLE  
**HEX~FLX "C" SERIES 2 PIECE COUPLING**