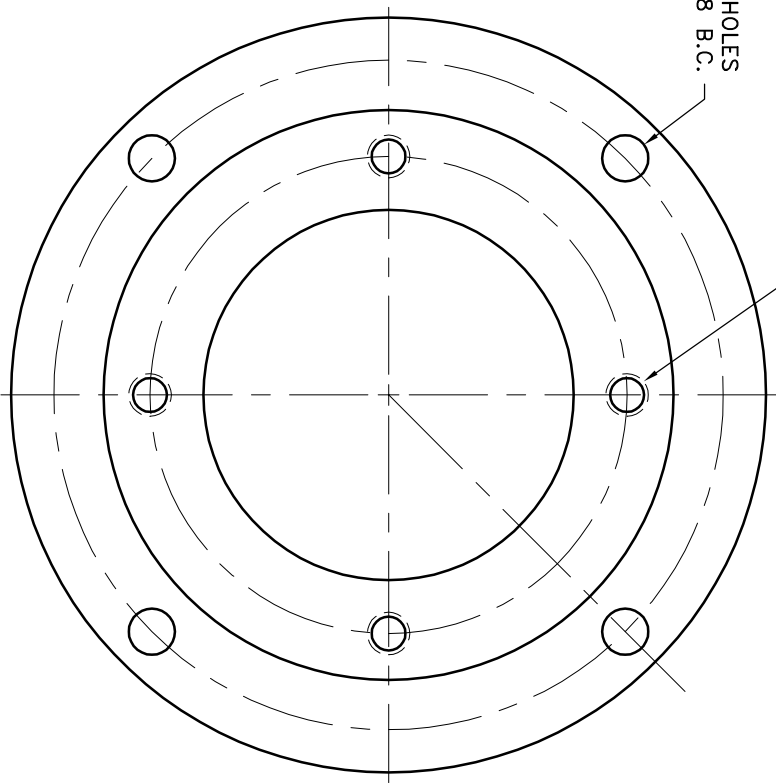
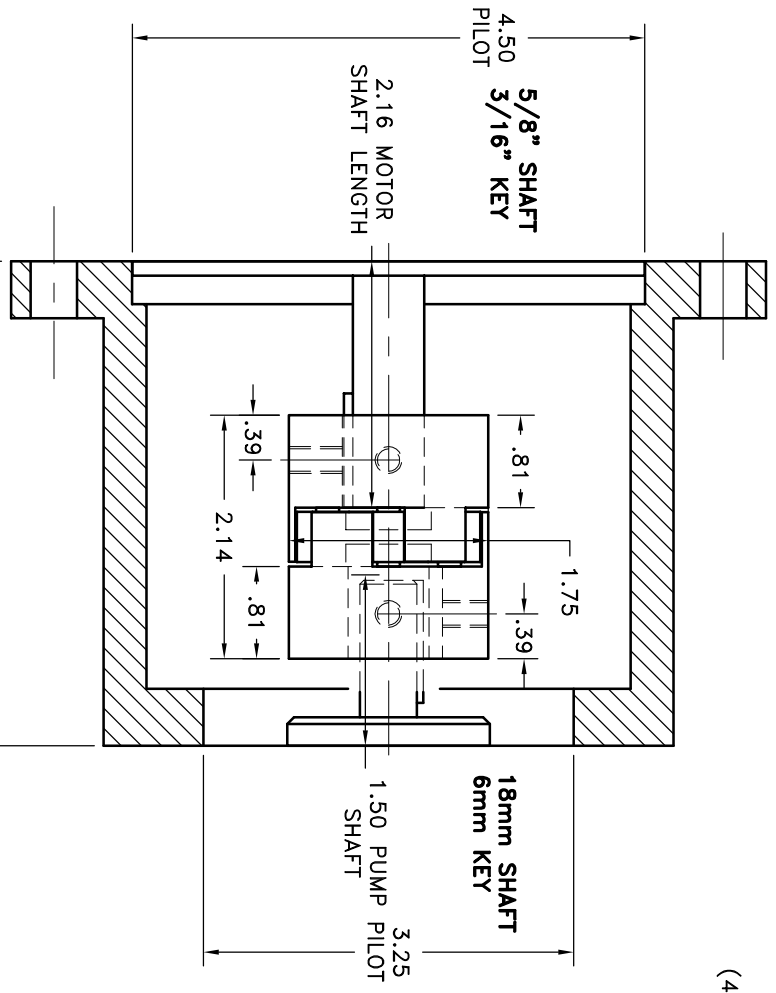


REV	DATE	CHANGE DESCRIPTION	MOD BY	CHK1	CHK2



(4) 3/8-16 TAPPED HOLES
ON A 4.18 B.C.

(4) 13/32 HOLES
ON A 5.88 B.C.

NO.	AC-501	ACCESS COVER	QTY.
5	AC-501	ACCESS COVER	1
4	E501-2/4-4.25	MOTOR FRAME ADAPTER	1
3	L075N	L SERIES NEOPRENE INSERT	1
2	L075x18x6	L SERIES COUPLING HALF	1
1	L075x5/8x3/16	L SERIES COUPLING HALF	1

SYMBOLS	DESCRIPTION
—	STRAIGHTNESS
⊥	ANGULARITY
⊙	ROUNDNESS
⊕	CONCENTRICITY
⊖	TRUE POSITION
⊘	ROUNDNESS
⊙	CIRCULAR RUN OUT
⊖	TOTAL RUN OUT
⊖	TAPER
⊖	FINISH

DO NOT SCALE	TOLERANCES UNLESS OTHERWISE SPECIFIED	ANGLE ±1/2°	FRACTION ±1/32	DECIMAL	±.005	±.0025	±.0015	±.001	±.0005	±.00025	±.00015

TITLE	DATE	DRAWING NO.
L075 COUPLING W/MOTOR ADAPTER	01-17-08	E501-L075-01

DRW BY	CHECKED BY	SCALE	SHEET	OF	REV.
RJH					

THIS DRAWING IS THE PROPERTY OF HAYES MFG. INC. AND IS LOANED TO YOU FOR INFORMATION ONLY. IT SHALL NOT BE REPRODUCED, COPIED, LOANED OR OTHERWISE DISPOSED OF, DIRECTLY OR INDIRECTLY, IN ANY MANNER WITHOUT THE WRITTEN CONSENT OF HAYES MFG. INC. FOR EXAMINATION WITHOUT OUR CONSENT.