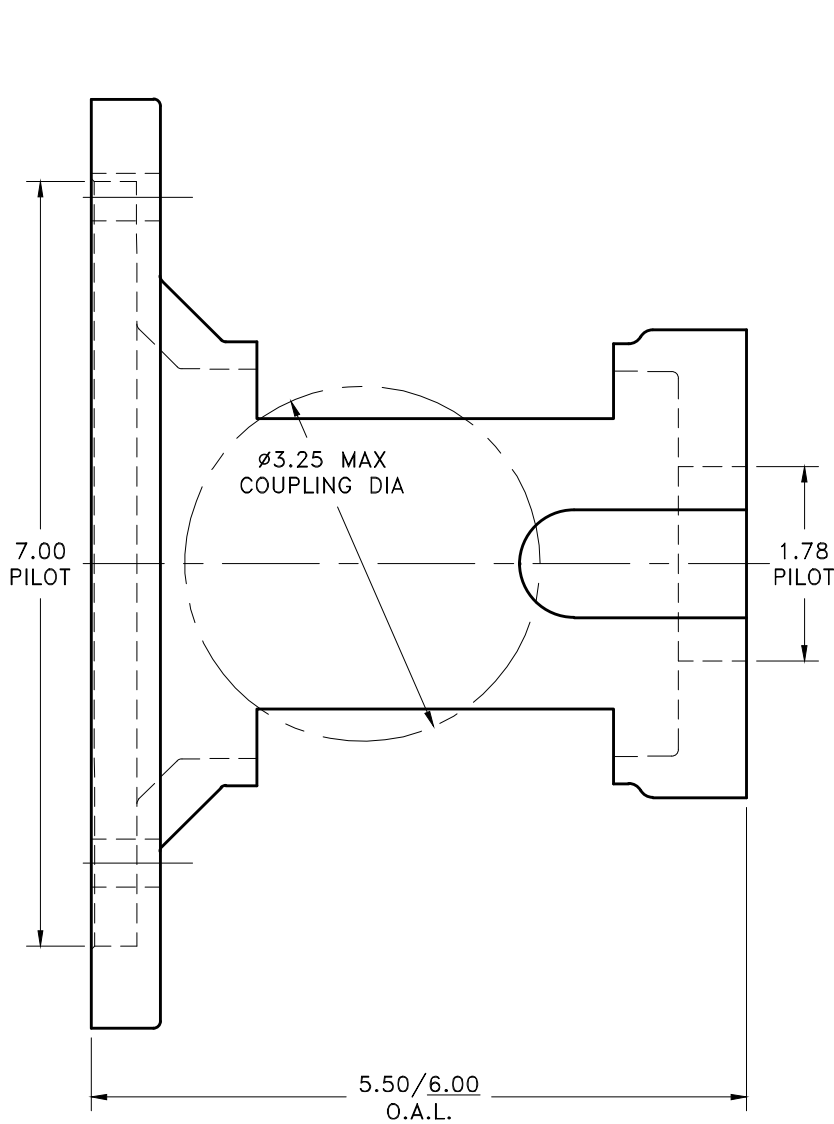
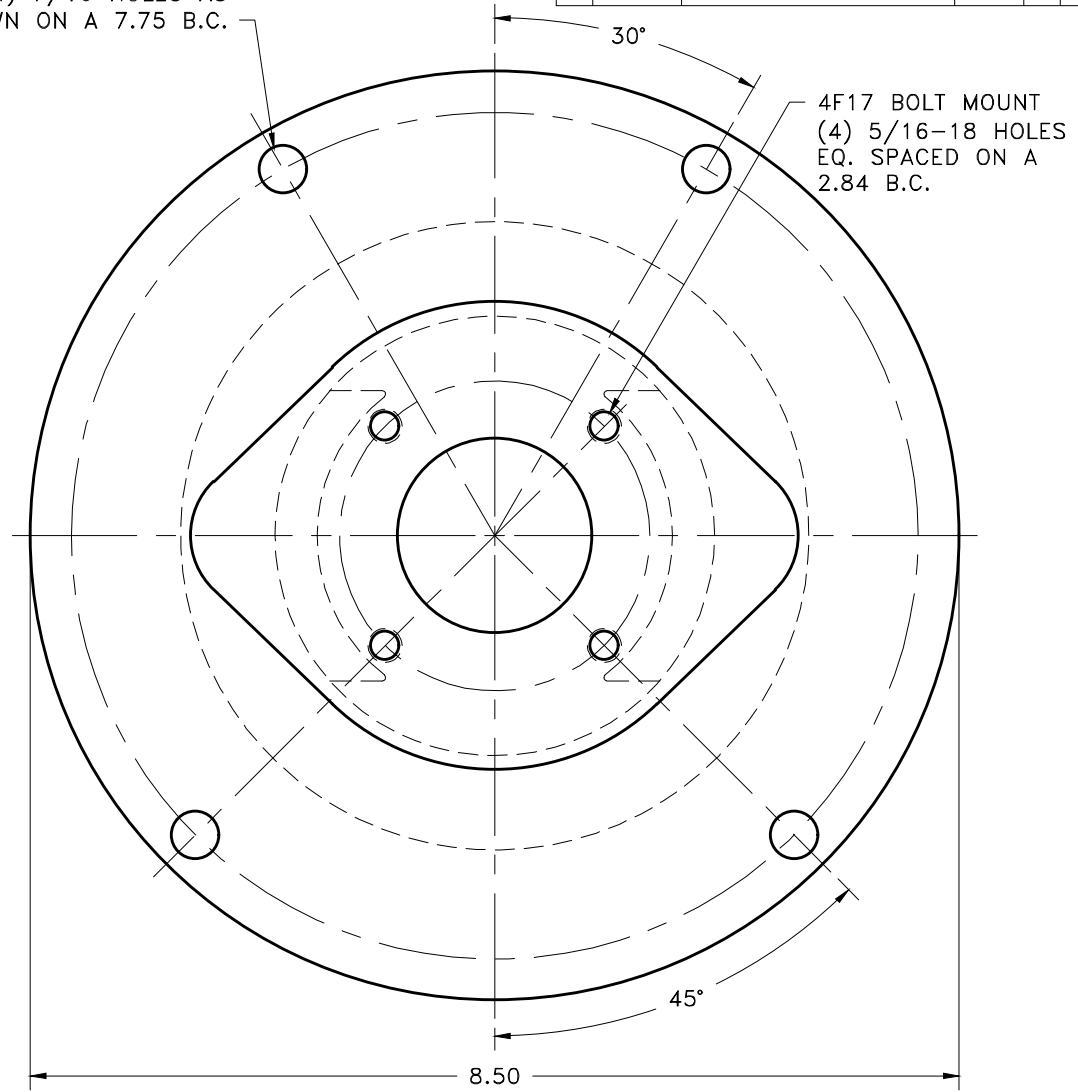


REV	DATE	CHANGE DESCRIPTION	MOD. BY	CK1	CK2



(4) 7/16 HOLES AS SHOWN ON A 7.75 B.C.



**NOTE: UNDERLINED LENGTH DIM. IS STANDARD
ANY LENGTH BETWEEN DIMENSIONS CAN BE
REQUESTED.**

**NOTES:
ACCESS COVERS #AC16 (2 REQUIRED)
APPROX. WEIGHT: 4 LB. 5 OZ.
AVAILABLE WITH NO COVER OPENINGS.**

THIS DRAWING IS THE PROPERTY OF HAYES MFG. INC. AND IS LOANED SUBJECT TO THE CONDITION THAT IT SHALL NOT BE REPRODUCED, COPIED, LOANED OR OTHERWISE DISPOSED OF, DIRECTLY OR INDIRECTLY. IT SHALL BE USED AS A MEANS OF REFERENCE TO WORK FURNISHED BY THIS COMPANY ONLY AND IS NOT TO BE SUBMITTED TO OUTSIDE PARTIES FOR EXAMINATION WITHOUT OUR CONSENT.

SYMBOLS	DET.	PART NUMBER	DESCRIPTION	QTY.
<ul style="list-style-type: none"> — FLATNESS — STRAIGHTNESS — ANGULARITY — PERPENDICULARITY — PARALLELISM — CONCENTRICITY — TRUE POSITION — ROUNDNESS — CIRCULAR RUN OUT — TOTAL RUN OUT — CYLINDRICITY — FINISH 	DO NOT SCALE DRAWING			
	TOLERANCES UNLESS OTHERWISE SPECIFIED			TITLE
	125/ MAXIMUM		SMALL ENGINE HOUSING	
	ANGLE ±1/2° FRACTION ±1/32		MATERIAL	
	DECIMAL		ALUMINUM	
	.00 ±.01			
	.0000 ±.0005			
CLASS	MAKE: <input type="checkbox"/> BUY: <input type="checkbox"/>	DRAWN BY	DATE	DRAWING NO.
DESCRIPTION		SIETING	05-01-07	G-16-120-XXXX
		CHECKED BY	SCALE	SHEET OF REV.
		RJH		