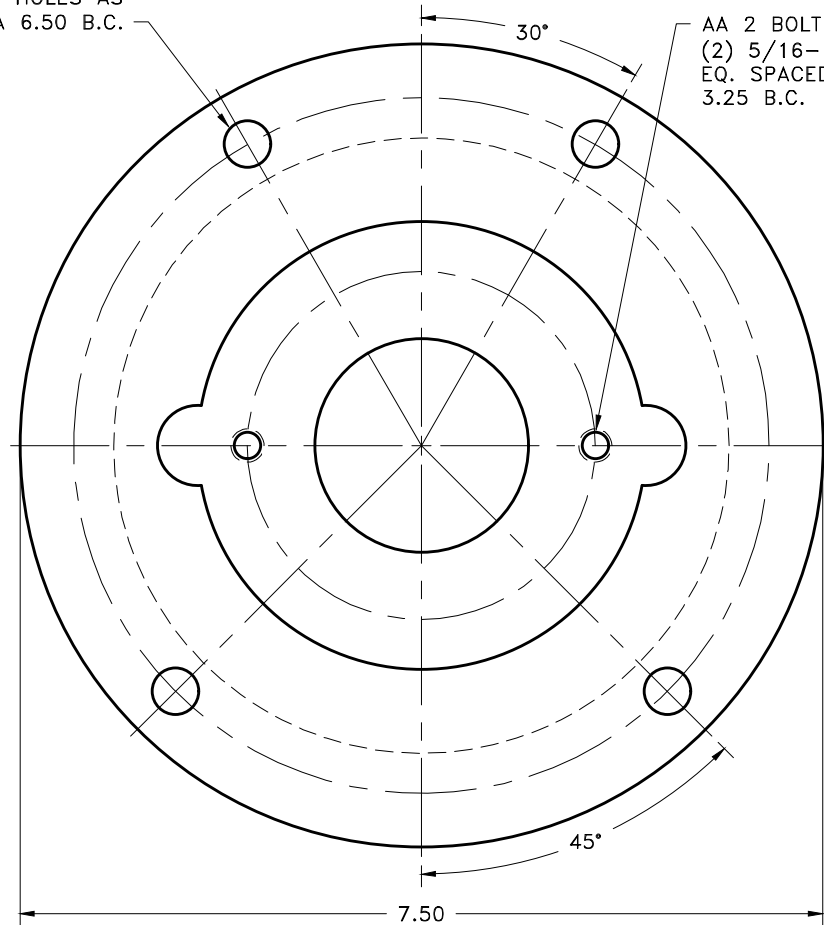
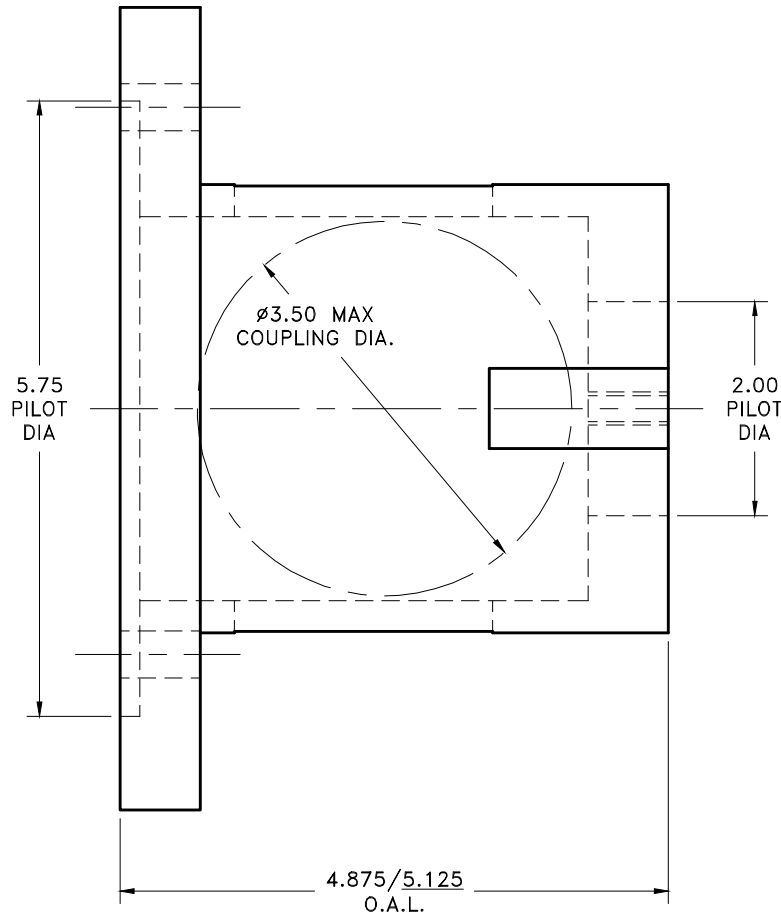


REV	DATE	CHANGE DESCRIPTION	MOD.BY	CK1	CK2

(4) 7/16 HOLES AS SHOWN ON A 6.50 B.C.

AA 2 BOLT MOUNT
(2) 5/16-18 HOLES
EQ. SPACED ON A
3.25 B.C.



**NOTE: UNDERLINED LENGTH DIM. IS STANDARD
ANY LENGTH BETWEEN DIMENSIONS CAN BE
REQUESTED.**

**NOTES:
ACCESS COVERS #AC100 (2 REQUIRED)
APPROX. WEIGHT: 2 LB. 2 OZ.
AVAILABLE WITH NO COVER OPENINGS**

THIS DRAWING IS THE PROPERTY OF HAYES MFG. INC. AND IS LOANED SUBJECT TO THE CONDITION THAT IT SHALL NOT BE REPRODUCED, COPIED, LOANED OR OTHERWISE DISPOSED OF, DIRECTLY OR INDIRECTLY. IT SHALL BE USED AS A MEANS OF REFERENCE TO WORK FURNISHED BY THIS COMPANY ONLY AND IS NOT TO BE SUBMITTED TO OUTSIDE PARTIES FOR EXAMINATION WITHOUT OUR CONSENT.

SYMBOLS		DET.	PART NUMBER	DESCRIPTION	QTY.
—	FLATNESS	DO NOT SCALE		HAYES MANUFACTURING INC. ®	
—	STRAIGHTNESS	DRAWING			TITLE
—	ANGULARITY	TOLERANCES UNLESS OTHERWISE SPECIFIED		MATERIAL	ALUMINUM
—	PERPENDICULARITY	ANGLE ±1/2°		CLASS	
—	PARALLELISM	FRACTION ±1/32		MAKE: <input type="checkbox"/> BUY: <input type="checkbox"/>	
—	CONCENTRICITY	DECIMAL		DRAWN BY	DATE
—	TRUE POSITION	.00 ±.01		SIETING	05-01-07
—	ROUNDNESS	.0000 ±.0005		CHECKED BY	SCALE
—	CIRCULAR RUN OUT			RJH	
—	TOTAL RUN OUT			DRAWING NO.	G-300-401-XXXX
—	CYLINDRICITY			SHEET	OF
—	FINISH			REV.	