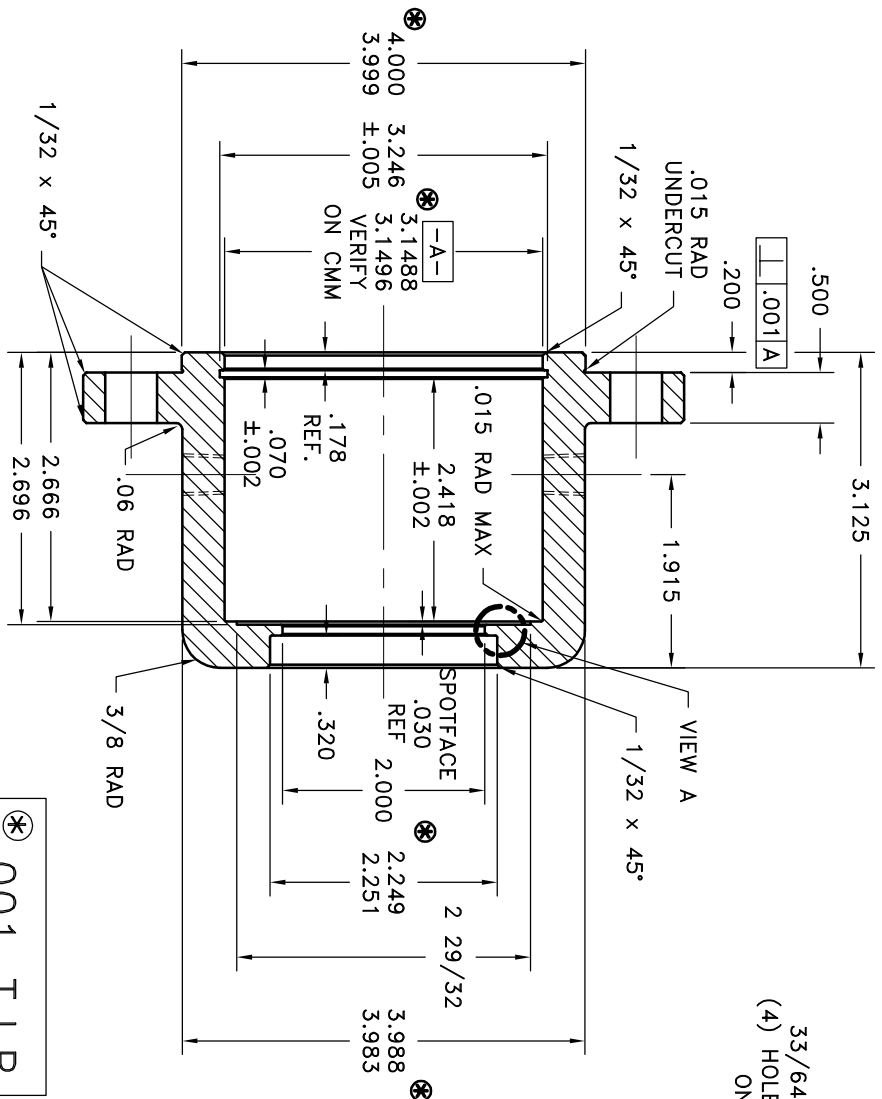


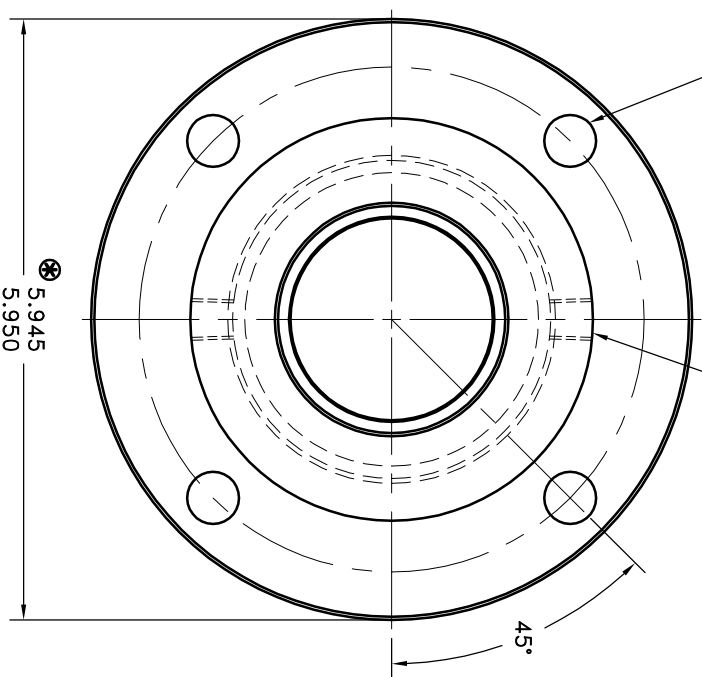
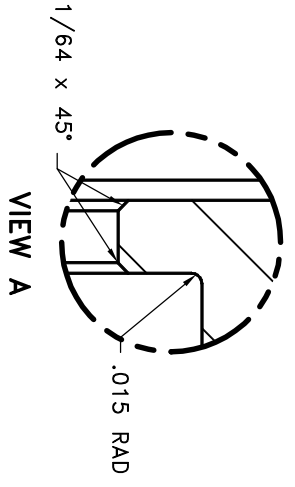
REV	DATE	CHANGE DESCRIPTION	MOD BY	CHK1	CHK2
A	05/17/2005	CHANGED A DATUM TOL	ZS	ML	RJH

33/64 DIA DR. THRU
(4) HOLES EQ. SPACED
ON A 5.000 B.C.

"R" .339 DIA DR. THRU
1/8-27 N.P.T.
(2) HOLES 180° APART



⊙ .001 T.I.R.



REPLACES BEARING HOUSING 124226

SYMBOLS		DEF.		PART NUMBER		DESCRIPTION		QTY.	
—	FINISH	DO NOT SCALE	DRAWING	DRAWN BY		DATE		DRAWING NO.	
—	STRANS	ANGULARITY	PARALLELISM	SHEETING		SCALE		125007	
—	SQUARENESS	TOLERANCES UNLESS OTHERWISE SPECIFIED	PERPENDICULARITY	CHECKED BY		SCALE		REV.	
—	PARALLELISM	ANGLE 1/32	FINISH	R/JH		SCALE		REV.	
—	TRUE POSITION	DECIMAL	DECIMAL	R/JH		SCALE		REV.	
—	ROUNDNESS	UNLESS OTHERWISE SPECIFIED	UNLESS OTHERWISE SPECIFIED	R/JH		SCALE		REV.	
—	CIRCULAR RUN OUT	BREAK ALL SHARP CORNERS .010 TO .020	BREAK ALL SHARP CORNERS .010 TO .020	R/JH		SCALE		REV.	
—	TOTAL RUN OUT	STAMP OR MARK DRAWING NO.	STAMP OR MARK DRAWING NO.	R/JH		SCALE		REV.	
—	CYLINDRICITY	6" DIA. 1141 OR 1144 OR 1144 OR 8620 H.R.S.	6" DIA. 1141 OR 1144 OR 1144 OR 8620 H.R.S.	R/JH		SCALE		REV.	
—	FINISH	TITLE		R/JH		SCALE		REV.	
—	—	BEARING HOUSING		R/JH		SCALE		REV.	
—	—	HAYES MANUFACTURING INC. ©		R/JH		SCALE		REV.	

THIS DRAWING IS THE PROPERTY OF HAYES MFG. INC. AND IS LOANED TO YOU FOR YOUR USE ONLY. IT IS NOT TO BE REPRODUCED, COPIED, LOANED OR OTHERWISE DISPOSED OF DIRECTLY OR INDIRECTLY. IT SHALL BE USED AS A MEANS OF REFERENCE TO WORK FURNISHED BY THIS COMPANY ONLY AND IS NOT TO BE SUBMITTED TO OUTSIDE PARTIES FOR EXAMINATION WITHOUT OUR CONSENT.