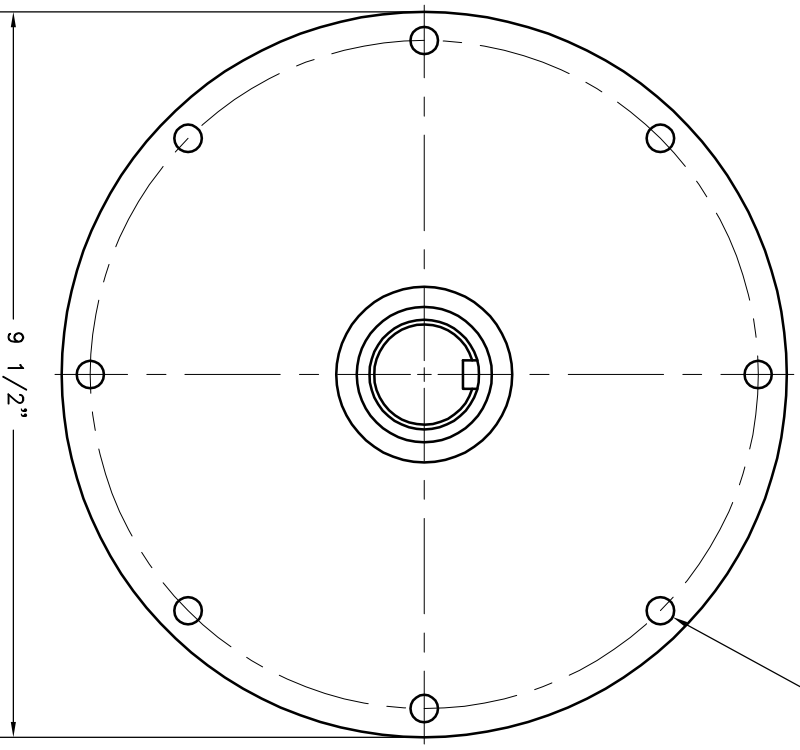
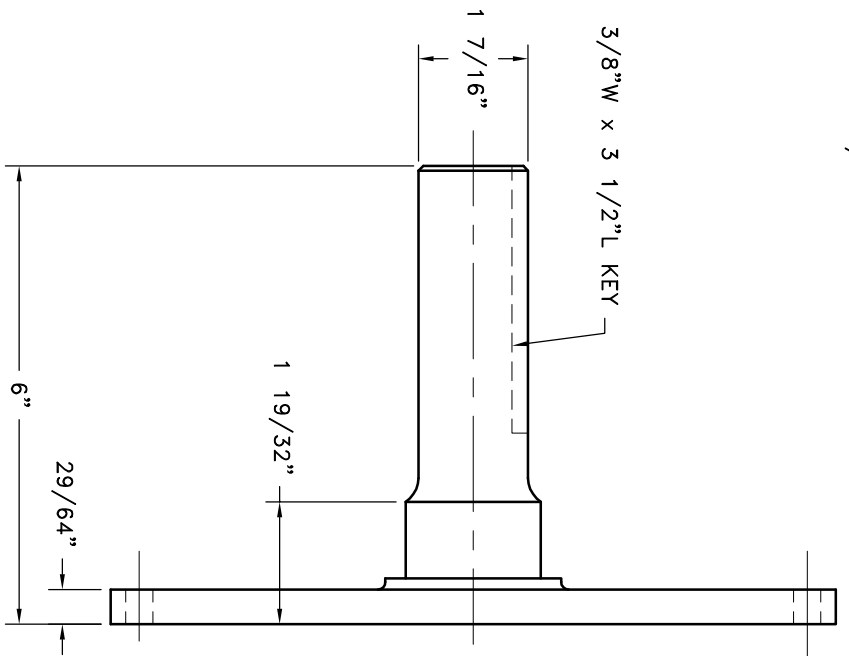


REV	DATE	CHANGE DESCRIPTION	MOD. BY	CHK1	CHK2



(8) 23/64 HOLES EQ. SPACED ON A 8 3/4" B.C.



S.A.E. 7 1/2 STUB SHAFT

SYMBOLS	DET.	PART NUMBER	DESCRIPTION	QTY.
STRAIGHTNESS ANGULARITY SQUARENESS CONCENTRICITY TRUE POSITION ROUNDNESS CIRCULAR RUN OUT TOTAL RUN OUT FINISH	DO NOT SCALE TOLERANCES UNLESS OTHERWISE SPECIFIED 1/32" MAXIMUM ANGLE 45/72 FRACTION ±1/32 DECIMAL .000 ±.005 .000 ±.010 .000 ±.005		HAYES MANUFACTURING INC. ®	
- UNLESS OTHERWISE SPECIFIED - BREAK ALL SHARP CORNERS .010 TO .020 STAMP OR MARK DRAWING NO.			TITLE S.A.E. 7 1/2 STUB SHAFT	
			DRAWN BY SLETTING CHECKED BY SCALE	
			DATE 06-22-06	
			DRAWING NO. 26-0AA52 SHEET OF REV.	

THIS DRAWING IS THE PROPERTY OF HAYES MFG. INC. AND IS LOANED TO YOU FOR THE PURPOSE OF MANUFACTURING THE PART SHOWN. IT SHALL BE USED AS A MEANS OF REFERENCE TO WORK FURNISHED BY HAYES MANUFACTURING INC. AND SHALL NOT BE REPRODUCED, COPIED, LOANED OR OTHERWISE DISPOSED OF, DIRECTLY OR INDIRECTLY, WITHOUT THE WRITTEN CONSENT OF HAYES MANUFACTURING INC. FOR EXAMINATION WITHOUT OUR CONSENT.