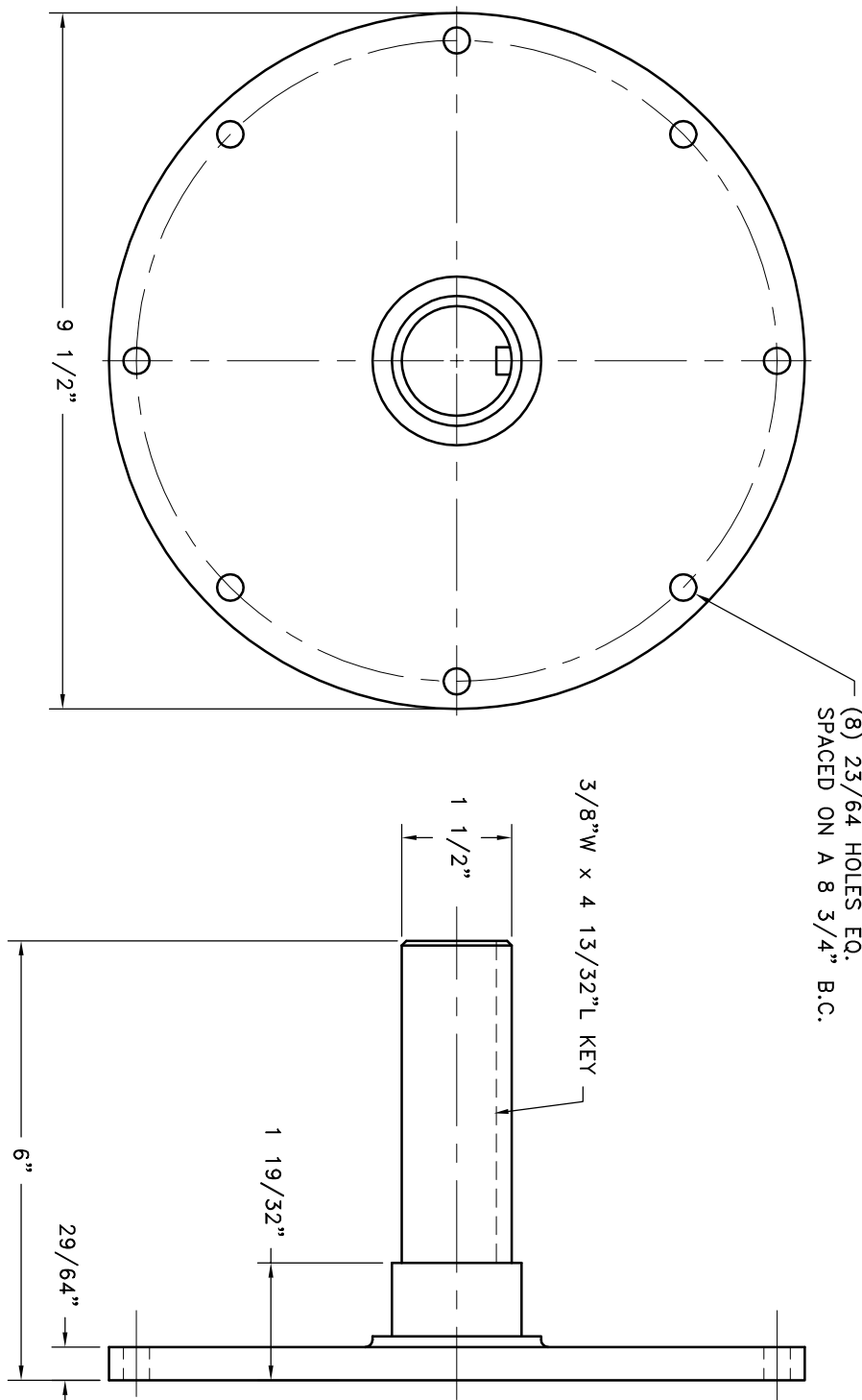


REV	DATE	CHANGE DESCRIPTION	MOD BY	CK1	CK2



(8) 23/64 HOLES EQ.  
SPACED ON A 8 3/4" B.C.

3/8"W x 4 13/32" L KEY

1 1/2"

1 19/32"

9 1/2"

6"

29/64"

S.A.E. 7 1/2 STUB SHAFT

SYMBOLS		DET.	PART NUMBER	DESCRIPTION	QTY.
	FLATNESS	DO NOT SCALE		<p>S.A.E. 7 1/2 STUB SHAFT</p>	
	FINISH	DRAWING			
	ANGULARITY	TOLERANCES UNLESS OTHERWISE SPECIFIED			
	PARALLELISM	MAXIMUM			
	CONCENTRICITY	ANGLE ±1/2°			
	ROUNDNESS	FRACTION ±1/32			
	CIRCULAR RUN OUT	0.004 ±0.01			
	TOTAL RUN OUT	0.008 ±0.015			
	CYLINDRICITY	0.000 ±0.0005			
	FINISH	UNLESS OTHERWISE SPECIFIED -			
	REMOVE FIRST THREAD	REMOVE FIRST THREAD			
	BREAK ALL SHARP CORNERS 0.10 TO 0.20	DATE	06-22-06		
	STAMP OR MARK DRAWING NO.	CHECKED BY	SCALE	DRAWING NO.	26-1A52
		DATE		SHEET	OF
		REV.			

THIS DRAWING IS THE PROPERTY OF HAYES MFG. INC. AND IS LOANED TO YOU FOR THE CONDITION THAT IT IS NOT TO BE REPRODUCED, COPIED, OR TRANSMITTED IN ANY FORM OR BY ANY MEANS, ELECTRONIC OR MECHANICAL, INCLUDING PHOTOCOPYING, RECORDING, OR BY ANY INFORMATION STORAGE AND RETRIEVAL SYSTEM. IT SHALL BE USED AS A MEANS OF REFERENCE TO WORK FURNISHED BY THIS COMPANY ONLY AND IS NOT TO BE SUBMITTED TO OUTSIDE PARTIES FOR EXAMINATION WITHOUT OUR CONSENT.