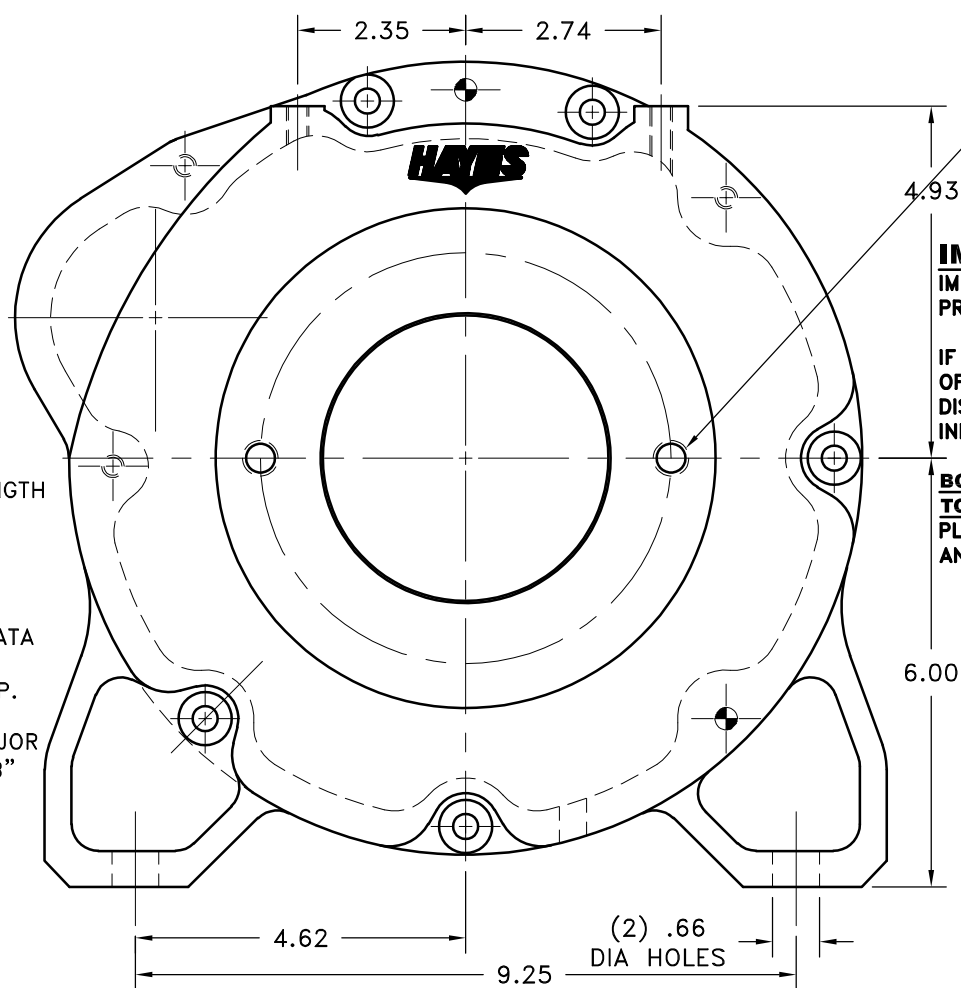
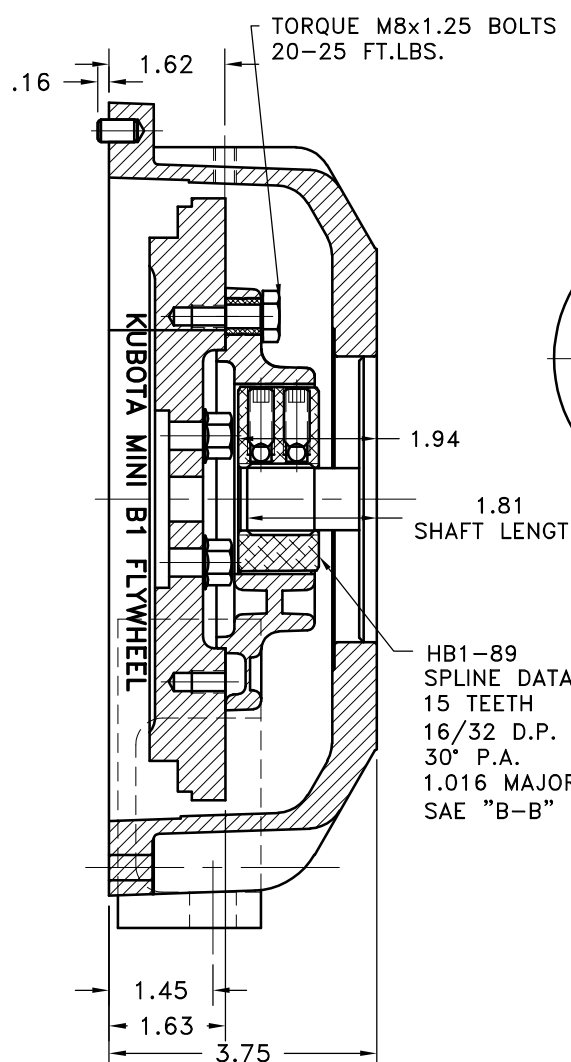


REV	DATE	CHANGE DESCRIPTION	MOD.BY	CK1	CK2



SAE "B" 2-BOLT MOUNT
4.00 DIA PUMP PILOT
(2) 1/2-13 TAPPED HOLES
EQ. SPACED ON 5.75 B.C.

IMPORTANT INSTALLATION NOTE!!!!
IMPROPER INSTALLATION OF HUB COULD CAUSE
PREMATURE WEAR AND OR FAILURE.

IF YOU HAVE QUESTIONS CONCERNING LOCATION
OF METAL HUB ON PUMP SHAFT PLEASE CONTACT
DISTRIBUTOR OR FACTORY FOR FURTHER
INFORMATION

**BOTH HUB SET SCREWS MUST BE PROPERLY
TORQUED TO 25 FT.LBS. USING TORQUE WRENCH.**
PLEASE CONTACT DISTRIBUTOR OR FACTORY FOR
ANY FURTHER QUESTIONS.

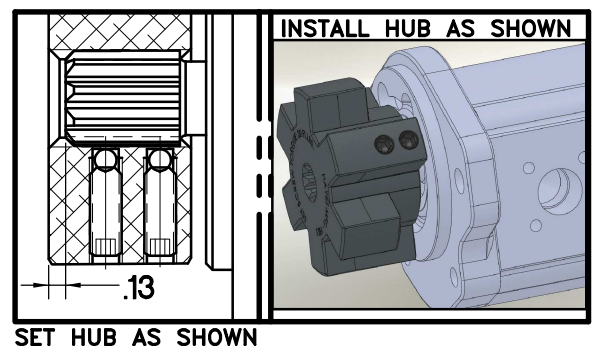
NOTES:

- HOUSING FOR KUBOTA ENGINES
Z442-B, Z482-B, D662-B,
D722-B, WG600-B, G750-B
- ASS'Y WORKS WITH
FLYWHEELS: C-1(16851-25118)
& C-2(16861-25112)
- STARTER PLATE:
E-2(19666-04621)

**NOTE: THIS STEP IS IMPORTANT TO
ENSURE FULL SPLINE ENGAGEMENT.**

- PRESET HUB ON SHAFT AS SHOWN.
- IF YOUR PUMP SHAFT VARIES FROM THE DRAWN
SHAFT LENGTH, CONTACT FACTORY FOR
RECOMMENDATIONS.
- TORQUE BOTH SET SCREWS TO 25 FT.LBS. USING
TORQUE WRENCH.**
- SHAFT SHOULD HAVE FULL SPLINE ENGAGEMENT INTO
HUB, IF NOT CONTACT FACTORY FOR
RECOMMENDATIONS (231) 879-3372.

THIS DRAWING IS THE PROPERTY OF HAYES MFG. INC. AND IS LOANED
SUBJECT TO THE CONDITION THAT IT SHALL NOT BE REPRODUCED,
COPIED, LOANED OR OTHERWISE DISPOSED OF, DIRECTLY OR INDIRECTLY.
IT SHALL BE USED AS A MEANS OF REFERENCE TO WORK FURNISHED BY
THIS COMPANY ONLY AND IS NOT TO BE SUBMITTED TO OUTSIDE PARTIES
FOR EXAMINATION WITHOUT OUR CONSENT.



5	930114-02	HOUSING	1
4	930112	BOLT KIT	1
3	SD200X5/16X1/2	5/16 x 1/2 SPRING DOWEL	2
2	HB1-89	HEX~FLX HUB	1
1	B-SMN	HEX~FLX FLYWHEEL PLATE	1

SYMBOLS		DET.	PART NUMBER	DESCRIPTION	QTY.
	FLATNESS	DO NOT SCALE			
	STRAIGHTNESS	DRAWING			
	ANGULARITY	TOLERANCES UNLESS			
	PERPENDICULARITY	OTHERWISE SPECIFIED			
	PARALLELISM	125 MAXIMUM			
	CONCENTRICITY	ANGLE ±1/2°			
	TRUE POSITION	FRACTION ±1/32			
	ROUNDNESS	DECIMAL			
	CIRCULAR RUN OUT	.00 ±.01			
	TOTAL RUN OUT	.00 ±.005			
	CYLINDRICITY	.0000 ±.0005			
	FINISH				
CLASS		MAKE: <input checked="" type="checkbox"/> BUY: <input type="checkbox"/>		DRAWN BY	
KUBOTA				LAWSON	
DESCRIPTION		KBMNFT,15T16/32,B2		DATE	
				02/24/2015	
				DRAWING NO.	
				001-0-HB1-89-B2	
				SHEET OF REV.	
				1 OF 1	



TITLE
KUBOTA MINI PUMP DRIVE KIT

MATERIAL

DRAWN BY
LAWSON

DATE
02/24/2015

DRAWING NO.
001-0-HB1-89-B2

CHECKED BY
SCALE

SHEET OF REV.
1 OF 1