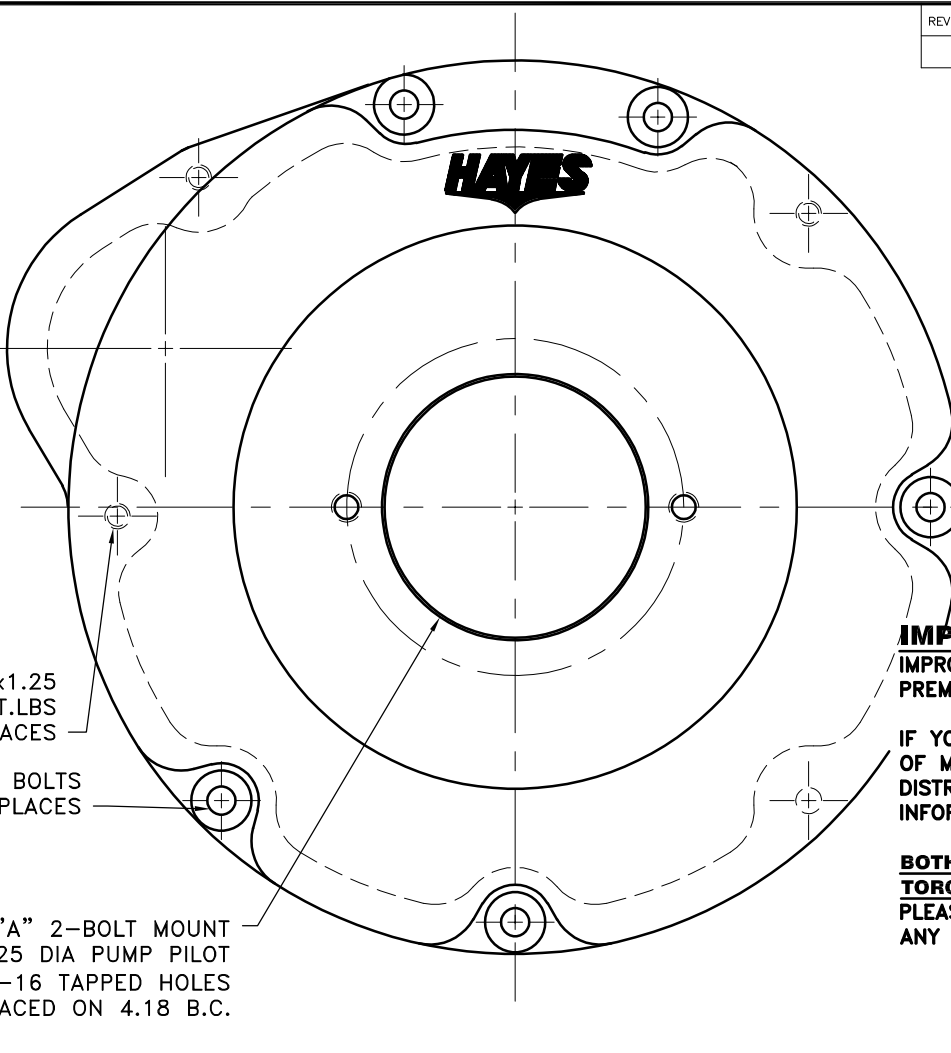
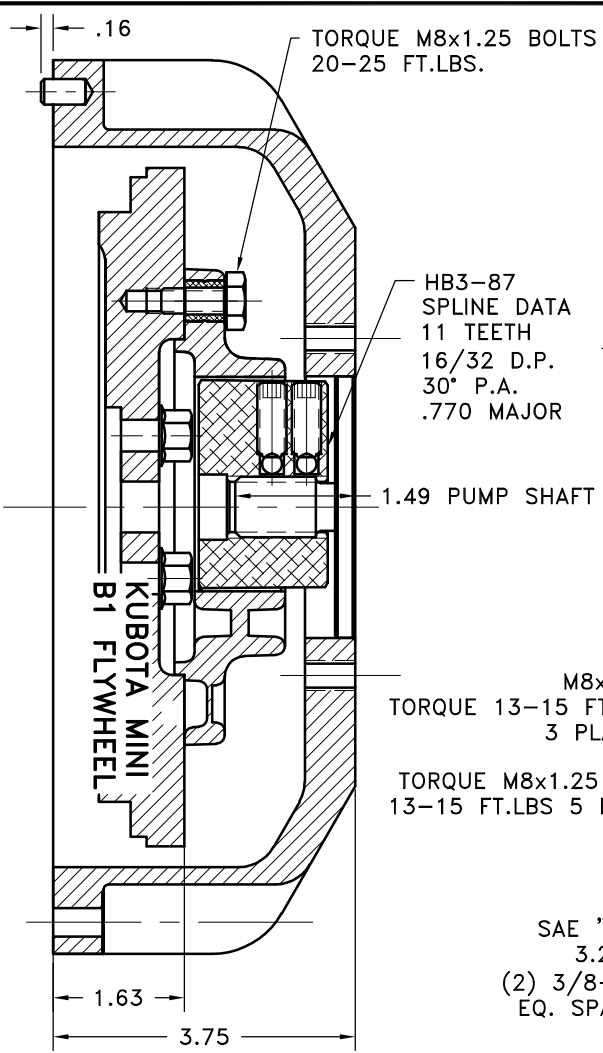


REV	DATE	CHANGE DESCRIPTION	MOD. BY	CK1	CK2



NOTES:

- HOUSING FOR KUBOTA ENGINES Z442-B, Z482-B, D662-B, D722-B, WG600-B, G750-B
 ASS'Y WORKS WITH FLYWHEELS: C-1(16851-25118) & C-2(16861-25112)
 STARTER PLATE: E-2(19666-04621)

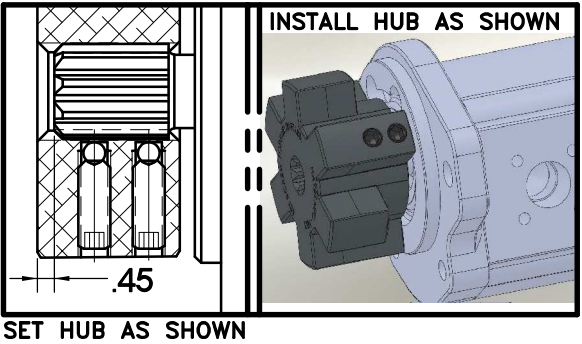
IMPORTANT INSTALLATION NOTE!!!!
 IMPROPER INSTALLATION OF HUB COULD CAUSE PREMATURE WEAR AND OR FAILURE.

IF YOU HAVE QUESTIONS CONCERNING LOCATION OF METAL HUB ON PUMP SHAFT PLEASE CONTACT DISTRIBUTOR OR FACTORY FOR FURTHER INFORMATION

BOTH HUB SET SCREWS MUST BE PROPERLY TORQUED TO 25 FT.LBS. USING TORQUE WRENCH.
 PLEASE CONTACT DISTRIBUTOR OR FACTORY FOR ANY FURTHER QUESTIONS.

NOTE: THIS STEP IS IMPORTANT TO ENSURE FULL SPLINE ENGAGEMENT.

- PRESET HUB ON SHAFT AS SHOWN.
- IF YOUR PUMP SHAFT VARIES FROM THE DRAWN SHAFT LENGTH, CONTACT FACTORY FOR RECOMMENDATIONS.
- TORQUE BOTH SET SCREWS TO 25 FT.LBS. USING TORQUE WRENCH.**
- SHAFT SHOULD HAVE FULL SPLINE ENGAGEMENT INTO HUB, IF NOT CONTACT FACTORY FOR RECOMMENDATIONS (231) 879-3372.



REV	DATE	CHANGE DESCRIPTION	MOD. BY	CK1	CK2
5	930100-01	HOUSING			1
4	930112	BOLT KIT			1
3	SD200X5/16X1/2	5/16 X 1/2 SPRING DOWEL			2
2	HB3-87	HEX~FLX HUB			1
1	B-SMN	HEX~FLX FLYWHEEL PLATE			1

SYMBOLS		DET.	PART NUMBER	DESCRIPTION	QTY.
	FLATNESS	DO NOT SCALE			
	STRAIGHTNESS	DRAWING			
	ANGULARITY	TOLERANCES UNLESS OTHERWISE SPECIFIED			
	PERPENDICULARITY	125 MAXIMUM			
	PARALLELISM	ANGLE ±1/2°			
	CONCENTRICITY	FRACTION ±1/32			
	TRUE POSITION	DECIMAL			
	ROUNDNESS	.00 ±.01			
	CIRCULAR RUN OUT	.000 ±.005			
	TOTAL RUN OUT	.0000 ±.0005			
	CYLINDRICITY				
	FINISH				

CLASS	KUBOTA	MAKE: <input checked="" type="checkbox"/> BUY: <input type="checkbox"/>	DRAWN BY	DATE	DRAWING NO.
DESCRIPTION	KBMN,11T16/32,A2,		SIETING	09-11-08	002-0-HB3-87-A2
			CHECKED BY	SCALE	SHEET OF REV.



TITLE: KUBOTA MINI HEX-FLX COUPLING ASS'Y

THIS DRAWING IS THE PROPERTY OF HAYES MFG. INC. AND IS LOANED SUBJECT TO THE CONDITION THAT IT SHALL NOT BE REPRODUCED, COPIED, LOANED OR OTHERWISE DISPOSED OF, DIRECTLY OR INDIRECTLY. IT SHALL BE USED AS A MEANS OF REFERENCE TO WORK FURNISHED BY THIS COMPANY ONLY AND IS NOT TO BE SUBMITTED TO OUTSIDE PARTIES FOR EXAMINATION WITHOUT OUR CONSENT.