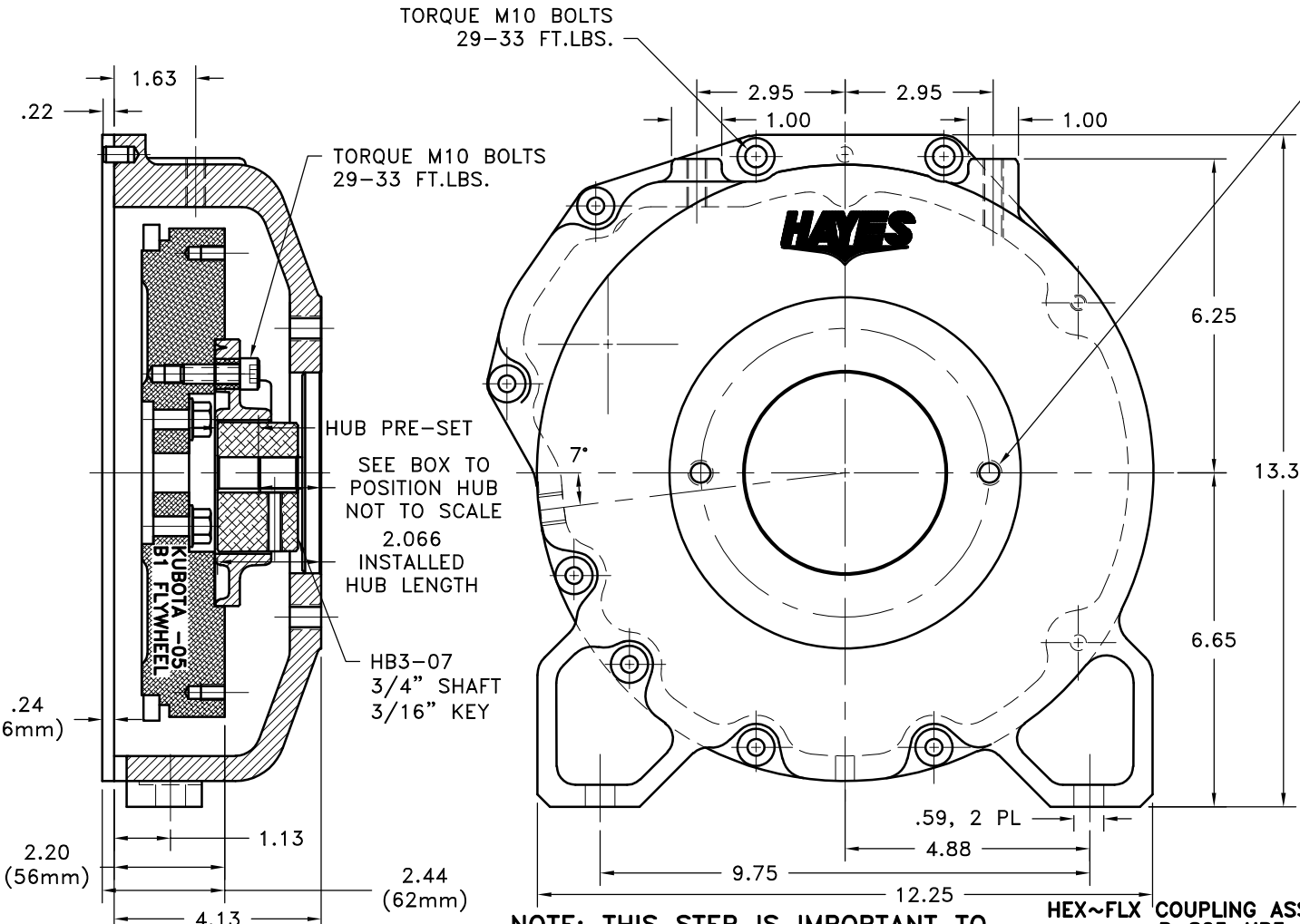


REV	DATE	CHANGE DESCRIPTION	MOD. BY	CK1	CK2



S.A.E. B 2-BOLT MOUNT
4.00 PILOT
(2) 1/2-13 TAPPED HOLES
EQ. SPACED ON A 5.75 B.C.
(HOUSING TAPPED FOR SENSOR)

NOTES:
1. HOUSING FOR KUBOTA ENGINES
D-905, D1005-B, D1105-B, V1205-B,
V1305-P, AND V1505-B.

IMPORTANT INSTALLATION NOTE!!!!
**IMPROPER INSTALLATION OF HUB COULD CAUSE
PREMATURE WEAR AND OR FAILURE.**

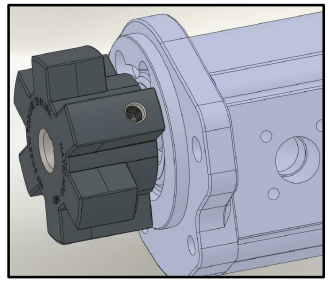
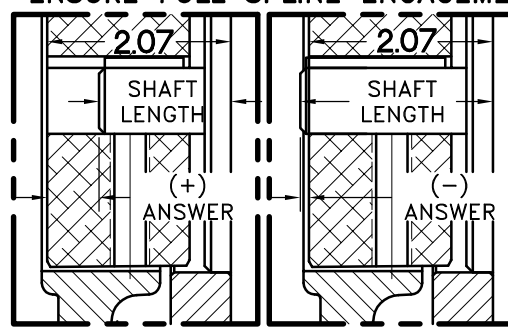
**IF YOU HAVE QUESTIONS CONCERNING LOCATION
OF METAL HUB ON PUMP SHAFT PLEASE CONTACT
DISTRIBUTOR OR FACTORY FOR FURTHER
INFORMATION**

**BOTH HUB SET SCREWS MUST BE PROPERLY
TORQUED TO 25 FT.LBS. USING TORQUE WRENCH.
PLEASE CONTACT DISTRIBUTOR OR FACTORY FOR
ANY FURTHER QUESTIONS.**

**NOTE: THIS STEP IS IMPORTANT TO
ENSURE FULL SPLINE ENGAGEMENT.**

NOTE: REMOVE HUB FROM ASS'Y, PRESET HUB ON SHAFT
& REASSEMBLE USING NUT & BOLT GRADE LOC-TITE ON
SET SCREWS. SHAFT SHOULD HAVE A MINIMUM OF 3/4"
OF ENGAGEMENT IF NOT CONTACT FACTORY FOR
RECOMMENDATIONS. TO GET HUB PRESET USE THIS
EQUATION:

EXAMPLE:
2.07 SHAFT LENGTH = HUB PRESET
IF YOUR ANSWER IS (+) SHAFT IS INSIDE OF HUB,
IF YOUR ANSWER IS (-) SHAFT STICKS OUT OF HUB.
(SEE BOXES)



5	952182	BOLT KIT	1
4	SD200X5/16X1/2	5/16 X 1/2 SPRING DOWEL	2
3	952088-04	HOUSING	1
2	HB3-07	HEX~FLX HUB	1
1	B-S05	HEX~FLX DRIVE PLATE	1

SYMBOLS		DET.	PART NUMBER	DESCRIPTION	QTY.
	FLATNESS	DO NOT SCALE			
	STRAIGHTNESS	DRAWING			
	ANGULARITY	TOLERANCES UNLESS OTHERWISE SPECIFIED			
	PERPENDICULARITY	125 MAXIMUM			
	PARALLELISM	ANGLE ±1/2°			
	CONCENTRICITY	FRACTION ±1/32			
	TRUE POSITION	DECIMAL			
	CIRCULAR RUN OUT	.00 ±.01			
	TOTAL RUN OUT	.00 ±.005			
	CYLINDRICITY	.0000 ±.0005			
	FINISH				
CLASS	KUBOTA	MAKE: <input checked="" type="checkbox"/>	BUY: <input type="checkbox"/>		
DESCRIPTION	KB05FTS,3/4X3/16,B2		DRAWN BY	DATE	DRAWING NO.
			LAWSON	3-15-2015	005-S-HB3-07-B2
			CHECKED BY	SCALE	SHEET OF REV.
					1 OF 1



TITLE
KUBOTA -05 HEX~FLX ASS'Y