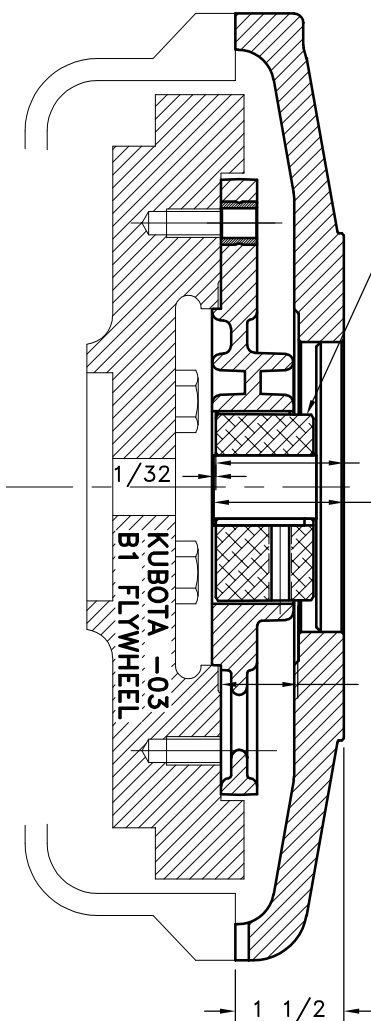


REV	DATE	CHANGE DESCRIPTION	MOD.BY	CK1	CK2
A	01/11/2017	CHANGED BOLT KIT	BSL	JM	ML



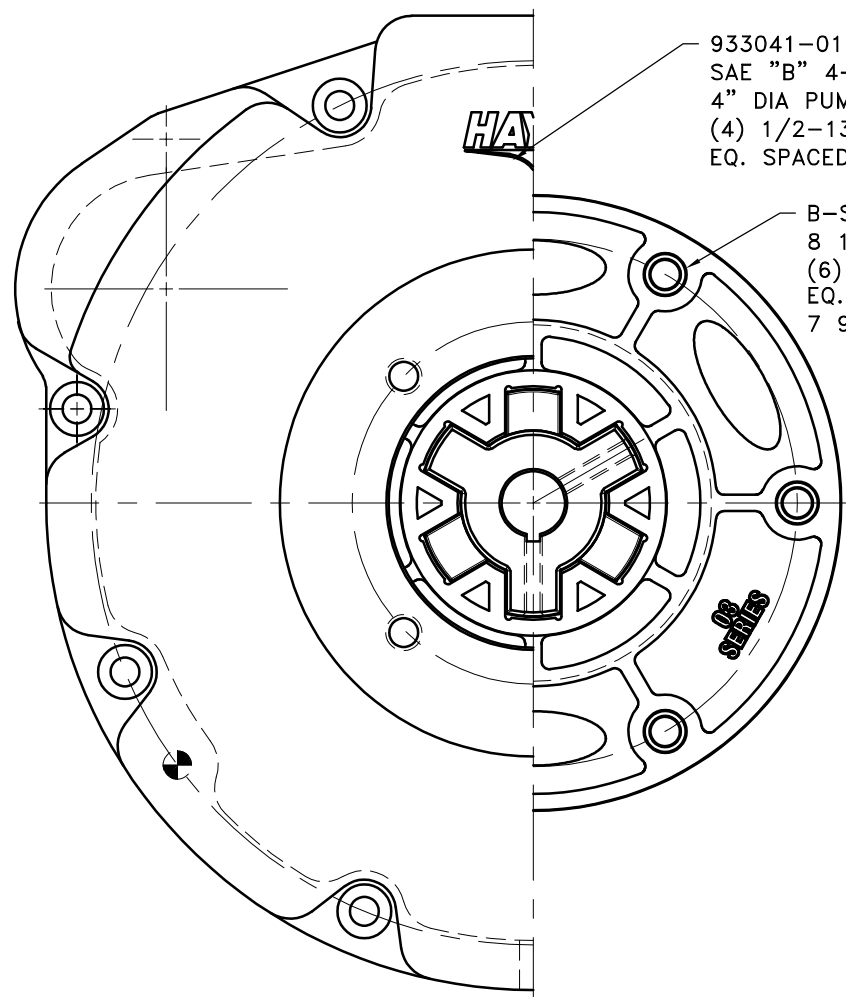
HB2-09  
7/8" SHAFT  
3/16" KEY

1 49/64  
PUMP SHAFT  
LENGTH

KUBOTA -03  
B1 FLYWHEEL

1 1/16

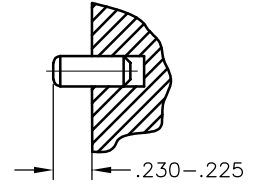
1 1/2



933041-01  
SAE "B" 4-BOLT MOUNT  
4" DIA PUMP PILOT  
(4) 1/2-13 TAPPED HOLES  
EQ. SPACED ON 5 3/4 B.C.

B-S03  
8 1/2 DIA  
(6) 13/32 HOLES  
EQ. SPACED ON  
7 9/32 B.C.

NOTE: INSTALL 2 DOWEL PINS



**IMPORTANT INSTALLATION NOTE!!!!**  
IMPROPER INSTALLATION OF HUB COULD CAUSE  
PREMATURE WEAR AND OR FAILURE.

IF YOU HAVE QUESTIONS CONCERNING LOCATION  
OF METAL HUB ON PUMP SHAFT PLEASE CONTACT  
DISTRIBUTOR OR FACTORY FOR FURTHER  
INFORMATION

**BOTH HUB SET SCREWS MUST BE PROPERLY  
TORQUED TO 25 FT.LBS. USING TORQUE WRENCH.**  
PLEASE CONTACT DISTRIBUTOR OR FACTORY FOR  
ANY FURTHER QUESTIONS.

NOTE:

- HOUSING FOR KUBOTA ENGINES D1403-B,  
D1703-B, V1903-B, AND V2203-B.

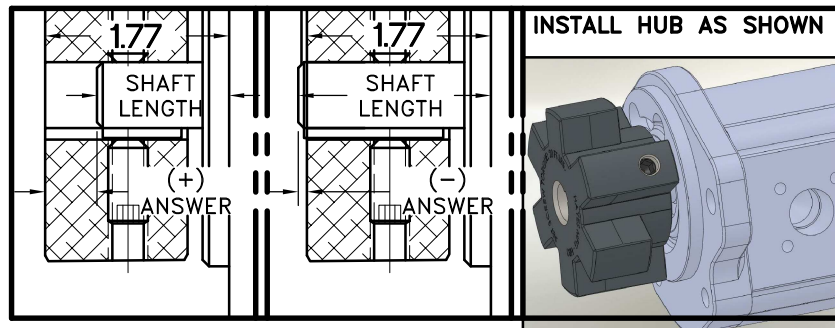
**ASS'Y WORKS WITH  
FLYWHEELS: C-1(16414-25111) &  
C-4(19629-25113)  
HOUSINGS: D-9(19004-04611) &  
D-8(19077-04611)**

NOTE: REMOVE HUB FROM ASS'Y, PRESET HUB ON SHAFT  
AS SHOWN. **TORQUE BOTH SET SCREWS TO 25 FT.LBS.  
USING TORQUE WRENCH.** SHAFT SHOULD HAVE A  
MINIMUM OF 3/4" OF ENGAGEMENT IF NOT CONTACT  
FACTORY FOR RECOMMENDATIONS (231) 879-3372 TO  
GET HUB PRESET USE THIS EQUATION:

**PERFORM CALCULATION BELOW:**  
**1.77 - SHAFT LENGTH - HUB PRESET**

IF YOUR ANSWER IS (+) SHAFT IS INSIDE OF HUB, IF  
YOUR ANSWER IS (-) SHAFT STICKS OUT OF HUB.  
(SEE BOXES)

**NOTE: THIS STEP IS IMPORTANT TO  
ENSURE FULL SHAFT ENGAGEMENT.**



QTY.	DESCRIPTION	PART NUMBER	DET.
1	BOLT KIT (PRE-ASSEMBLED)	933504	5
2	M10 X 20 SPRING DOWEL	SD200X10X20	4
1	HOUSING	933041-01	3
1	HEX-FLX DRIVE HUB	HB2-09	2
1	HEX-FLX DRIVE PLATE	B-S03	1

SYMBOLS		DET.		PART NUMBER		DESCRIPTION		QTY.	
	FLATNESS		DO NOT SCALE DRAWING						
	STRAIGHTNESS	TOLERANCES UNLESS OTHERWISE SPECIFIED							
	ANGULARITY								
	PERPENDICULARITY								
	PARALLELISM								
	CONCENTRICITY		MAXIMUM						
	TRUE POSITION		ANGLE ±1/2°						
	CIRCULAR RUN OUT		FRACTION ±1/32						
	TOTAL RUN OUT		DECIMAL						
	CYLINDRICITY		.00 ±.01						
	FINISH		.000 ±.005						
	.0000 ±.0005								
CLASS		MAKE: <input checked="" type="checkbox"/> BUY: <input type="checkbox"/>		DRAWN BY		DATE		DRAWING NO.	
KUBOTA				BSL		09-24-2015		008-0-HB2-09-B4	
DESCRIPTION		KBO3,7/8x3/16,B4		CHECKED BY		SCALE		SHEET OF REV.	



TITLE  
**KUBOTA 03 HEX-FLX KIT**

MATERIAL