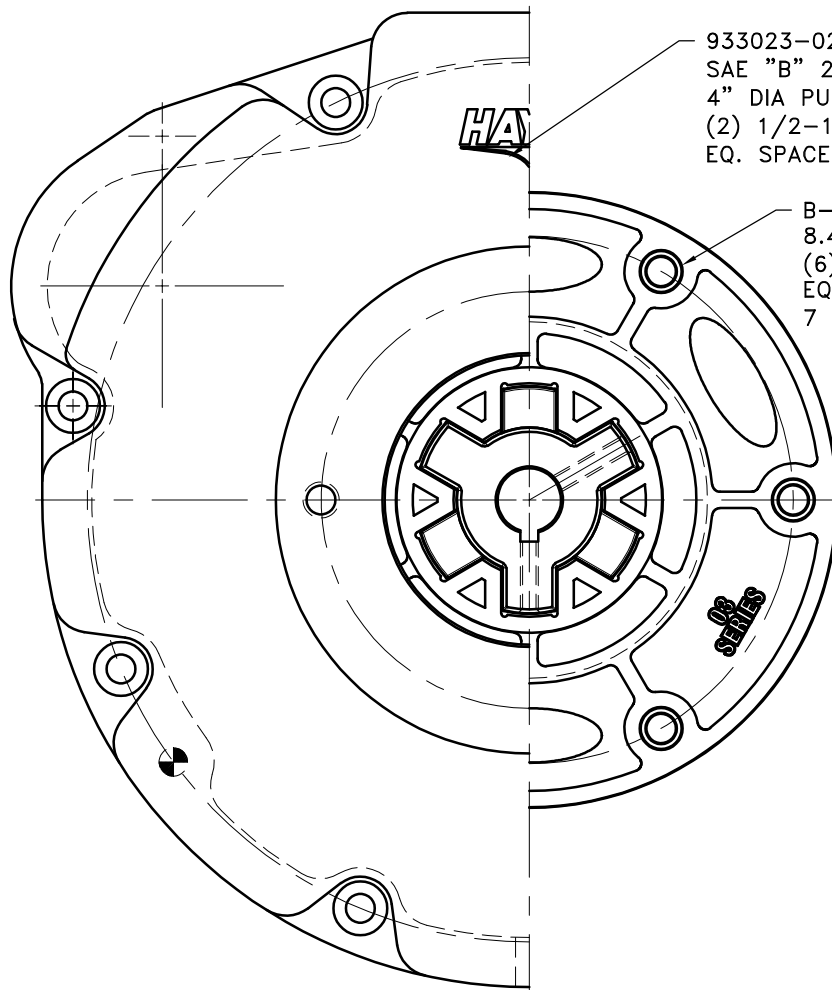
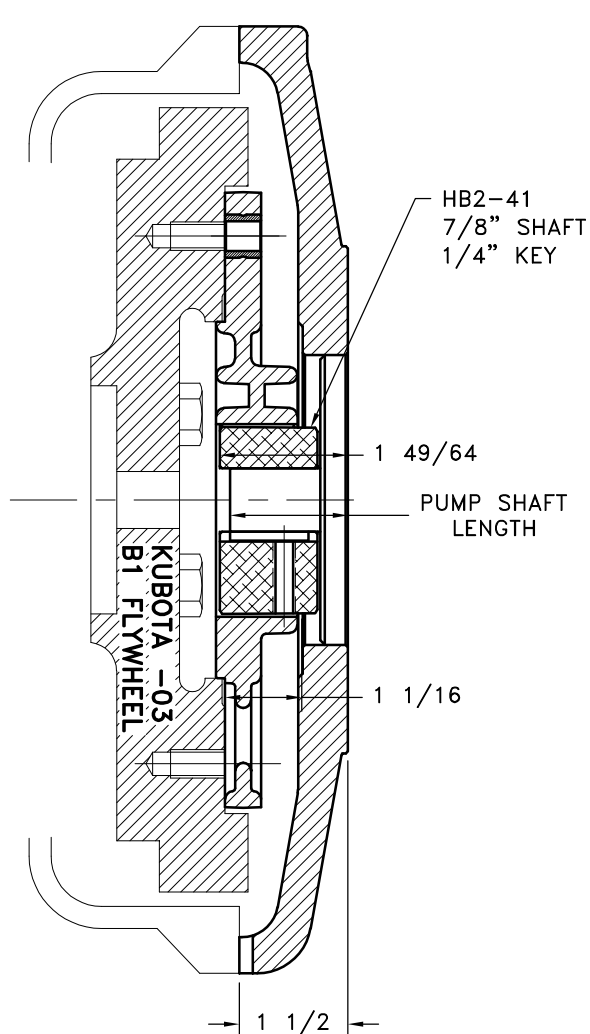
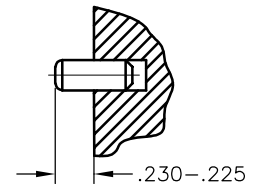


REV	DATE	CHANGE DESCRIPTION	MOD.BY	CK1	CK2
A	01/11/2017	CHANGED BOLT KIT	BSL	JM	ML



NOTE: INSTALL 2 DOWEL PINS



**IMPORTANT INSTALLATION NOTE!!!!**  
IMPROPER INSTALLATION OF HUB COULD CAUSE  
PREMATURE WEAR AND OR FAILURE.

IF YOU HAVE QUESTIONS CONCERNING LOCATION  
OF METAL HUB ON PUMP SHAFT PLEASE CONTACT  
DISTRIBUTOR OR FACTORY FOR FURTHER  
INFORMATION

**BOTH HUB SET SCREWS MUST BE PROPERLY  
TORQUED TO 25 FT.LBS. USING TORQUE WRENCH.**  
PLEASE CONTACT DISTRIBUTOR OR FACTORY FOR  
ANY FURTHER QUESTIONS.

NOTE:

1. HOUSING FOR KUBOTA ENGINES D1403-B,  
D1703-B, V1903-B, AND V2203-B.

**ASS'Y WORKS WITH**  
**FLYWHEELS: C-1(16414-25111) &**  
**C-4(19629-25113)**  
**HOUSINGS: D-9(19004-04611) &**  
**D-8(19077-04611)**

NOTE: REMOVE HUB FROM ASS'Y, PRESET HUB ON SHAFT  
AS SHOWN. **TORQUE BOTH SET SCREWS TO 25 FT.LBS.**  
**USING TORQUE WRENCH.** SHAFT SHOULD HAVE A  
MINIMUM OF 3/4" OF ENGAGEMENT IF NOT CONTACT  
FACTORY FOR RECOMMENDATIONS (231) 879-3372 TO  
GET HUB PRESET USE THIS EQUATION:

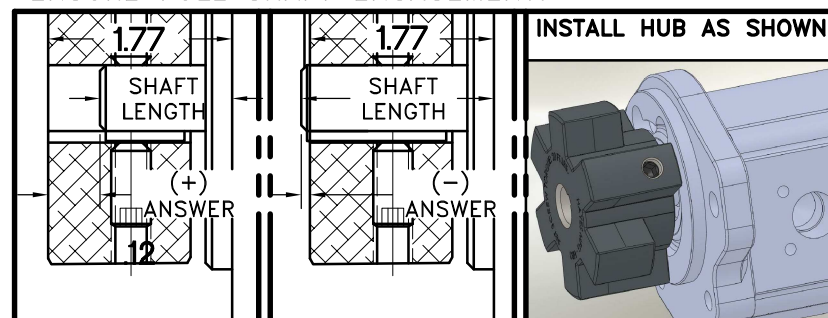
**PERFORM CALCULATION BELOW:**

**1.77 - SHAFT LENGTH - HUB PRESET**

IF YOUR ANSWER IS (+) SHAFT IS INSIDE OF HUB, IF  
YOUR ANSWER IS (-) SHAFT STICKS OUT OF HUB.  
(SEE BOXES)

THIS DRAWING IS THE PROPERTY OF HAYES MFG. INC. AND IS LOANED  
SUBJECT TO THE CONDITION THAT IT SHALL NOT BE REPRODUCED,  
COPIED, LOANED OR OTHERWISE DISPOSED OF, DIRECTLY OR INDIRECTLY.  
IT SHALL BE USED AS A MEANS OF REFERENCE TO WORK FURNISHED BY  
THIS COMPANY ONLY AND IS NOT TO BE SUBMITTED TO OUTSIDE PARTIES  
FOR EXAMINATION WITHOUT OUR CONSENT.

**NOTE: THIS STEP IS IMPORTANT TO  
ENSURE FULL SHAFT ENGAGEMENT.**



5	933504	BOLT KIT (PRE-ASSEMBLED)	1
4	SD200X10X20	M10 X 20 SPRING DOWEL	2
3	933023-02	HOUSING	1
2	HB2-41	HEX-FLX DRIVE HUB	1
1	B-S03	HEX-FLX DRIVE PLATE	1

SYMBOLS	DET.	PART NUMBER	DESCRIPTION	QTY.
FLATNESS STRAIGHTNESS ANGULARITY PERPENDICULARITY PARALLELISM CONCENTRICITY TRUE POSITION ROUNDNESS CIRCULAR RUN OUT TOTAL RUN OUT CYLINDRICITY FINISH	DO NOT SCALE DRAWING TOLERANCES UNLESS OTHERWISE SPECIFIED .125" MAXIMUM ANGLE ±1/2" FRACTION ±1/32 DECIMAL .00 ±.01 .000 ±.005 .0000 ±.0005	MAKE: <input checked="" type="checkbox"/> BUY: <input type="checkbox"/>	<b>HAYES</b> MANUFACTURING INC. ® TITLE KUBOTA 03 HEX-FLX KIT MATERIAL	
CLASS KUBOTA DESCRIPTION KB03,7/8x1/4,B2	DRAWN BY SIETING CHECKED BY RJH	DATE 03-28-2014 SCALE	DRAWING NO. 008-0-HB2-41-B2 SHEET OF REV.	