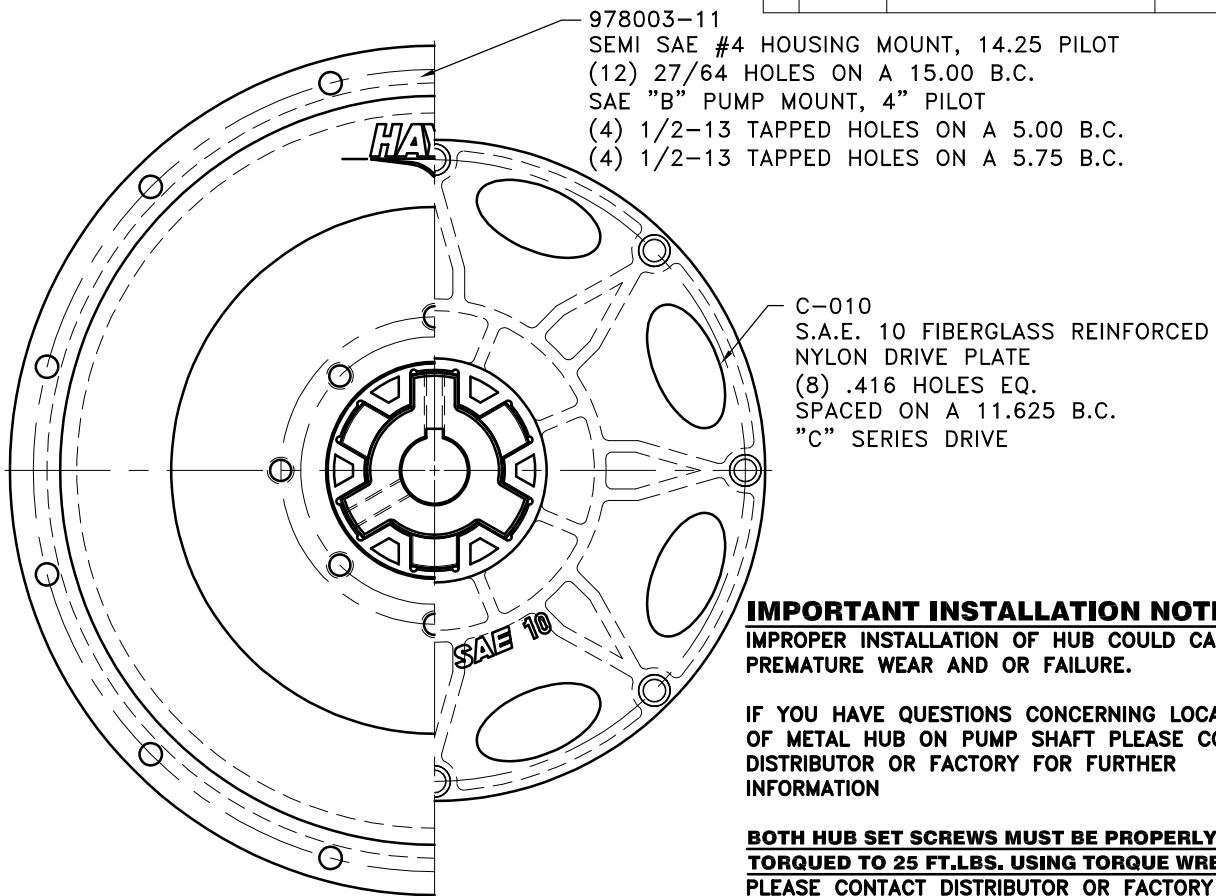
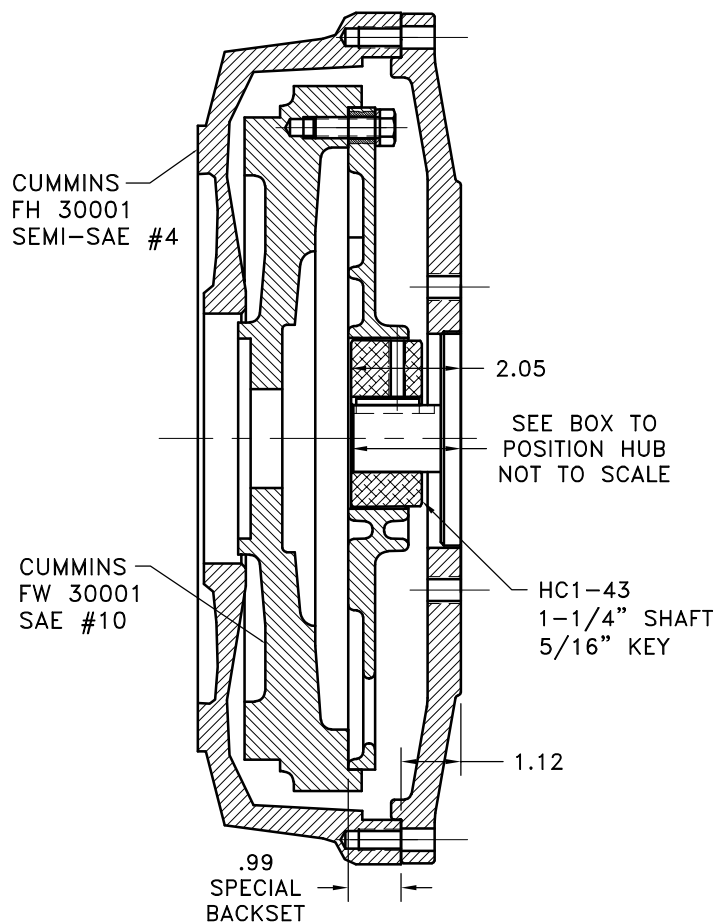


REV	DATE	CHANGE DESCRIPTION	MOD.BY	CK1	CK2



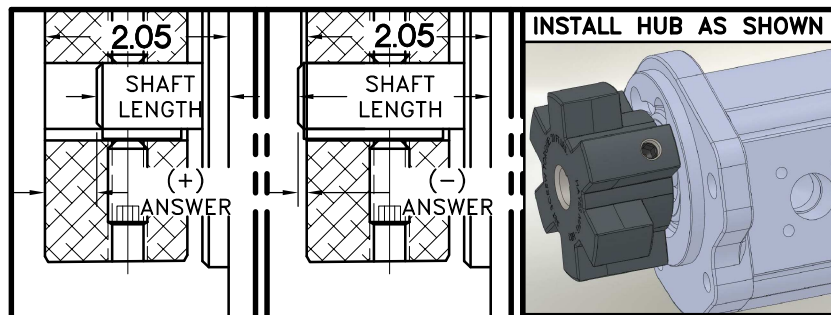
NOTE: REMOVE HUB FROM ASS'Y, PRESET HUB ON SHAFT AS SHOWN. **TORQUE BOTH SET SCREWS TO 25 FT.LBS. USING TORQUE WRENCH.** SHAFT SHOULD HAVE A MINIMUM OF 3/4" OF ENGAGEMENT IF NOT CONTACT FACTORY FOR RECOMMENDATIONS (231) 879-3372 TO GET HUB PRESET USE THIS EQUATION:

PERFORM CALCULATION BELOW:

2.05 - SHAFT LENGTH - HUB PRESET

IF YOUR ANSWER IS (+) SHAFT IS INSIDE OF HUB, IF YOUR ANSWER IS (-) SHAFT STICKS OUT OF HUB. (SEE BOXES)

NOTE: THIS STEP IS IMPORTANT TO ENSURE FULL SHAFT ENGAGEMENT.



4	977645	BOLT KIT	1
3	978003-11	SAE 4 HOUSING	1
2	HC1-43	HEX~FLX HUB	1
1	C-010	HEX~FLX DRIVE PLATE	1

DET.	PART NUMBER	DESCRIPTION	QTY.
4	977645	BOLT KIT	1
3	978003-11	SAE 4 HOUSING	1
2	HC1-43	HEX~FLX HUB	1
1	C-010	HEX~FLX DRIVE PLATE	1

SYMBOLS FLATNESS STRAIGHTNESS ANGULARITY PERPENDICULARITY PARALLELISM CONCENTRICITY TRUE POSITION ROUNDNESS CIRCULAR RUN OUT TOTAL RUN OUT CYLINDRICITY FINISH	DO NOT SCALE DRAWING TOLERANCES UNLESS OTHERWISE SPECIFIED .125 MAXIMUM ANGLE ±1/2° FRACTION ±1/32 DECIMAL .00 ±.01 .000 ±.005 .0000 ±.0005	HAYES MANUFACTURING INC. ® TITLE CUMMINS 3.3L HEX~FLX ASS'Y MATERIAL
CLASS MAKE: <input type="checkbox"/> BUY: <input type="checkbox"/>	DRAWN BY SIETING CHECKED BY SCALE	DATE 09-27-2016 DRAWING NO. 015-0-HC1-43-B224 SHEET OF REV.

THIS DRAWING IS THE PROPERTY OF HAYES MFG. INC. AND IS LOANED SUBJECT TO THE CONDITION THAT IT SHALL NOT BE REPRODUCED, COPIED, LOANED OR OTHERWISE DISPOSED OF, DIRECTLY OR INDIRECTLY. IT SHALL BE USED AS A MEANS OF REFERENCE TO WORK FURNISHED BY THIS COMPANY ONLY AND IS NOT TO BE SUBMITTED TO OUTSIDE PARTIES FOR EXAMINATION WITHOUT OUR CONSENT.