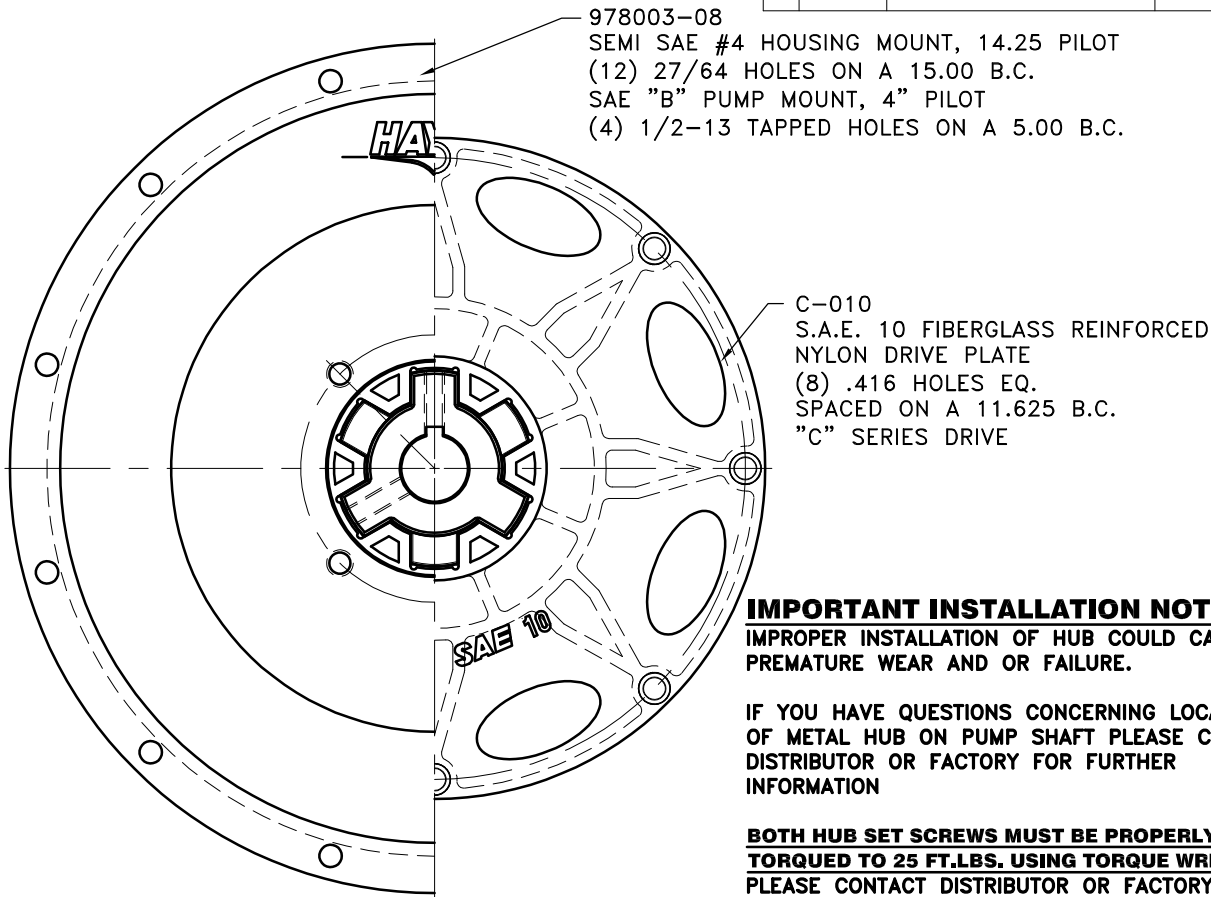
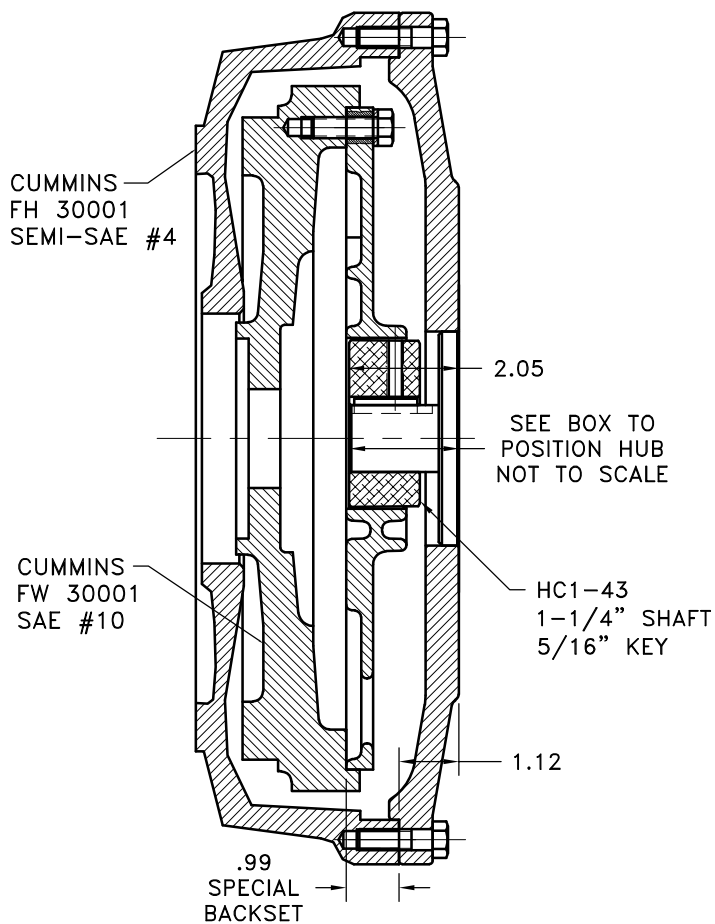


REV	DATE	CHANGE DESCRIPTION	MOD.BY	CK1	CK2



978003-08
 SEMI SAE #4 HOUSING MOUNT, 14.25 PILOT
 (12) 27/64 HOLES ON A 15.00 B.C.
 SAE "B" PUMP MOUNT, 4" PILOT
 (4) 1/2-13 TAPPED HOLES ON A 5.00 B.C.

C-010
 S.A.E. 10 FIBERGLASS REINFORCED
 NYLON DRIVE PLATE
 (8) .416 HOLES EQ.
 SPACED ON A 11.625 B.C.
 "C" SERIES DRIVE

IMPORTANT INSTALLATION NOTE!!!!
 IMPROPER INSTALLATION OF HUB COULD CAUSE
 PREMATURE WEAR AND OR FAILURE.

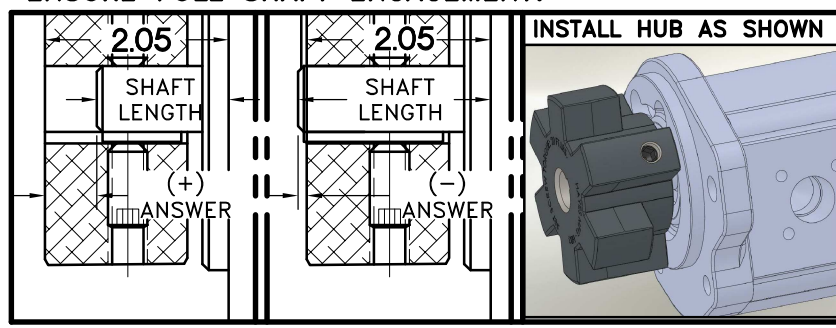
IF YOU HAVE QUESTIONS CONCERNING LOCATION
 OF METAL HUB ON PUMP SHAFT PLEASE CONTACT
 DISTRIBUTOR OR FACTORY FOR FURTHER
 INFORMATION

**BOTH HUB SET SCREWS MUST BE PROPERLY
 TORQUED TO 25 FT.LBS. USING TORQUE WRENCH.**
 PLEASE CONTACT DISTRIBUTOR OR FACTORY FOR
 ANY FURTHER QUESTIONS.

NOTE: REMOVE HUB FROM ASS'Y, PRESET HUB ON SHAFT
 AS SHOWN. **TORQUE BOTH SET SCREWS TO 25 FT.LBS.
 USING TORQUE WRENCH.** SHAFT SHOULD HAVE A
 MINIMUM OF 3/4" OF ENGAGEMENT IF NOT CONTACT
 FACTORY FOR RECOMMENDATIONS (231) 879-3372 TO
 GET HUB PRESET USE THIS EQUATION:

PERFORM CALCULATION BELOW:
2.05 - SHAFT LENGTH = HUB PRESET
 IF YOUR ANSWER IS (+) SHAFT IS INSIDE OF HUB, IF
 YOUR ANSWER IS (-) SHAFT STICKS OUT OF HUB.
 (SEE BOXES)

NOTE: THIS STEP IS IMPORTANT TO
 ENSURE FULL SHAFT ENGAGEMENT.



DET.	PART NUMBER	DESCRIPTION	QTY.
4	977645	BOLT KIT	1
3	978003-08	SAE 4 HOUSING	1
2	HC1-43	HEX~FLX HUB	1
1	C-010	HEX~FLX DRIVE PLATE	1

SYMBOLS		DET.		PART NUMBER		DESCRIPTION		QTY.	
—	FLATNESS	DO NOT SCALE							
—	STRAIGHTNESS	DRAWING							
—	ANGULARITY	TOLERANCES UNLESS							
—	PERPENDICULARITY	OTHERWISE SPECIFIED							
—	PARALLELISM	125 MAXIMUM							
—	CONCENTRICITY	ANGLE ±1/2°							
—	TRUE POSITION	FRACTION ±1/32							
—	ROUNDNESS	DECIMAL							
—	CIRCULAR RUN OUT	.00 ±.01							
—	TOTAL RUN OUT	.000 ±.005							
—	CYLINDRICITY	.0000 ±.0005							
—	FINISH								
CLASS		MAKE: <input type="checkbox"/>	BUY: <input type="checkbox"/>	DRAWN BY		DATE		DRAWING NO.	
DESCRIPTION				SIETING		07-17-2012		015-0-HC1-43-B4	
				CHECKED BY		SCALE		SHEET OF REV.	
				RJH				1	



TITLE
CUMMINS 3.3L HEX~FLX ASS'Y

THIS DRAWING IS THE PROPERTY OF HAYES MFG. INC. AND IS LOANED
 SUBJECT TO THE CONDITION THAT IT SHALL NOT BE REPRODUCED,
 COPIED, LOANED OR OTHERWISE DISPOSED OF, DIRECTLY OR INDIRECTLY.
 IT SHALL BE USED AS A MEANS OF REFERENCE TO WORK FURNISHED BY
 THIS COMPANY ONLY AND IS NOT TO BE SUBMITTED TO OUTSIDE PARTIES
 FOR EXAMINATION WITHOUT OUR CONSENT.