

| REV | DATE | CHANGE DESCRIPTION | MOD.BY | CK1 | CK2 |
|-----|------|--------------------|--------|-----|-----|
| | | | | | |

C-010
S.A.E. 10 FIBERGLASS REINFORCED
NYLON DRIVE PLATE
(8) .416 HOLES EQ.
SPACED ON A 11.625 B.C.
"C" SERIES DRIVE

PUMP
OR
MOTOR

SEE BOX TO
POSITION HUB
NOT TO SCALE

2.11
±1/16

.46

HC2-09
7/8" SHAFT
3/16" KEY

DEUTZ 2200-1771
FLYWHEEL SAE #8 #10

SAE 4 HOUSING

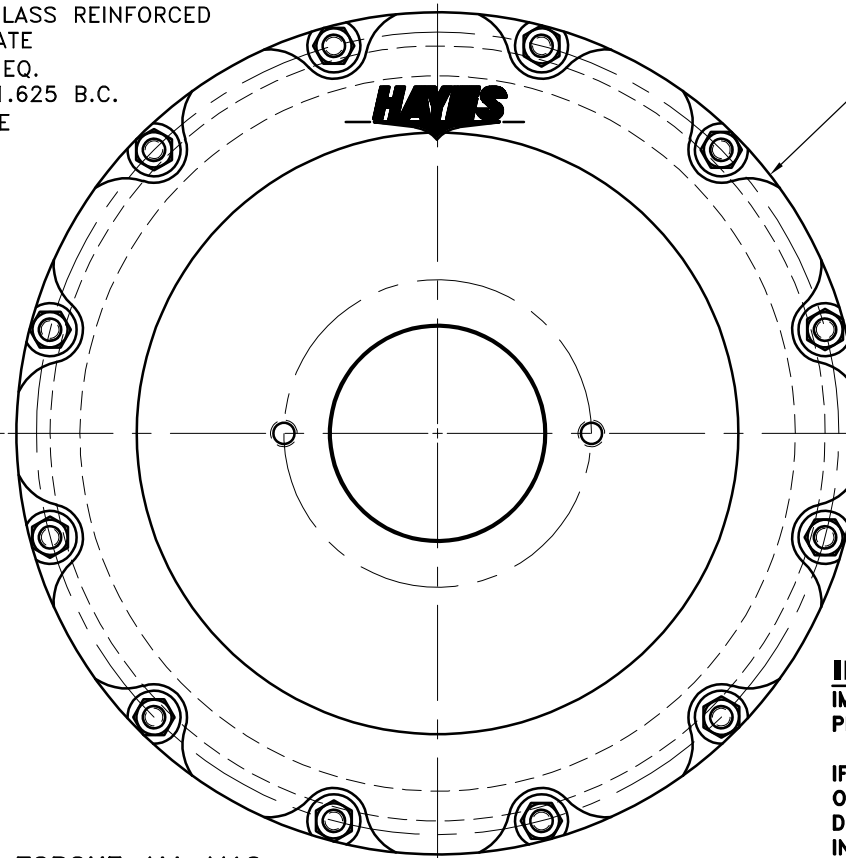
2.80
(71.1mm)

NOTE: TORQUE ALL M10
BOLTS 29-33 FT.LBS.

3.11
(79mm)

3.15

5.27



977553-02
S.A.E. SEMI-4 HOUSING MOUNT
27/64 DRILL THRU
12 HOLES EQUALLY SPACED
ON 15.00 B.C.
4.00" PUMP PILOT
S.A.E. "B" PUMP MOUNT.
(2) 1/2-13 TAPPED HOLES EQUALLY
SPACED ON 5.750 B.C.

IMPORTANT INSTALLATION NOTE!!!!
IMPROPER INSTALLATION OF HUB COULD CAUSE
PREMATURE WEAR AND OR FAILURE.

IF YOU HAVE QUESTIONS CONCERNING LOCATION
OF METAL HUB ON PUMP SHAFT PLEASE CONTACT
DISTRIBUTOR OR FACTORY FOR FURTHER
INFORMATION

**BOTH HUB SET SCREWS MUST BE PROPERLY
TORQUED TO 25 FT.LBS. USING TORQUE WRENCH.**
PLEASE CONTACT DISTRIBUTOR OR FACTORY FOR
ANY FURTHER QUESTIONS.

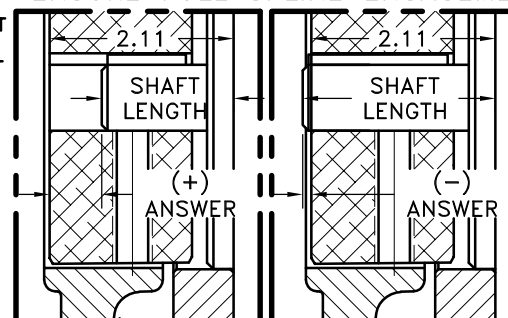
NOTE: REMOVE HUB FROM ASS'Y, PRESET HUB ON SHAFT
& REASSEMBLE USING NUT & BOLT GRADE LOC-TITE ON
SET SCREWS. TORQUE SET SCREWS TO 25 FT.LBS. SHAFT
SHOULD HAVE A MINIMUM OF 3/4" OF ENGAGEMENT IF
NOT CONTACT FACTORY FOR RECOMMENDATIONS. TO GET
HUB PRESET USE THIS EQUATION:

EXAMPLE:
2.11 - SHAFT LENGTH = HUB PRESET

IF YOUR ANSWER IS (+) SHAFT IS INSIDE OF HUB, IF
YOUR ANSWER IS (-) SHAFT STICKS OUT OF HUB.
(SEE BOXES)

THIS DRAWING IS THE PROPERTY OF HAYES MFG. INC. AND IS LOANED
SUBJECT TO THE CONDITION THAT IT SHALL NOT BE REPRODUCED,
COPIED, LOANED OR OTHERWISE DISPOSED OF, DIRECTLY OR INDIRECTLY.
IT SHALL BE USED AS A MEANS OF REFERENCE TO WORK FURNISHED BY
THIS COMPANY ONLY AND IS NOT TO BE SUBMITTED TO OUTSIDE PARTIES
FOR EXAMINATION WITHOUT OUR CONSENT.

NOTE: THIS STEP IS IMPORTANT TO
ENSURE FULL SPLINE ENGAGEMENT.



C-010-HC2-09

| | | | |
|---|-----------|----------------------|---|
| 4 | 977645 | BOLT KIT | 1 |
| 3 | 977553-02 | HOUSING [4] | 1 |
| 2 | HC2-09 | "C" HEX~FLX HUB | 1 |
| 1 | C-010 | SAE 10 HEX~FLX PLATE | 1 |

| SYMBOLS | DET. | PART NUMBER | DESCRIPTION | QTY. |
|---|--|---|---|---|
| FLATNESS STRAIGHTNESS ANGULARITY PERPENDICULARITY PARALLELISM CONCENTRICITY TRUE POSITION ROUNDNESS CIRCULAR RUN OUT TOTAL RUN OUT CYLINDRICITY FINISH | DO NOT SCALE DRAWING TOLERANCES UNLESS OTHERWISE SPECIFIED 125 MAXIMUM ANGLE ±1/2° FRACTION ±1/32 DECIMAL .00 ±.01 .000 ±.005 .0000 ±.0005 | MAKE: <input checked="" type="checkbox"/> BUY: <input type="checkbox"/> | HAYES TM MANUFACTURING INC. ® TITLE DEUTZ HOUSING W/ HEX~FLX COUPLING ASS'Y MATERIAL | |
| CLASS DEUTZ DESCRIPTION | | DRAWN BY SIETING CHECKED BY | DATE 06-12-07 SCALE | DRAWING NO. 023-0-HC2-09-B2 SHEET OF REV. |