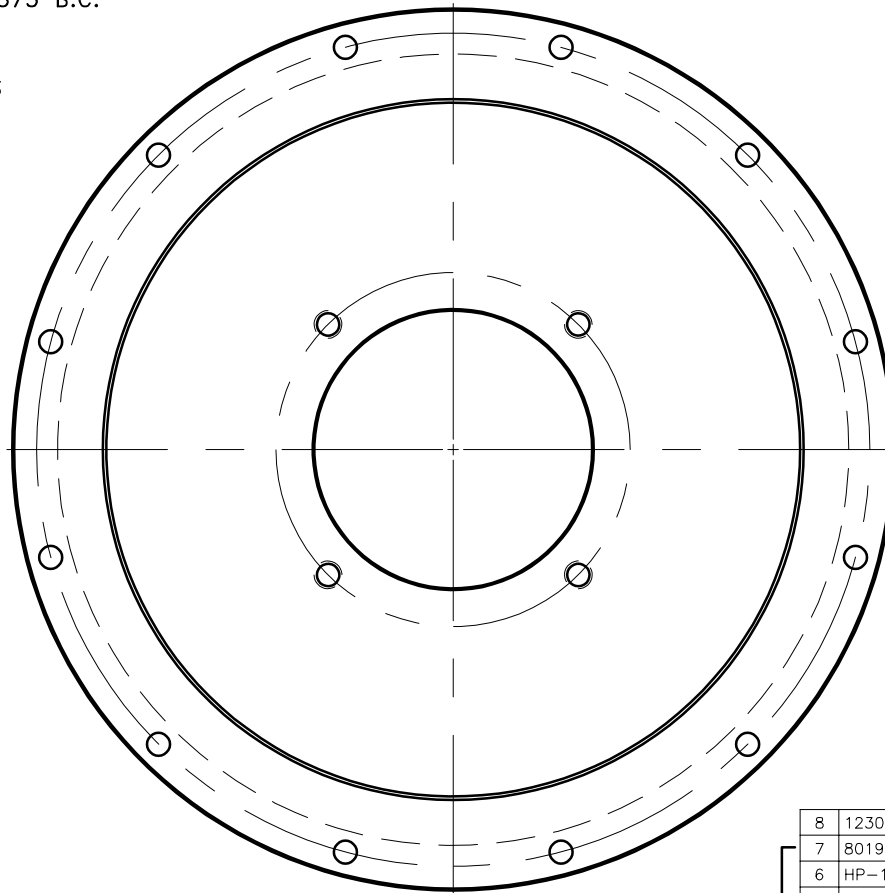
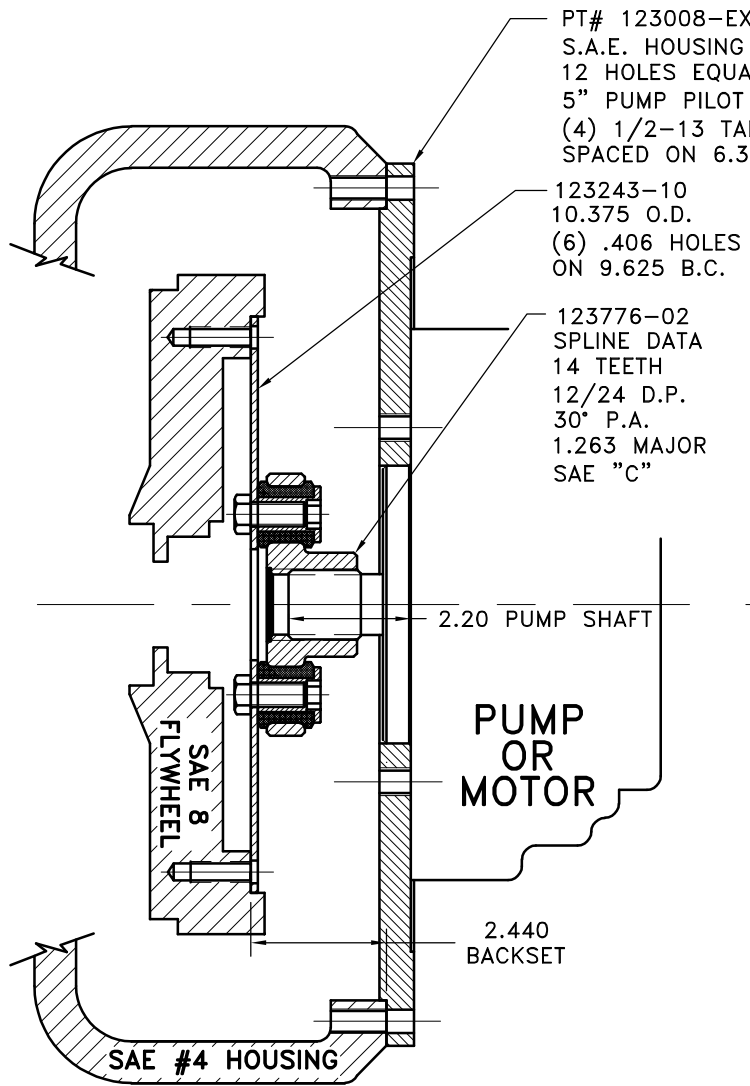


REV	DATE	CHANGE DESCRIPTION	MOD. BY	CK1	CK2
F	04/16/2007	CHANGED TO BOLTED INSERTS.	ZS	RJH	HM



**COUPLING ASS'Y
#123040**

UP TO 65 HP

8	123008-EX4	PUMP MOUNT PLATE	1
7	801912	GREASE	1
6	HP-1312-S-62	HUBBARD PLUG	1
5	BOLT	7/16-20x1 HHB Y D	6
4	123727	THREADED BUSHING	6
3	H62500	NEOPRENE INSERT	6
2	123776-02	COUPLING HUB	1
1	123243-10	FLYWHEEL PLATE	1

SYMBOLS	DET.	PART NUMBER	DESCRIPTION	QTY.
FLATNESS STRAIGHTNESS ANGULARITY PERPENDICULARITY PARALLELISM CONCENTRICITY TRUE POSITION ROUNDNESS CIRCULAR RUN OUT TOTAL RUN OUT CYLINDRICITY FINISH	DO NOT SCALE DRAWING TOLERANCES UNLESS OTHERWISE SPECIFIED		HAYES MANUFACTURING INC. ® TITLE FLYWHEEL COUPLING ASS'Y W/ PUMP MT PLATE MATERIAL	
CLASS SAE 8 DESCRIPTION 8,4,14T12/14,C4,65	MAKE: <input checked="" type="checkbox"/> BUY: <input type="checkbox"/> DRAWN BY HAVEMAN CHECKED BY RJH	DATE 7-17-89 SCALE	DRAWING NO. 123039 SHEET OF REV.	

THIS DRAWING IS THE PROPERTY OF HAYES MFG. INC. AND IS LOANED
SUBJECT TO THE CONDITION THAT IT SHALL NOT BE REPRODUCED,
COPIED, LOANED OR OTHERWISE DISPOSED OF, DIRECTLY OR INDIRECTLY.
IT SHALL BE USED AS A MEANS OF REFERENCE TO WORK FURNISHED BY
THIS COMPANY ONLY AND IS NOT TO BE SUBMITTED TO OUTSIDE PARTIES
FOR EXAMINATION WITHOUT OUR CONSENT.