

CUSTOMER DRAWING

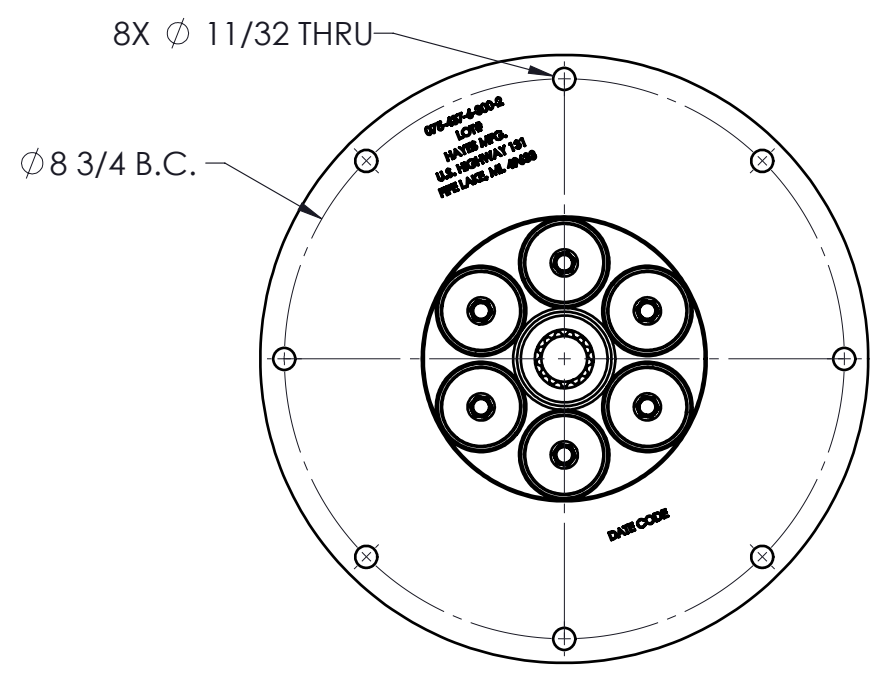
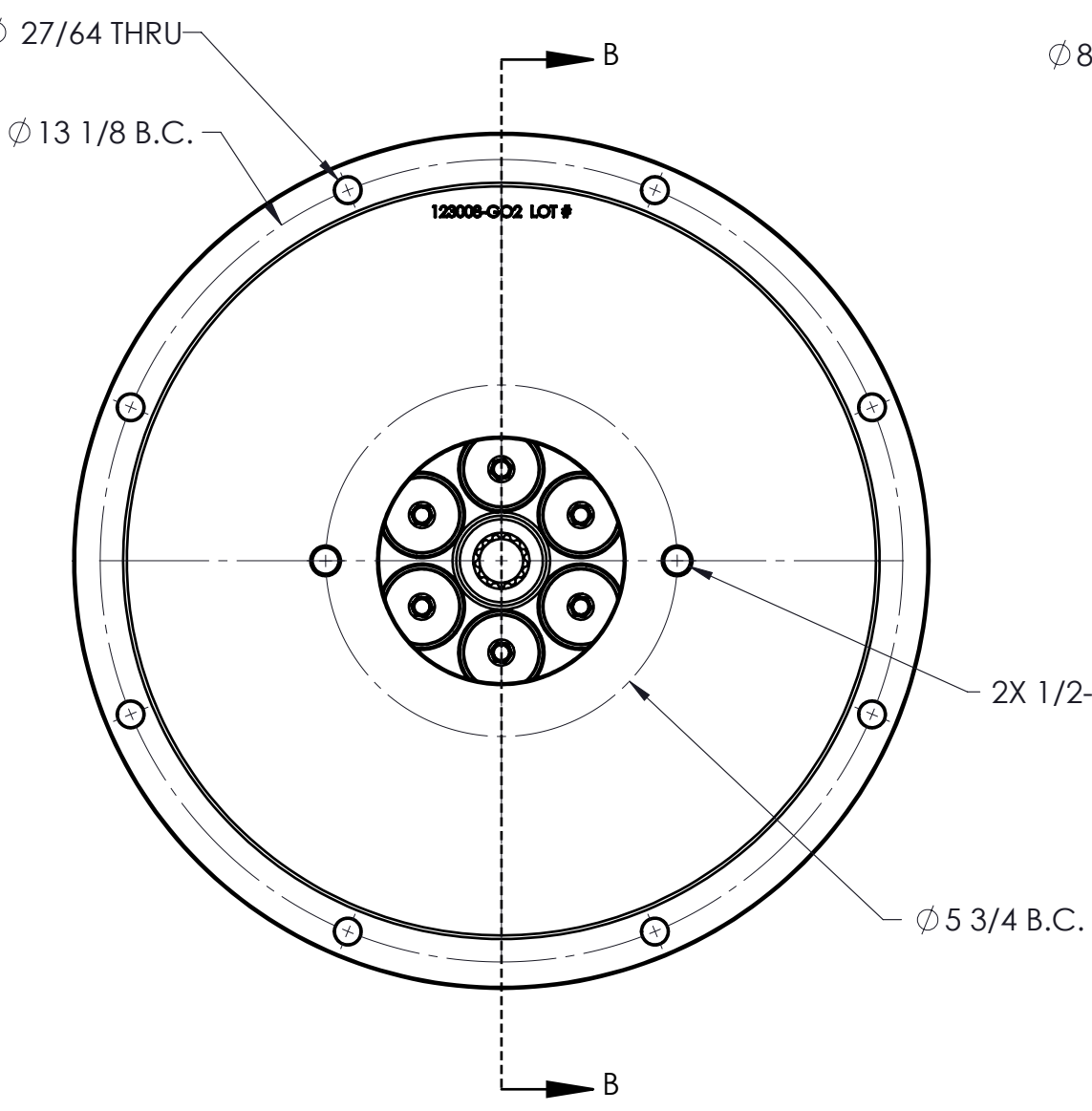
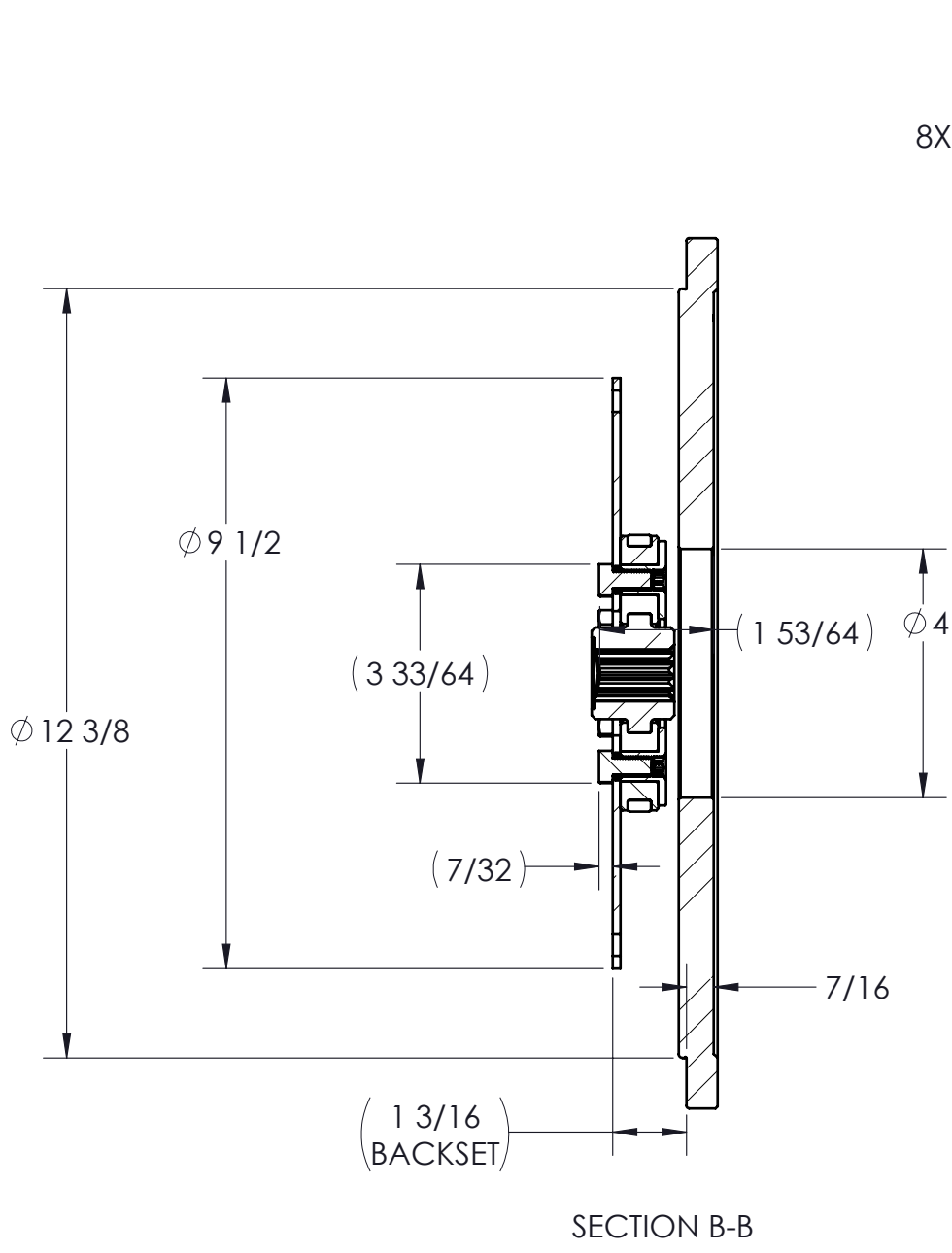
REVISIONS					
ZONE	REV.	DESCRIPTION	DATE	APR 1	APR 2
	F	UPDTAED TO PILOTED BUSHINGS	12/15/2022	ZS	

D

C

B

A



COUPLING IS NOT SERVICABLE

PUMP DRIVE SPECS	
FLYWHEEL	SAE 7.5
HOUSING	SAE 5
PUMP FLANGE	SAE B 2-BOLT
PUMP SHAFT	13T 16/32 "B"
HP RATING (@1800 RPM)	50

PROPRIETARY AND CONFIDENTIAL
THE INFORMATION CONTAINED IN THIS DRAWING IS THE SOLE PROPERTY OF HAYES MANUFACTURING. ANY REPRODUCTION IN PART OR AS A WHOLE WITHOUT THE WRITTEN PERMISSION OF HAYES MANUFACTURING IS PROHIBITED.

UNLESS OTHERWISE SPECIFIED:
DIMENSIONS ARE IN INCHES
TOLERANCES:
FRACTIONAL: ±1/32
ANGULAR: MACH ±1/2°
TWO DECIMAL: ±0.01
THREE DECIMAL: ±0.005
FOUR DECIMAL: ±0.0005

SYMBOLS
□ FLATNESS
○ ROUNDNESS
// PARALLELISM
∅ DIAMETER
"R" RADIUS
⊙ CONCENTRICITY
⊕ TRUE POSITION
⊥ PERPENDICULARITY
⌒ CIRCULAR RUN OUT
⌒ TOTAL RUN OUT
└─ COUNTERBORE
└─ COUNTERSINK
▽ HOLE DEPTH
≡ SYMMETRIC

CLASS	SAE 7.5
DESCRIPTION	7-1 1/2, 5, 13T 16/32, 50
MAKE	X
WEIGHT	26.1 LB
BUY	VOLUME
CU. IN.	
HEAT TREAT	
FINISH	

ITEM NO.	PART NUMBER	DESCRIPTION	QTY.
1	123277	FLYWHEEL COUPLING ASSEMBLY	1
2	123008-GO2	PUMP MOUNT PLATE	1

DRAWN	NAME	DATE
PCM APPR.	MM	4/24/2023
ENG APPR.		
SHIP. APPR.		
QA APPR.		
MATERIAL		

TITLE: PUMP DRIVE KIT	
DWG. NO. 123344	REV F
DO NOT SCALE	SHEET 1 OF 4



D

C

B

A