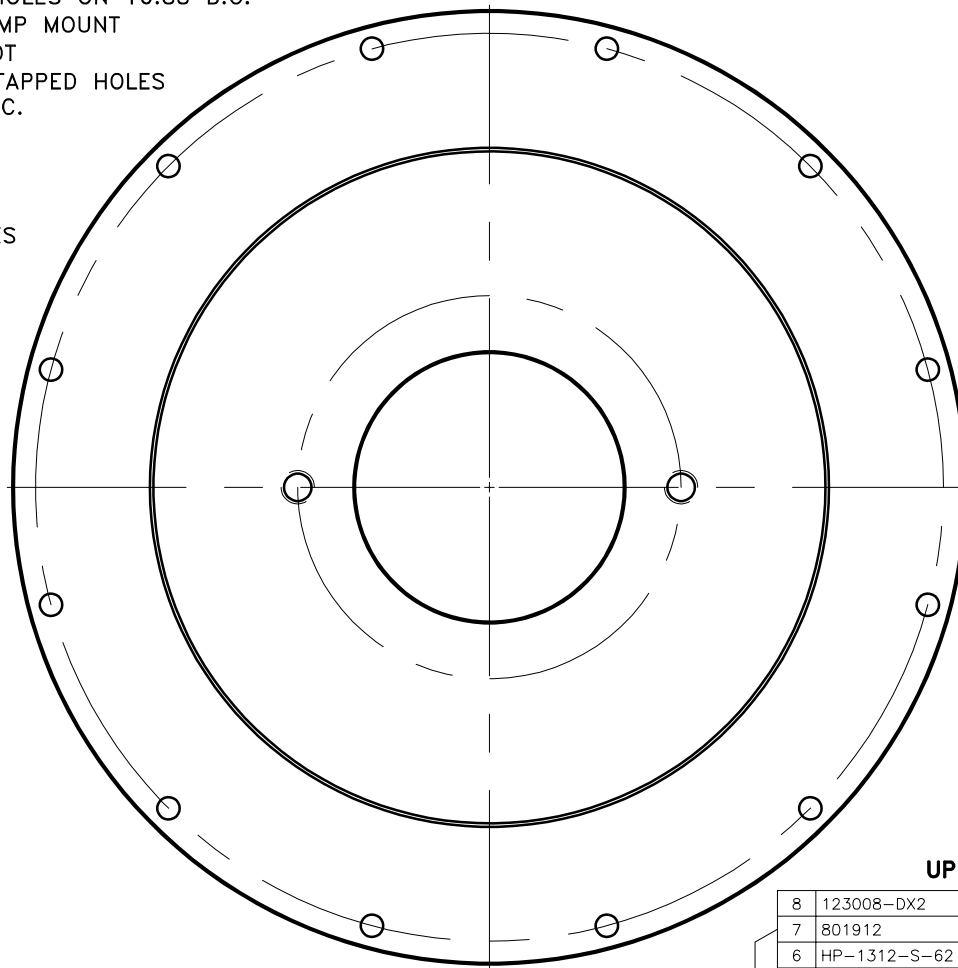
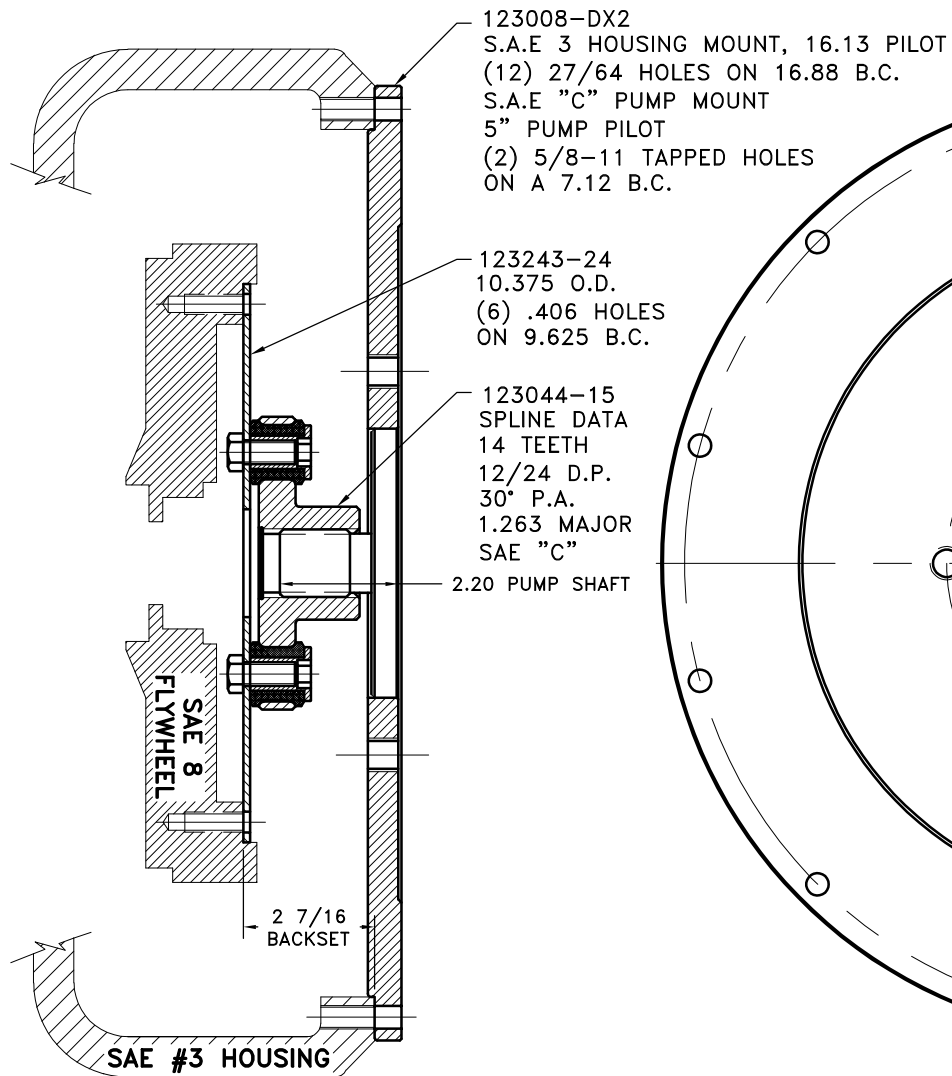


REV	DATE	CHANGE DESCRIPTION	MOD.BY	CK1	CK2
G	07/14/2010	CHANGED TO THREADED INSERTS	PB	RJH	JM



UP TO 110 HP

COUPLING ASS'Y #123388

APPLY SUPPLIED COUPLING GREASE  
TO INTERNAL AND EXTERNAL SPLINE  
AT ASSEMBLY

8	123008-DX2	PUMP MOUNT PLATE	1
7	801912	GREASE	1
6	HP-1312-S-62	HUBBARD PLUG	1
5	HX200	7/16-20 x 1" HHB	6
4	123727	THREADED BUSHING	6
3	H62500	NEOPRENE INSERT	6
2	123044-15	COUPLING HUB	1
1	123243-24	FLYWHEEL PLATE	1

SYMBOLS	DET.	PART NUMBER	DESCRIPTION	QTY.
FLATNESS STRAIGHTNESS ANGULARITY PERPENDICULARITY PARALLELISM CONCENTRICITY TRUE POSITION ROUNDNESS CIRCULAR RUN OUT TOTAL RUN OUT CYLINDRICITY FINISH	DO NOT SCALE DRAWING TOLERANCES UNLESS OTHERWISE SPECIFIED .125 MAXIMUM ANGLE ±1/2° FRACTION ±1/32 DECIMAL .00 ±.01 .000 ±.005 .0000 ±.0005	MAKE: <input checked="" type="checkbox"/> BUY: <input type="checkbox"/>	<b>HAYES</b> MANUFACTURING INC. ® TITLE FLYWHEEL COUPLING ASS'Y W/PMP MATERIAL	
CLASS SAE 8 DESCRIPTION 8,3,14T12/24,C2,110	DRAWN BY LANNEN CHECKED BY	DATE 7-17-89 SCALE	DRAWING NO. 123389 SHEET OF REV.	

THIS DRAWING IS THE PROPERTY OF HAYES MFG. INC. AND IS LOANED  
SUBJECT TO THE CONDITION THAT IT SHALL NOT BE REPRODUCED,  
COPIED, LOANED OR OTHERWISE DISPOSED OF, DIRECTLY OR INDIRECTLY.  
IT SHALL BE USED AS A MEANS OF REFERENCE TO WORK FURNISHED BY  
THIS COMPANY ONLY AND IS NOT TO BE SUBMITTED TO OUTSIDE PARTIES  
FOR EXAMINATION WITHOUT OUR CONSENT.