

REV	DATE	CHANGE DESCRIPTION	MOD.BY	CK1	CK2
F	11/10/2004	CHANGED COUPLING ASSY #	ZS	RJH	HM

PT# 123061-07  
S.A.E. HOUSING MOUNT 27/64 DRILL  
THRU 12 HOLES EQUALLY SPACED  
ON 15.00 B.C. 7.0866" PUMP PILOT  
S.A.E. "SPECIAL" PUMP MOUNT.  
(4) 5/8-11 TAPPED HOLES EQUALLY  
SPACED ON 8.8189 B.C.

123243-75  
10.374 O.D.  
(6) .406 HOLES  
ON 9.625 B.C.

123215-12  
SPLINE DATA:  
21 TEETH  
W45x2x30x21x9H  
DIN 5480  
1.790 MAJOR

REXROTH  
PUMP A7V

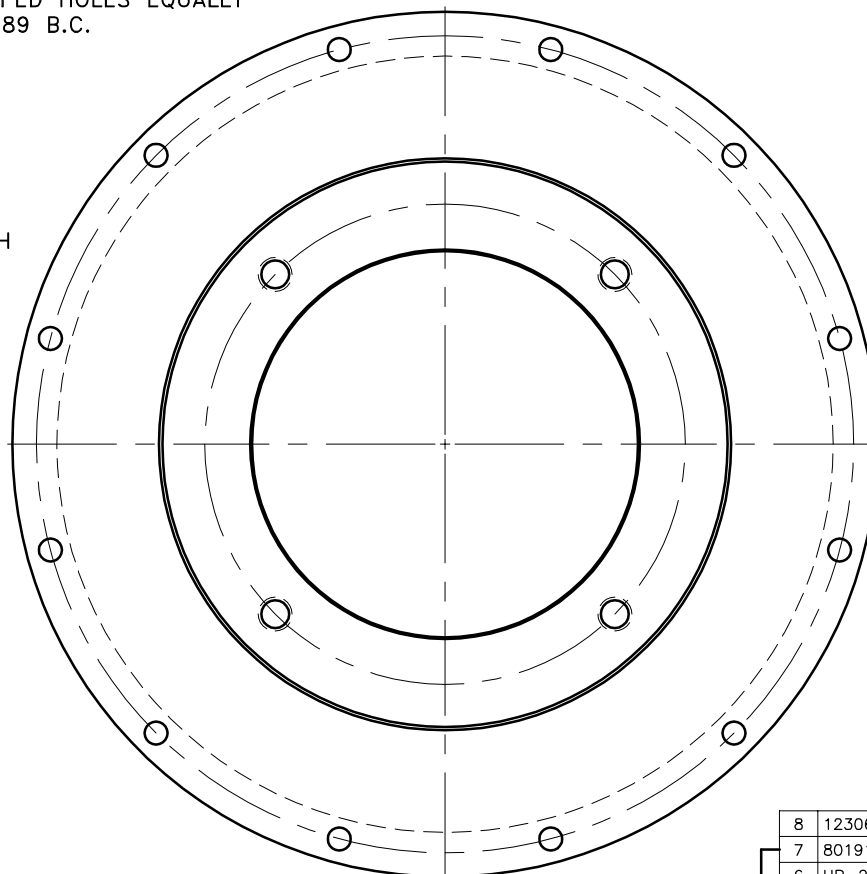
3.54  
SHAFT LENGTH

2.44  
BACKSET

1.91

SAE 8  
FLYWHEEL

SAE #4 HOUSING



COUPLING ASS'Y #126986

UP TO 150 H.P.

8	123061-07	PUMP MTG. PLATE	1
7	801912	GREASE	1
6	HP-2000-S-62	HUBBARD PLUG	1
5	HX200	7/16-21 x 1" HHB	8
4	123727	THREADED BUSHING	8
3	H62500	NEOPRENE INSERT	8
2	123215-12	COUPLING HUB	1
1	123243-75	FLYWHEEL PLATE	1

SYMBOLS	DET.	PART NUMBER	DESCRIPTION	QTY.
FLATNESS STRAIGHTNESS ANGULARITY SQUARENESS PARALLELISM PERPENDICULARITY TRUE POSITION ROUNDTNESS CIRCULAR RUN OUT TOTAL RUN OUT CYLINDRICITY FINISH	DO NOT SCALE DRAWING TOLERANCES UNLESS OTHERWISE SPECIFIED MAXIMUM ANGLE $\pm 1/2^\circ$ FRACTION $\pm 1/32$ DECIMAL .00 $\pm .01$ .000 $\pm .005$ .0000 $\pm .0005$		<b>HAYES</b> MANUFACTURING INC. ® TITLE FLYWHEEL COUPLING ASSY WITH PUMP MOUNT PLATE MATERIAL	
- UNLESS OTHERWISE SPECIFIED - REMOVE FIRST THREAD ON ALL TAPPED HOLES BREAK ALL SHARP CORNERS .010 TO .020 STAMP OR MARK DRAWING NO.	DRAWN BY SIETING CHECKED BY RJH	DATE 04-26-90 SCALE	DRAWING NO. 123500 SHEET OF REV.	

THIS DRAWING IS THE PROPERTY OF HAYES MFG. INC. AND IS LOANED  
SUBJECT TO THE CONDITION THAT IT SHALL NOT BE REPRODUCED,  
COPIED, LOANED OR OTHERWISE DISPOSED OF, DIRECTLY OR INDIRECTLY.  
IT SHALL BE USED AS A MEANS OF REFERENCE TO WORK FURNISHED BY  
THIS COMPANY ONLY AND IS NOT TO BE SUBMITTED TO OUTSIDE PARTIES  
FOR EXAMINATION WITHOUT OUR CONSENT.