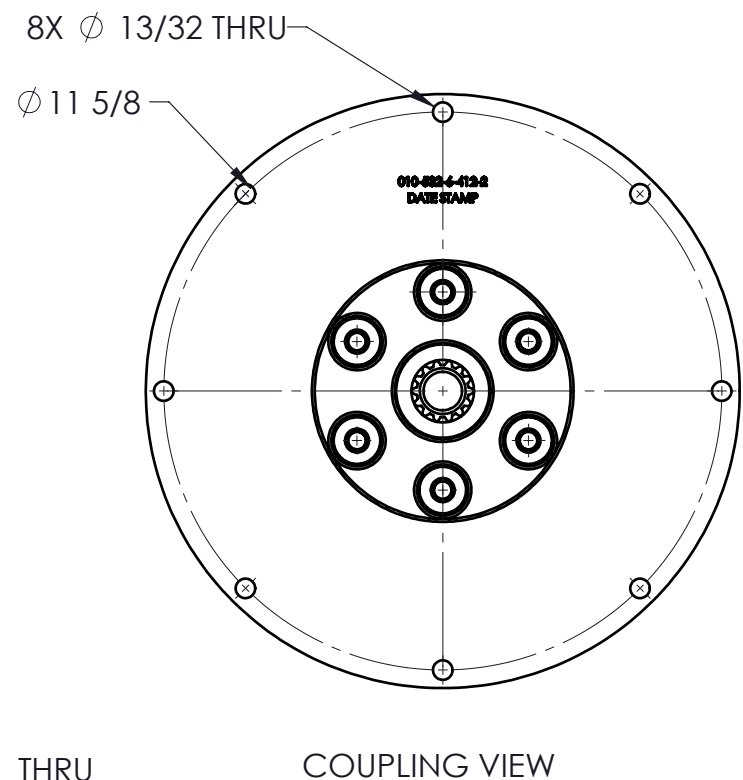
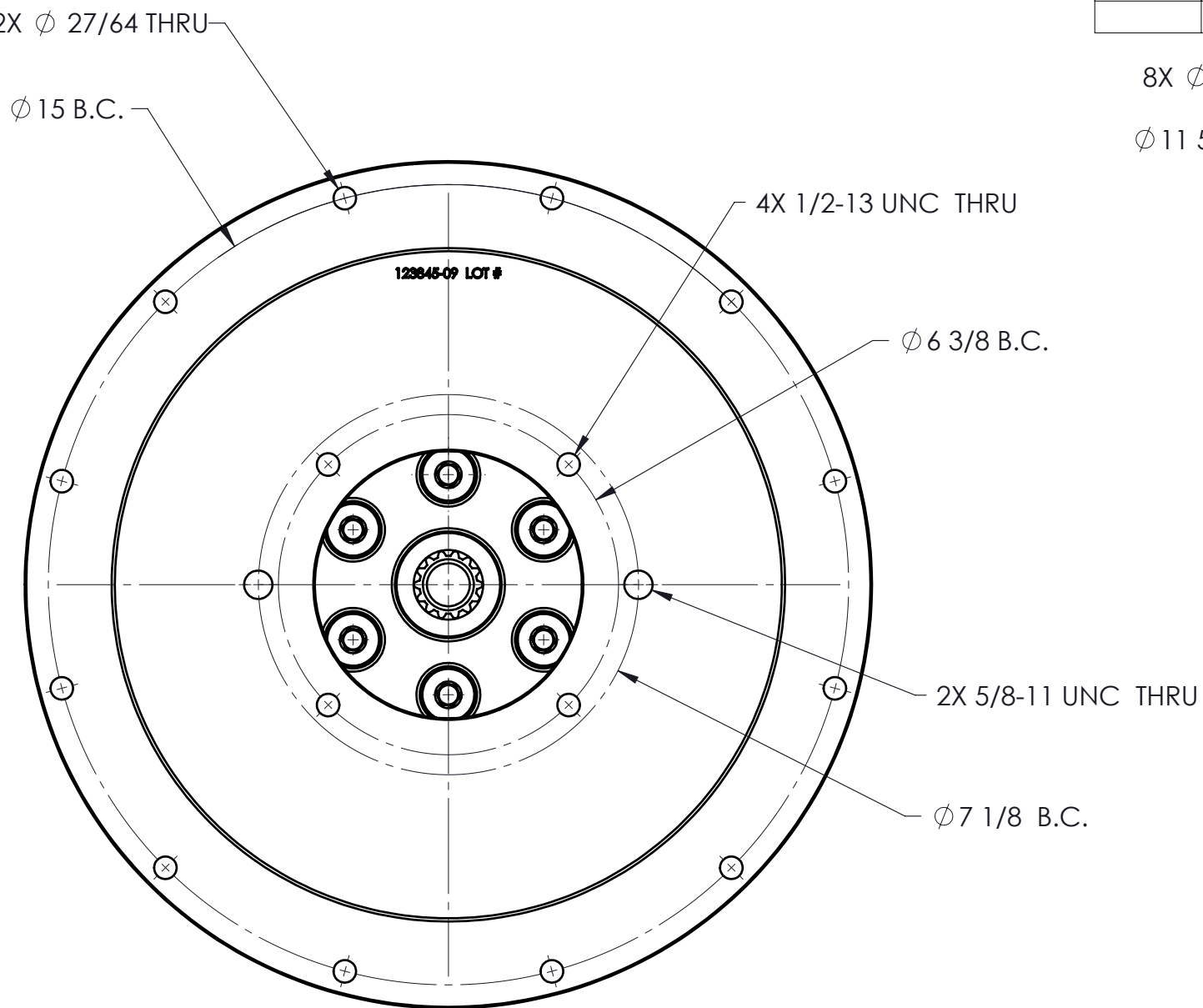
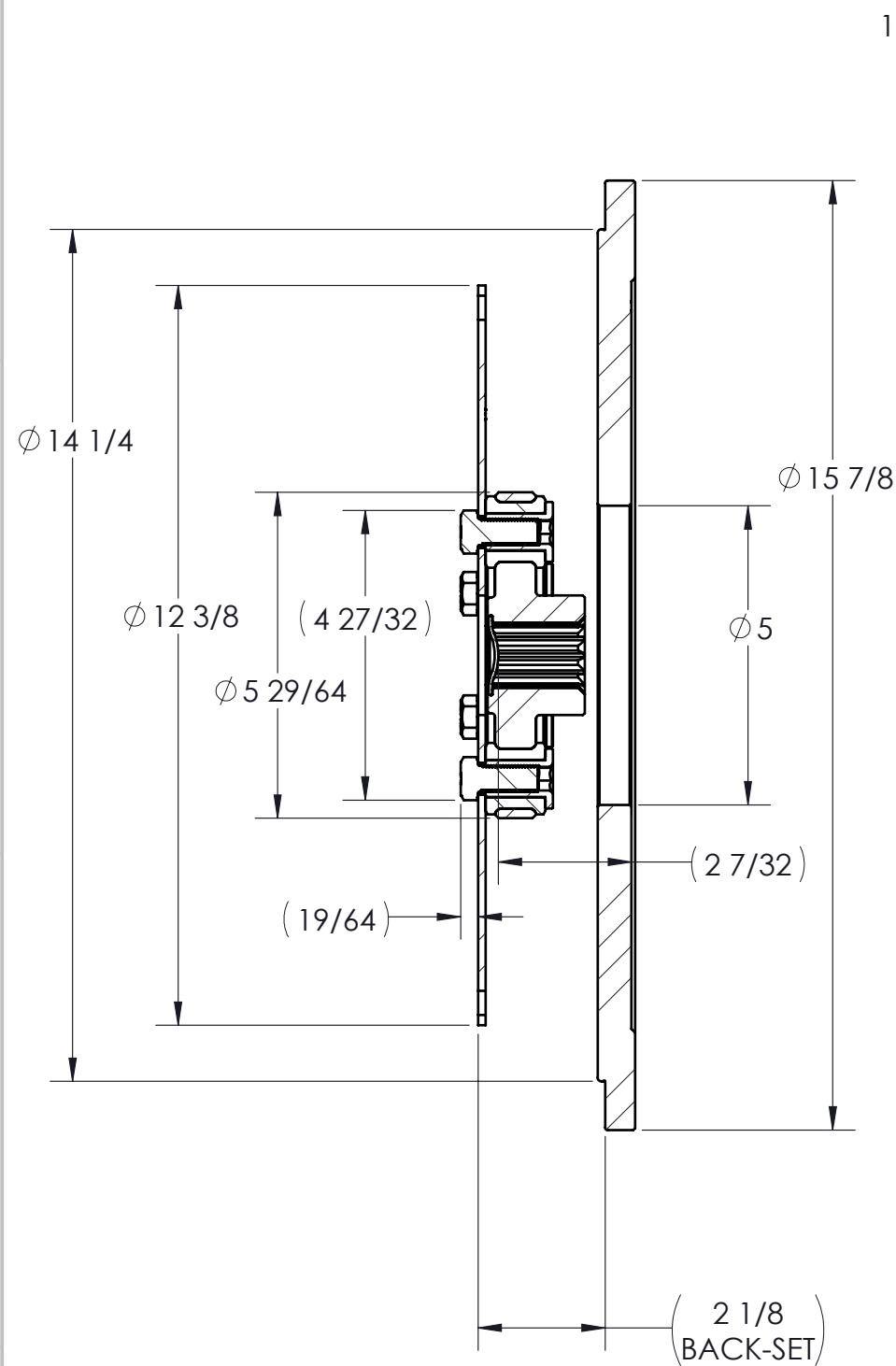


CUSTOMER DRAWING

REVISIONS					
ZONE	REV.	DESCRIPTION	DATE	APR 1	APR 2
	F	UPDATED TO PILOTED	9/6/2022	ZS	



COUPLING IS NOT SERVICABLE

ITEM NO.	PART NUMBER	DESCRIPTION	QTY.
1	123822	FLYWHEEL COUPLING ASSEMBLY	1
2	123845-09	PUMP MOUNT PLATE	1

PUMP DRIVE SPECS	
FLYWHEEL	SAE 10
HOUSING	SAE 4
PUMP FLANGE	SAE C 2&4-BOLT
PUMP SHAFT	14T 12/24 "C"
HP RATING (@1800 RPM)	110

UNLESS OTHERWISE SPECIFIED:
DIMENSIONS ARE IN INCHES
TOLERANCES:
FRACTIONAL $\pm 1/32$
ANGULAR: MACH $\pm 1/2^\circ$
TWO DECIMAL $\pm .01$
THREE DECIMAL $\pm .005$
FOUR DECIMAL $\pm .0005$

SYMBOLS		

	NAME	DATE
DRAWN	PJH	9/6/2022
PCM APPR.		
ENG APPR.	ZS	8/17/2023
SHIP. APPR.		
QA APPR.		
MATERIAL		



TITLE: FLYWHEEL COUPLING
W/PMP

DWG. NO. 123768	REV F
--------------------	----------

DO NOT SCALE	SHEET 1 OF 4
--------------	--------------

PROPRIETARY AND CONFIDENTIAL

THE INFORMATION CONTAINED IN THIS
DRAWING IS THE SOLE PROPERTY OF
HAYES MANUFACTURING. ANY
REPRODUCTION IN PART OR AS A WHOLE
WITHOUT THE WRITTEN PERMISSION OF
HAYES MANUFACTURING IS PROHIBITED.

DESCRIPTION	QTY	UNIT	AMOUNT
10,4,14T12/24,C24,110	1	EA	10.4

MAKE	WEIGHT
X	36.9 LB
BUY	VOLUME
	CU.IN.

HEAT TREAT
FINISH