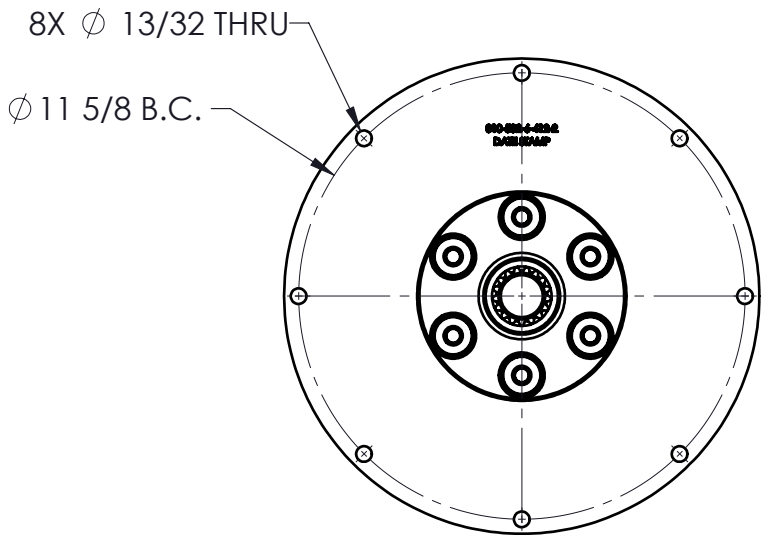
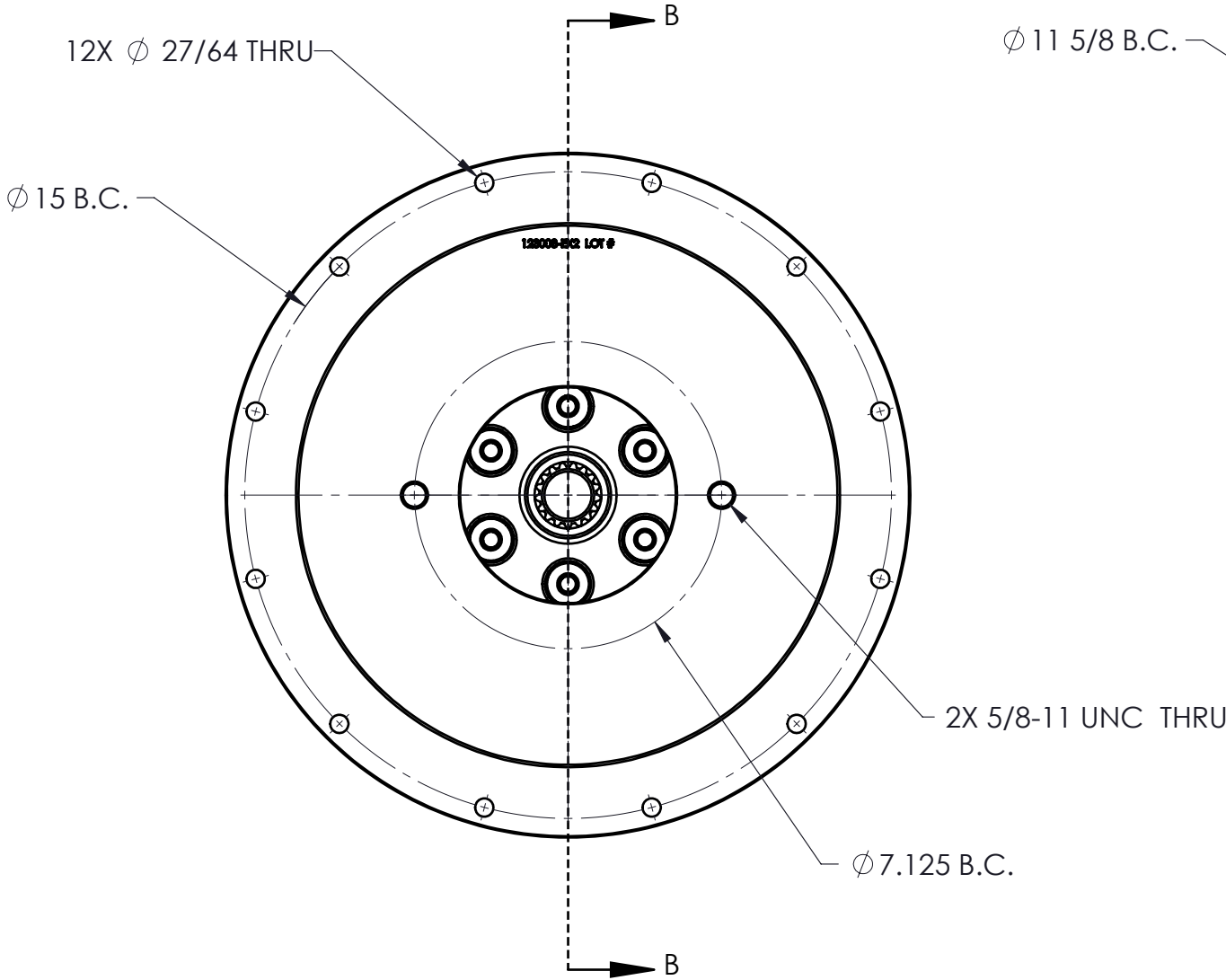
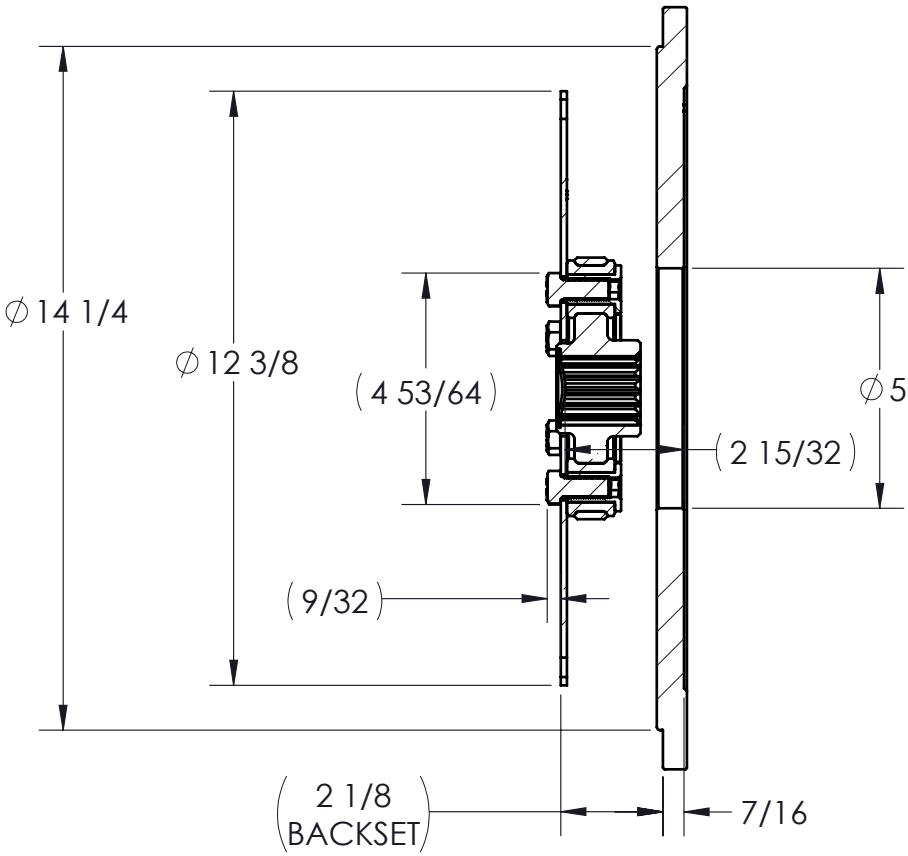


CUSTOMER DRAWING

REVISIONS					
ZONE	REV.	DESCRIPTION	DATE	APR 1	APR 2
3-B2, 4-B2	E	UPDATED TO PILOTED BUSHINGS	12/7/2022	ZS	



COUPLING FRONT VIEW

COUPLING IS NOT SERVICABLE

PUMP DRIVE SPECS	
FLYWHEEL	SAE 10
HOUSING	SAE 4
PUMP FLANGE	SAE C 2-BOLT
PUMP SHAFT	17T 12/24 "CC"
HP RATING (@1800 RPM)	110

PROPRIETARY AND CONFIDENTIAL
THE INFORMATION CONTAINED IN THIS DRAWING IS THE SOLE PROPERTY OF HAYES MANUFACTURING. ANY REPRODUCTION IN PART OR AS A WHOLE WITHOUT THE WRITTEN PERMISSION OF HAYES MANUFACTURING IS PROHIBITED.

UNLESS OTHERWISE SPECIFIED: DIMENSIONS ARE IN INCHES TOLERANCES: FRACTIONAL $\pm 1/32$ ANGULAR $\pm 1/2^\circ$ TWO DECIMAL ± 0.01 THREE DECIMAL ± 0.005 FOUR DECIMAL ± 0.0005		SYMBOLS \square FLATNESS \bigcirc ROUNDNESS \parallel PARALLELISM ϕ DIAMETER "R" RADIUS \oplus CONCENTRICITY \oplus TRUE POSITION \perp PERPENDICULARITY \nearrow CIRCULAR RUN OUT \searrow TOTAL RUN OUT \sqcup COUNTERBORE ∇ COUNTERSINK ∇ HOLE DEPTH \equiv SYMMETRIC	
CLASS SAE 10		DESCRIPTION 10,4,17T12/24,C2,110	
MAKE X	WEIGHT 36.8 LB	HEAT TREAT	
BUY	VOLUME CU.IN.	FINISH	

ITEM NO.	PART NUMBER	DESCRIPTION	QTY.
1	123008-EX2	PUMP MOUNT PLATE	1
2	123900	FLYWHEEL COUPLING	1

DRAWN	NAME SIETING	DATE 12/6/2022
PCM APPR.		
ENG APPR.	ZS	2/12/2022
SHIP. APPR.		
QA APPR.		
MATERIAL		

TITLE: PUMP DRIVE KIT

DWG. NO. 124331

REV E

DO NOT SCALE SHEET 1 OF 4