

5

4

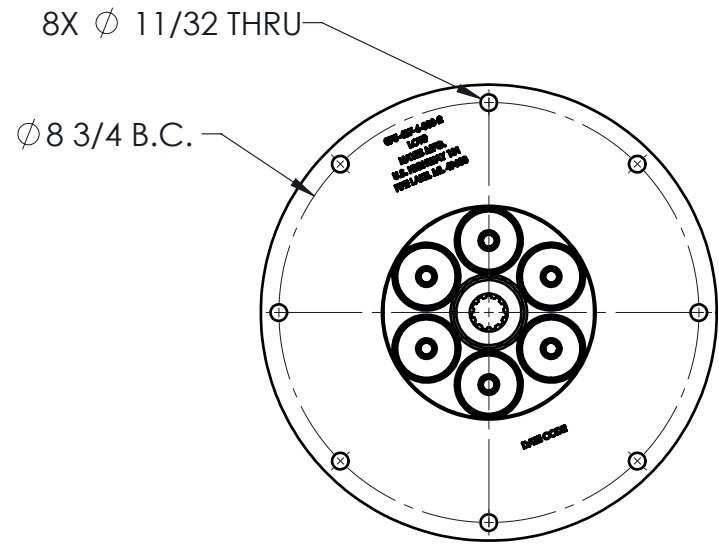
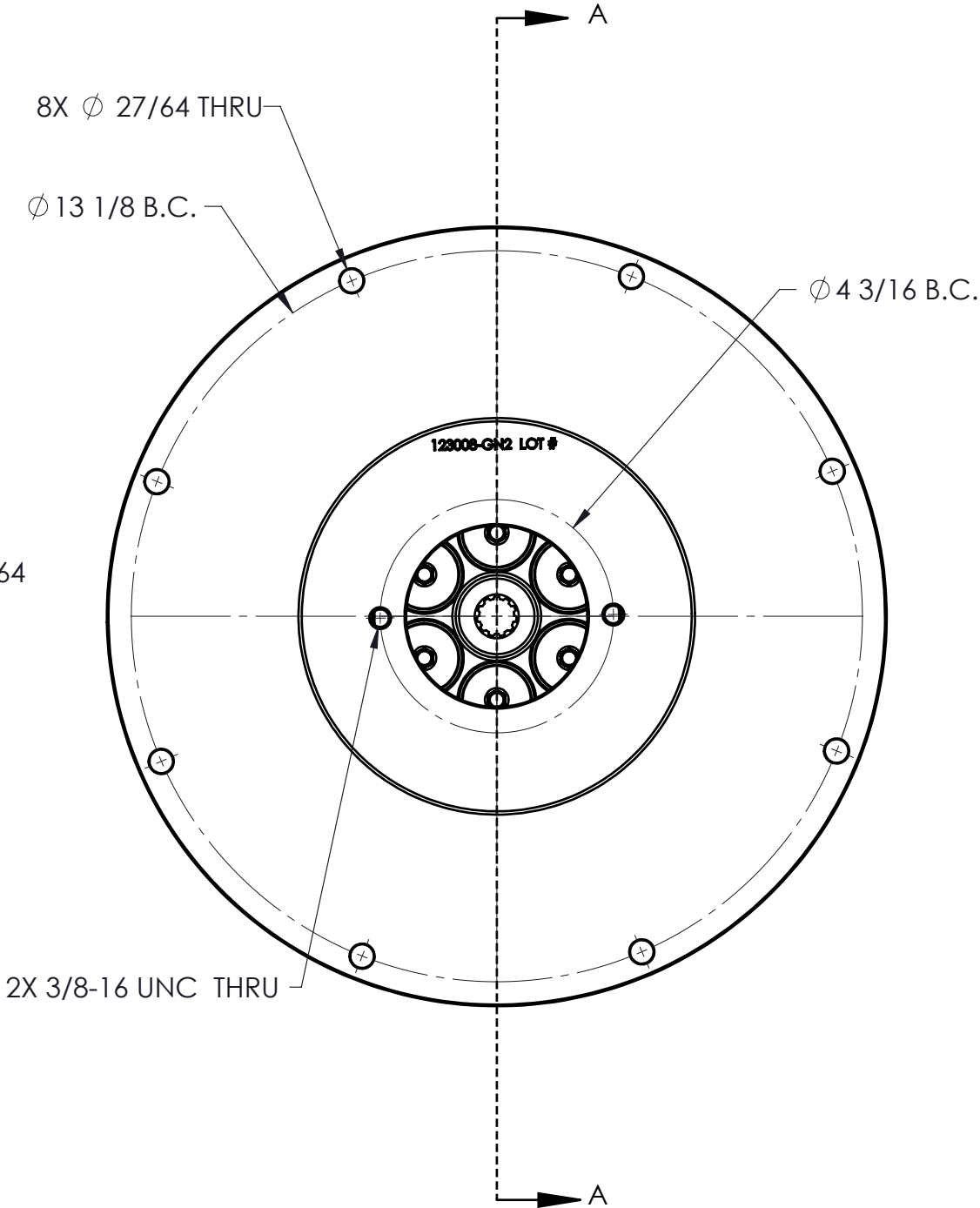
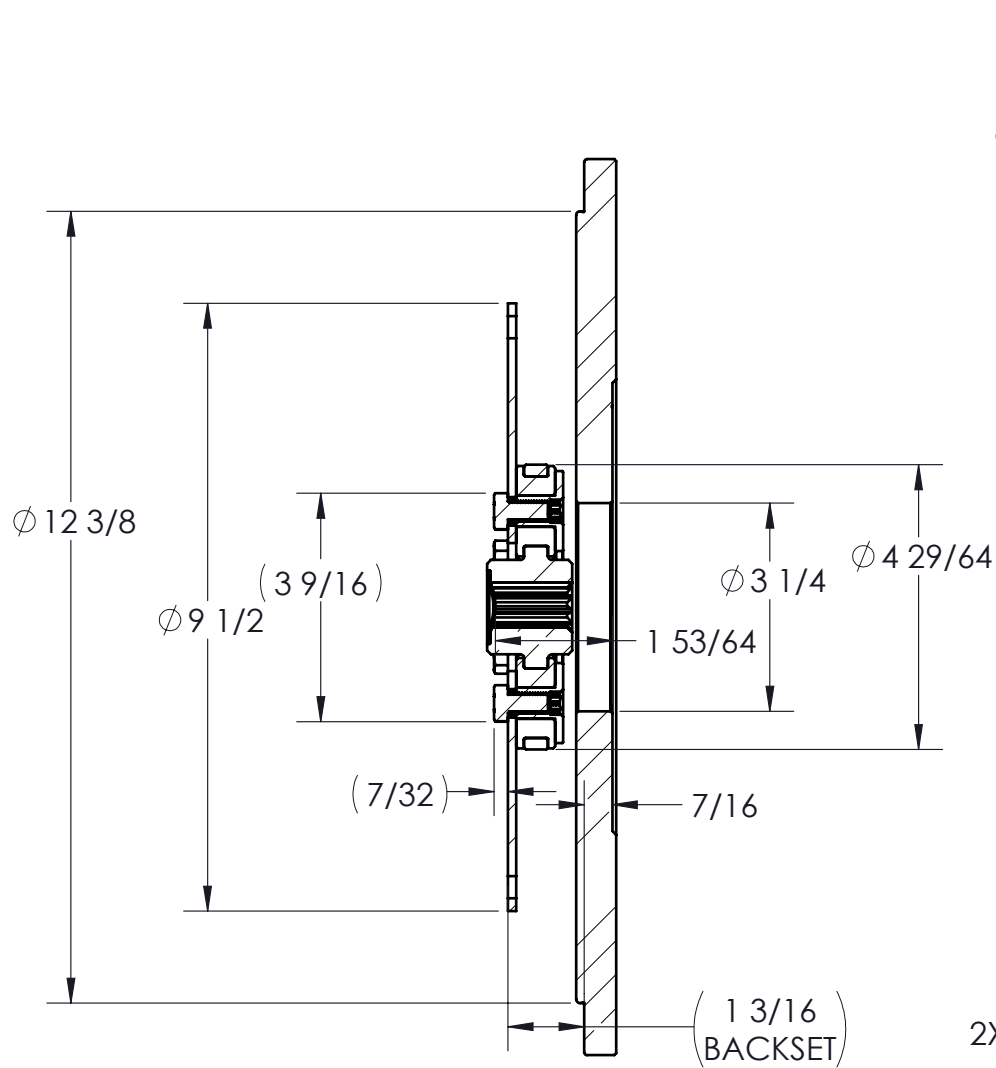
3

2

1

CUSTOMER DRAWING

REVISIONS					
ZONE	REV.	DESCRIPTION	DATE	APR 1	APR 2
	B	UPDATED TO PILOTED BUSHINGS	12/7/2022		



COUPLING IS NOT SERVICABLE

PUMP DRIVE SPECS	
FLYWHEEL	SAE 7.5
HOUSING	SAE 5
PUMP FLANGE	SAE A 2-BOLT
PUMP SHAFT	11T 16/32 "A"
HP RATING (@1800 RPM)	50

PROPRIETARY AND CONFIDENTIAL  
THE INFORMATION CONTAINED IN THIS DRAWING IS THE SOLE PROPERTY OF HAYES MANUFACTURING. ANY REPRODUCTION IN PART OR AS A WHOLE WITHOUT THE WRITTEN PERMISSION OF HAYES MANUFACTURING IS PROHIBITED.

UNLESS OTHERWISE SPECIFIED: DIMENSIONS ARE IN INCHES TOLERANCES: FRACTIONAL: $\pm 1/32$ ANGULAR: MACH $\pm 1/2^\circ$ TWO DECIMAL: $\pm 0.01$ THREE DECIMAL: $\pm 0.005$ FOUR DECIMAL: $\pm 0.0005$		SYMBOLS □ FLATNESS ○ ROUNDNESS // PARALLELISM ∅ DIAMETER "R" RADIUS ⊙ CONCENTRICITY ⊕ TRUE POSITION ⊥ PERPENDICULARITY ↗ CIRCULAR RUN OUT ⌒ TOTAL RUN OUT └─┐ COUNTERBORE ▽ COUNTERSINK ▽ HOLE DEPTH ≡ SYMMETRIC	
CLASS	SAE 7.5		
DESCRIPTION	7-1/2,5,11T16/32,A2,50		
MAKE	X	WEIGHT	28.2 LB
BUY		VOLUME	CU.IN.
		HEAT TREAT	
		FINISH	

ITEM NO.	PART NUMBER	DESCRIPTION	QTY.
1	123338	FLYWHEEL COUPLING ASSEMBLY	1
2	123008-GN2	PUMP MOUNT PLATE	1

	NAME	DATE
DRAWN	VHA	12/7/2022
PCM APPR.		
ENG APPR.		
SHIP. APPR.		
QA APPR.		
MATERIAL		

TITLE: PUMP DRIVE KIT

DWG. NO. 124920

REV B

DO NOT SCALE

SHEET 1 OF 4