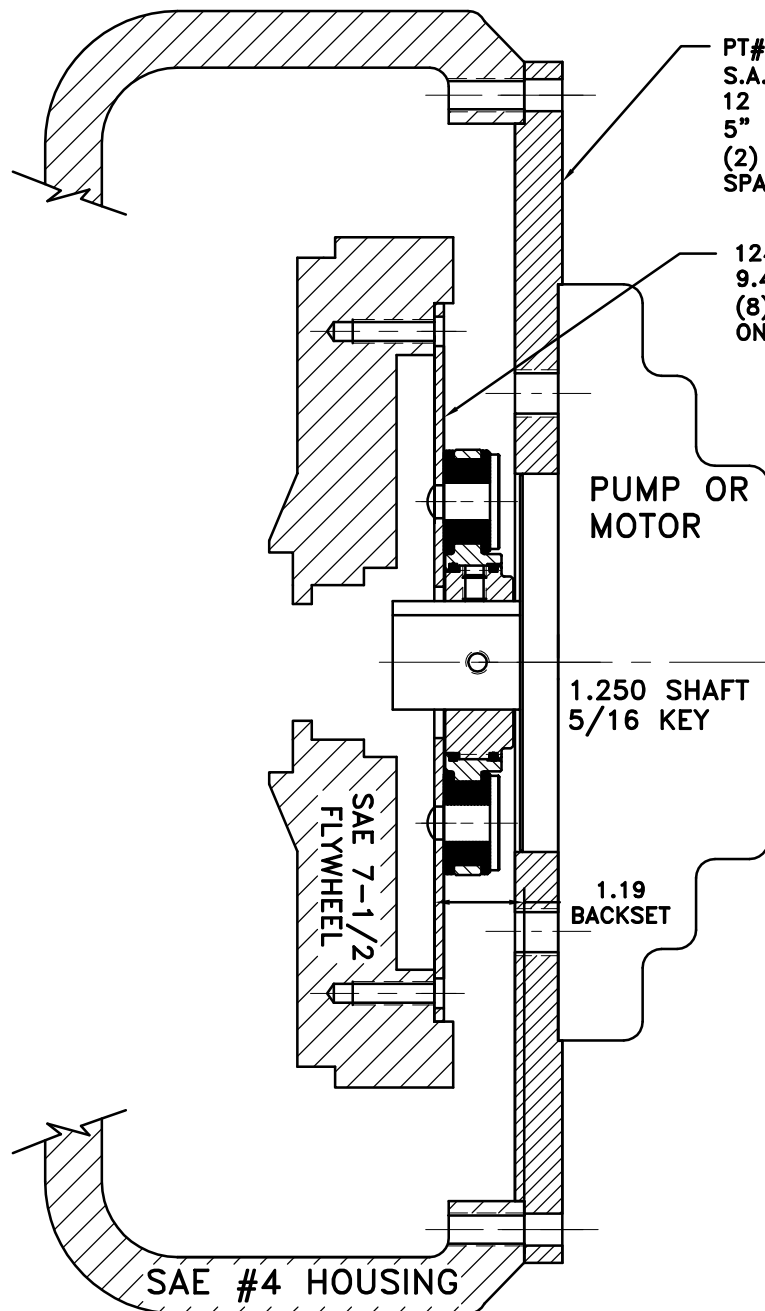


REV	DATE	CHANGE DESCRIPTION	MOD.BY	CK1	CK2
D	11/01/2000	CHANGED EQ2 TO EX2	HAVEMAN		



PT# 123008-EX2
S.A.E. HOUSING MOUNT 27/64 DRILL THRU
12 HOLES EQUALLY SPACED ON 15.00 B.C.
5" PUMP PILOT S.A.E. "C" PUMP MOUNT.
(2) 5/8-11 TAPPED HOLES EQUALLY
SPACED ON 7.125 B.C.

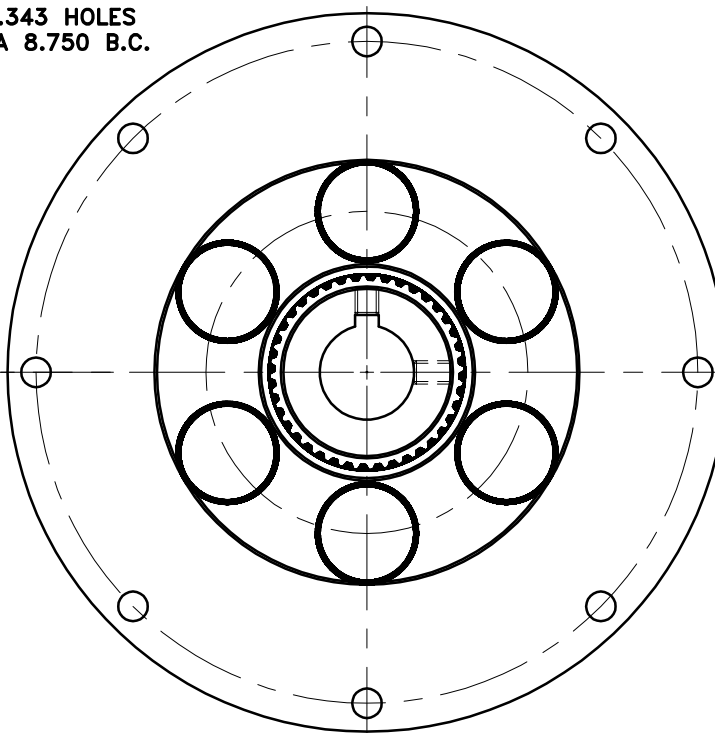
124243-21
9.499 O.D.
(8) .343 HOLES
ON A 8.750 B.C.

PUMP OR
MOTOR

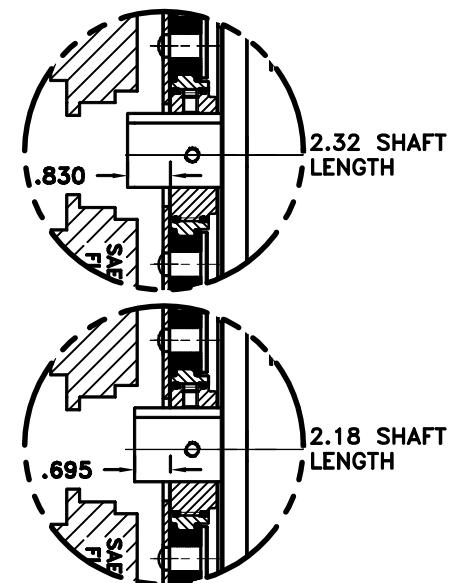
1.250 SHAFT
5/16 KEY

1.19
BACKSET

SAE #4 HOUSING



COUPLING ASS'Y
#124942



NOTE: REMOVE HUB FROM
ASS'Y, PRESET HUB ON
SHAFT & RE- ASSEMBLE
USING NUT & BOLT
GRADE LOC-TITE ON SET
SCREWS

UP TO 50 HP

11	123008-EX2	PUMP MOUNT PLATE	1
10	801912	GREASE	1
9	PURCHASE	5/16-18-3/8 S.S.S.C.P.	1
8	PURCHASE	5/16-18-1/2 S.S.S.C.P.	1
7	568-143	O-RING (124282-02)	1
6	568-142	O-RING (125596-43)	1
5	123206-01	STEEL RIVET	6
4	H52500	NEOPRENE INSERT	6
3	125596-43	EXTERNAL SPLINED HUB	1
2	124282-02	INTERNAL SPLINED ADAPTER	1
1	124243-21	FLYWHEEL PLATE	1

SYMBOLS	DET.	PART NUMBER	DESCRIPTION	QTY.
FLATNESS STRAIGHTNESS ANGULARITY SQUARENESS PARALLELISM CONCENTRICITY TRUE POSITION ROUNDNESS CIRCULAR RUN OUT TOTAL RUN OUT CYLINDRICITY FINISH	DO NOT SCALE DRAWING TOLERANCES UNLESS OTHERWISE SPECIFIED 125 MAXIMUM ANGLE $\pm 1/2^\circ$ FRACTION $\pm 1/32$ DECIMAL .00 \pm .01 .000 \pm .005 .0000 \pm .0005		HAYES MANUFACTURING INC. ® TITLE FLYWHEEL COUPLING ASS'Y MATERIAL	
- UNLESS OTHERWISE SPECIFIED - REMOVE FIRST THREAD ON ALL TAPPED HOLES BREAK ALL SHARP CORNERS .010 TO .020 STAMP OR MARK DRAWING NO.	DRAWN BY HAVEMAN CHECKED BY RJH	DATE 3-6-98 SCALE	DRAWING NO. 124941 SHEET OF REV.	

THIS DRAWING IS THE PROPERTY OF HAYES MFG. INC. AND IS LOANED
SUBJECT TO THE CONDITION THAT IT SHALL NOT BE REPRODUCED,
COPIED, LOANED OR OTHERWISE DISPOSED OF, DIRECTLY OR INDIRECTLY.
IT SHALL BE USED AS A MEANS OF REFERENCE TO WORK FURNISHED BY
THIS COMPANY ONLY AND IS NOT TO BE SUBMITTED TO OUTSIDE PARTIES
FOR EXAMINATION WITHOUT OUR CONSENT.