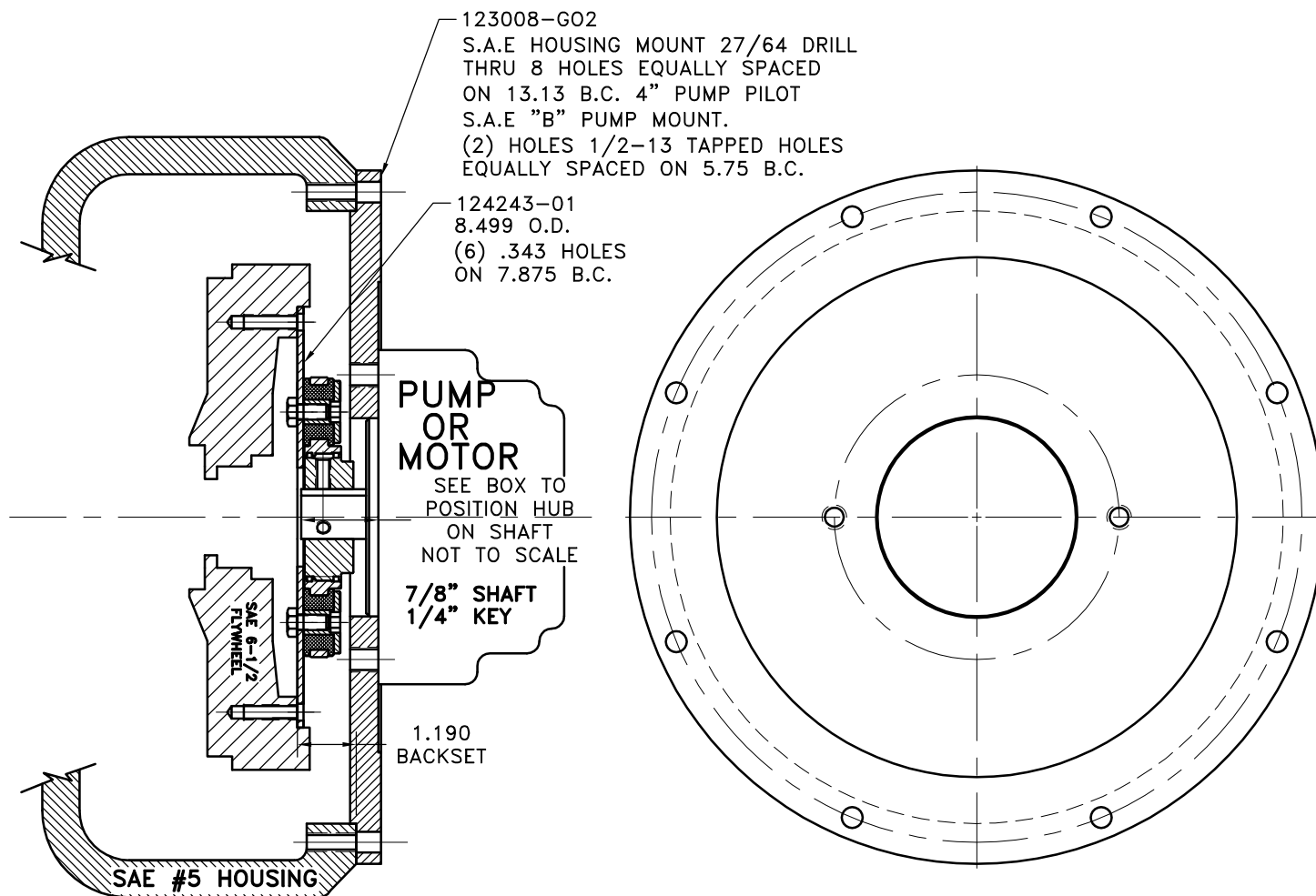
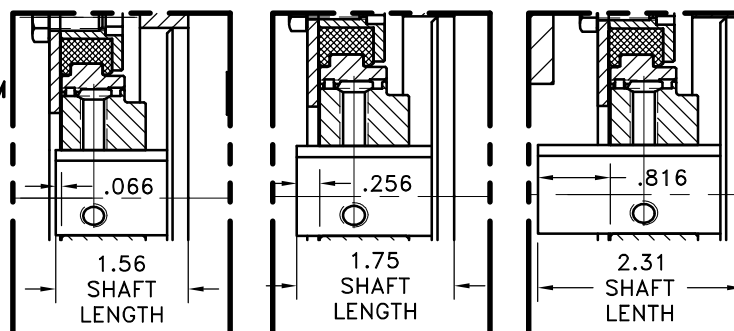


REV	DATE	CHANGE DESCRIPTION	MOD.BY	CK1	CK2
C	02/27/2003	CHANGED TO BOLTED.	ZS	RJH	HM



COUPLING ASS'Y #125204

NOTE: REMOVE HUB FROM ASS'Y, PRESET HUB ON SHAFT & RE- ASSEMBLE USING NUT & BOLT GRADE LOC-TITE ON SET SCREWS



12	123008-G02	PUMP MOUNT PLATE [5]	1
11	PURCHASE	5/16-18 x 5/8\" SSSCP	1
10	PURCHASE	5/16-18 x 1/2\" SSSCP	1
9	801912	GREASE	1
8	568-143	O-RING (124282-02)	1
7	568-142	O-RING (124838-41)	1
6	HX100	5/16-24 x 5/8\" HHB	6
5	123729-01	THREADED BUSHING	6
4	H52500	NEOPRENE INSERT	6
3	124838-41	EXT SPL. HUB	1
2	124282-02	INT SPL. HUB [40 16/32\4.250]	1
1	124243-01	FLYWHEEL PLATE [6.5\4.250]	1

SYMBOLS	DET.	PART NUMBER	DESCRIPTION	QTY.
FLATNESS STRAIGHTNESS ANGULARITY SQUARENESS PARALLELISM CONCENTRICITY TRUE POSITION ROUNDNESS CIRCULAR RUN OUT TOTAL RUN OUT CYLINDRICITY FINISH	DO NOT SCALE DRAWING TOLERANCES UNLESS OTHERWISE SPECIFIED DECIMAL MAXIMUM ANGLE $\pm 1/2^\circ$ FRACTION $\pm 1/32$ DECIMAL .00 \pm .01 .000 \pm .005 .0000 \pm .0005		HAYES MANUFACTURING INC. ® TITLE FLYWHEEL COUPLING ASS'Y WITH PUMP MOUNT PLATE MATERIAL	
- UNLESS OTHERWISE SPECIFIED - REMOVE FIRST THREAD ON ALL TAPPED HOLES BREAK ALL SHARP CORNERS .010 TO .020 STAMP OR MARK DRAWING NO.	DRAWN BY SIETING CHECKED BY RJH	DATE 08-31-95 SCALE	DRAWING NO. 125203 SHEET OF REV.	

THIS DRAWING IS THE PROPERTY OF HAYES MFG. INC. AND IS LOANED SUBJECT TO THE CONDITION THAT IT SHALL NOT BE REPRODUCED, COPIED, LOANED OR OTHERWISE DISPOSED OF, DIRECTLY OR INDIRECTLY. IT SHALL BE USED AS A MEANS OF REFERENCE TO WORK FURNISHED BY THIS COMPANY ONLY AND IS NOT TO BE SUBMITTED TO OUTSIDE PARTIES FOR EXAMINATION WITHOUT OUR CONSENT.