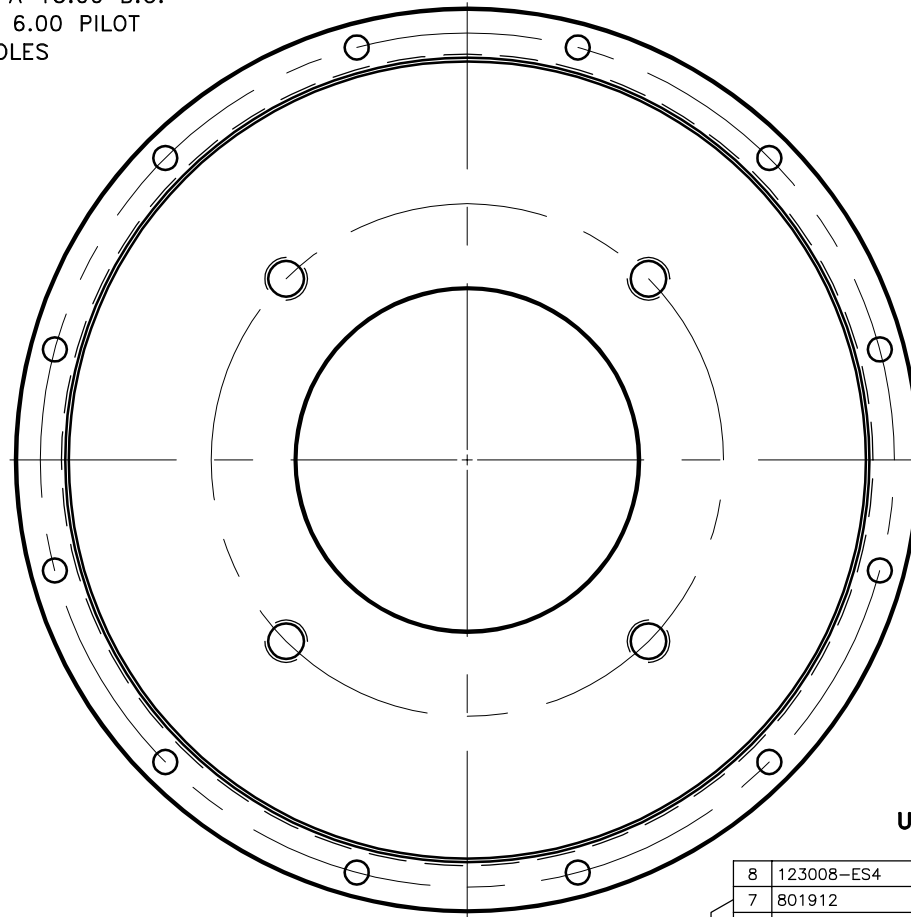
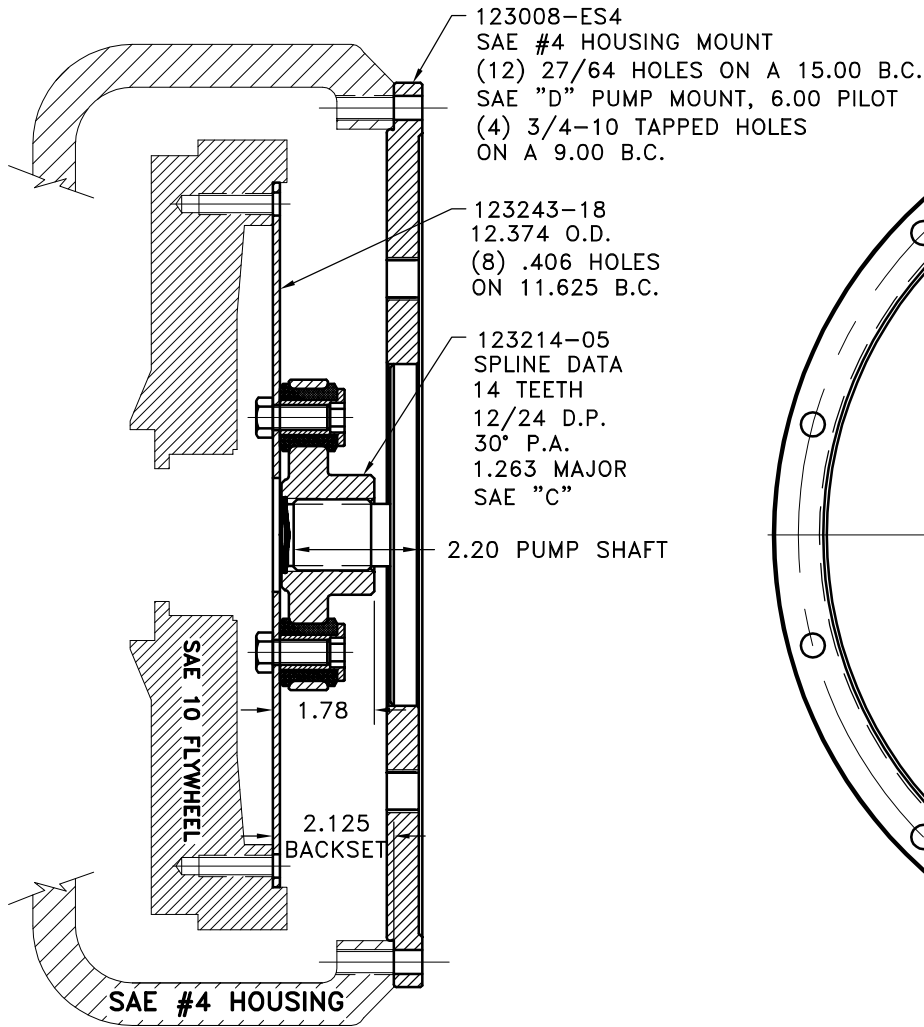


REV	DATE	CHANGE DESCRIPTION	MOD.BY	CK1	CK2
A	08/12/2010	CHANGED TO THREADED INSERTS	PB	RJH	JM



UP TO 110 HP

COUPLING ASS'Y #123822

APPLY SUPPLIED COUPLING GREASE
TO INTERNAL AND EXTERNAL SPLINE
AT ASSEMBLY

QTY.	DESCRIPTION	PART NUMBER	QTY.
1	FLYWHEEL PLATE	123243-18	1
6	NEOPRENE INSERT	H62500	6
6	THREADED BUSHING	123727	6
1	COUPLING HUB	123214-05	1
1	HUBBARD PLUG	HP-1312-S-62	1
1	GREASE	801912	1
1	PUMP MOUNT PLATE	123008-ES4	1

SYMBOLS	DET.	PART NUMBER	DESCRIPTION	QTY.
▨ FLATNESS — STRAIGHTNESS ∠ ANGULARITY ⊥ PERPENDICULARITY ∥ PARALLELISM ⊙ CONCENTRICITY ⊕ TRUE POSITION ○ ROUNDNESS ⊖ CIRCULAR RUN OUT ⊖ TOTAL RUN OUT ⊖ CYLINDRICITY √ FINISH	DO NOT SCALE DRAWING TOLERANCES UNLESS OTHERWISE SPECIFIED 125 MAXIMUM ANGLE ±1/2° FRACTION ±1/32 DECIMAL .00 ±.01 .000 ±.005 .0000 ±.0005		HAYES MANUFACTURING INC. ®	
- UNLESS OTHERWISE SPECIFIED - REMOVE FIRST THREAD ON ALL TAPPED HOLES BREAK ALL SHARP CORNERS .010 TO .020 STAMP OR MARK DRAWING NO.			TITLE FLYWHEEL COUPLING ASS'Y WITH PUMP MOUNT PLATE MATERIAL	DRAWN BY LANNEN DATE 11-02-1998 CHECKED BY SCALE
			DRAWING NO. 125249 SHEET OF REV.	

THIS DRAWING IS THE PROPERTY OF HAYES MFG. INC. AND IS LOANED
SUBJECT TO THE CONDITION THAT IT SHALL NOT BE REPRODUCED,
COPIED, LOANED OR OTHERWISE DISPOSED OF, DIRECTLY OR INDIRECTLY.
IT SHALL BE USED AS A MEANS OF REFERENCE TO WORK FURNISHED BY
THIS COMPANY ONLY AND IS NOT TO BE SUBMITTED TO OUTSIDE PARTIES
FOR EXAMINATION WITHOUT OUR CONSENT.