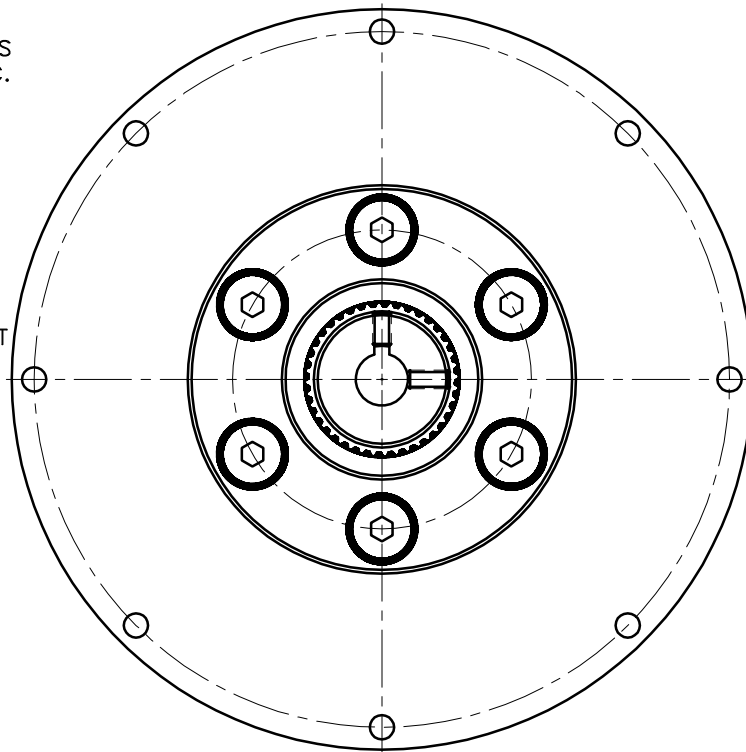
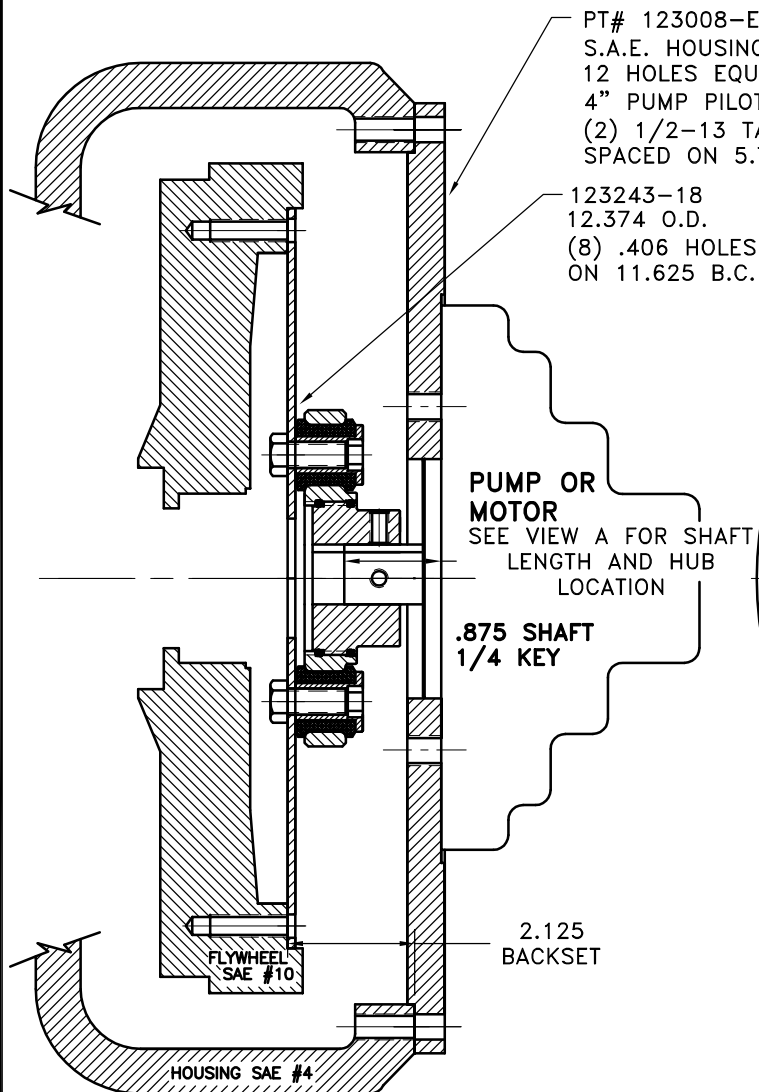
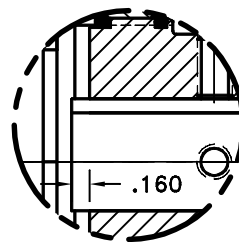
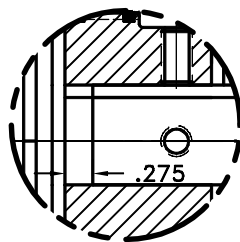
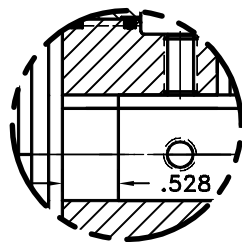


REV	DATE	CHANGE DESCRIPTION	MOD. BY	CK1	CK2
C	04/14/2003	ADDED GREASE	ZS	RJH	HM



COUPLING ASS'Y #124995

NOTE: REMOVE HUB FROM  
ASS'Y, PRESET HUB ON  
SHAFT & RE- ASSEMBLE  
USING NUT & BOLT  
GRADE LOC-TITE ON SET  
SCREWS



12	123008-E02	PUMP MOUNT PLATE	1
11	801912	GREASE	1
10	PURCHASE	5/16-18 x 1/2" SSSCP	1
9	PURCHASE	5/16-18 x 5/8" SSSCP	1
8	HX200	7/16-20 x 1" HHB	6
7	123727	THREADED BUSHING	6
6	H62500	NEOPRENE INSERT	6
5	568-143	O-RING (124473)	1
4	568-142	O-RING (126947-41)	1
3	126947-41	EXTERNAL SPLINED ADAPTER	1
2	124473	INTERNAL SPLINED HUB	1
1	123243-18	FLYWHEEL PLATE	1

SYMBOLS	DET.	PART NUMBER	DESCRIPTION	QTY.
FLATNESS STRAIGHTNESS ANGULARITY SQUARENESS PARALLELISM CONCENTRICITY TRUE POSITION ROUNDNESS CIRCULAR RUN OUT TOTAL RUN OUT CYLINDRICITY FINISH	DO NOT SCALE DRAWING TOLERANCES UNLESS OTHERWISE SPECIFIED 12/31 MAXIMUM ANGLE ±1/2° FRACTION ±1/32 DECIMAL .00 ±.01 .000 ±.005 .0000 ±.0005		<b>HAYES</b> MANUFACTURING INC. ® TITLE FLYWHEEL COUPLING ASSY WITH PUMP MOUNT PLATE MATERIAL	
- UNLESS OTHERWISE SPECIFIED - REMOVE FIRST THREAD ON ALL TAPPED HOLES BREAK ALL SHARP CORNERS .010 TO .020 STAMP OR MARK DRAWING NO.	DRAWN BY SIETING CHECKED BY RJH	DATE 4-27-98 SCALE	DRAWING NO. 125333 SHEET OF REV.	

THIS DRAWING IS THE PROPERTY OF HAYES MFG. INC. AND IS LOANED  
SUBJECT TO THE CONDITION THAT IT SHALL NOT BE REPRODUCED,  
COPIED, LOANED OR OTHERWISE DISPOSED OF, DIRECTLY OR INDIRECTLY.  
IT SHALL BE USED AS A MEANS OF REFERENCE TO WORK FURNISHED BY  
THIS COMPANY ONLY AND IS NOT TO BE SUBMITTED TO OUTSIDE PARTIES  
FOR EXAMINATION WITHOUT OUR CONSENT.