

REV	DATE	CHANGE DESCRIPTION	MOD.BY	CK1	CK2
F	06/19/2013	CHANGED TO THREADED BUSHINGS	ZS	HM	JM

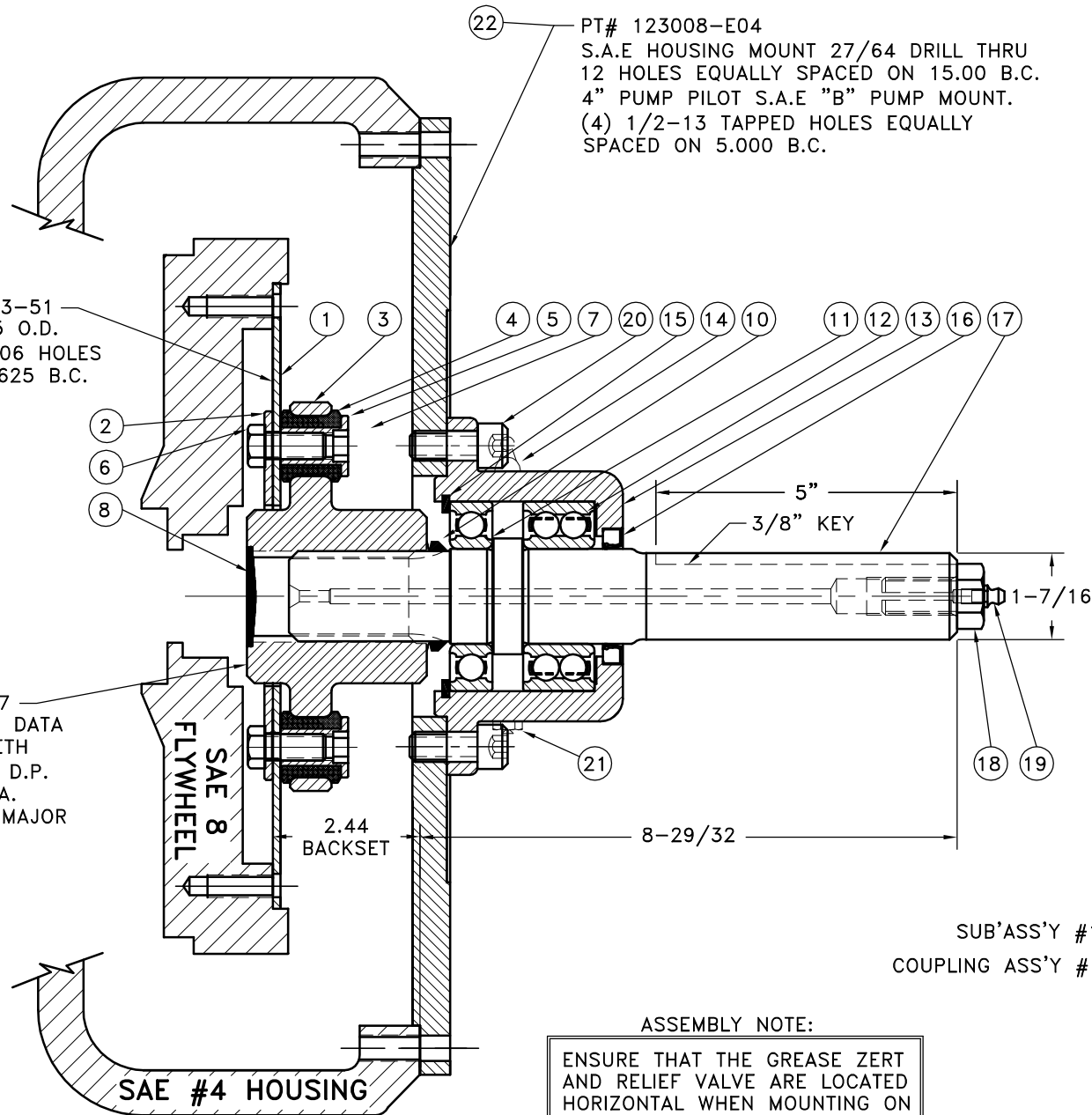
PT# 123008-E04
 S.A.E HOUSING MOUNT 27/64 DRILL THRU
 12 HOLES EQUALLY SPACED ON 15.00 B.C.
 4" PUMP PILOT S.A.E "B" PUMP MOUNT.
 (4) 1/2-13 TAPPED HOLES EQUALLY
 SPACED ON 5.000 B.C.

NOTES:

1. LIGHTLY GREASE INTERNAL AND EXTERNAL AREA OF SPLINE AT ASSEMBLY USING SUPPLIED COUPLING GREASE (OVER GREASING COULD CAUSE A HYDRAULIC TYPE LIFT ON SEALS).
2. **AT ASSEMBLY GREASE BEARING HOUSING UNTIL PIN EXTENDS FROM PRESSURE RELIEF VALVE (LOCATED 180° FROM GREASE ZERT).** USE OF AN UNLEADED EXTREME PRESSURE LITHIUM GREASE, WITH NLGI NO.2 GRADE IS RECOMMENDED. RUN TIME BETWEEN GREASINGS NOT TO EXCEED 2,000 HOURS.
3. **WARNING!!!** INJURY OR DEATH FROM A ROTATING STUB SHAFT CAN OCCUR IF A CONDITION EXISTS WHICH WOULD CAUSE THE SHAFT TO BREAK OR COME APART FROM ANY PART OF THE ASSEMBLY. DEPENDING UPON THE APPLICATION (FOR EXAMPLE, FAN, PULLEY, SHEAVE, ETC.), THE AREA AROUND THE STUB SHAFT MUST BE SUFFICIENTLY GUARDED SO THAT IN THE EVENT OF FAILURE, THE GUARD WILL CONTAIN ANY AIRBORNE PARTS.

124243-51
 10.375 O.D.
 (6) .406 HOLES
 ON 9.625 B.C.

125717
 SPLINE DATA
 14 TEETH
 10/20 D.P.
 30° P.A.
 1.512 MAJOR



SUB'ASS'Y #125722
 COUPLING ASS'Y #125898

ASSEMBLY NOTE:

ENSURE THAT THE GREASE ZERT
 AND RELIEF VALVE ARE LOCATED
 HORIZONTAL WHEN MOUNTING ON
 TO PUMP MOUNT PLATE.

REPLACES PN 125282

21	123008-E04	PUMP MOUNT PLATE	1
20	1093K11	RELIEF VALVE	1
19	740000	1/2-13x1-1/8 SHCS	4
18	609000	GREASE ZERT	1
17	125294	SPECIAL 5/8-11 HHB	1
16	125721	SPLINED SHAFT	1
15	CRW1 R 15830	SEAL	1
14	RR-314	SNAP RING	1
13	600000	GREASE ZERT	1
12	125007	BEARING HOUSING	1
11	5208WD	DOUBLE BEARING	1
10	208P	BEARING	1
9	400401	V-RING	1
8	801912	GREASE	1
7	R-0017-02	GREASE PLUG	1
6	BOLT	7/16-20x1 HHB Y D	10
5	123727	THREADED BUSHING	10
4	H62500	NEOPRENE INSERT	10
3	125717	COUPLING HUB	1
2	124657-03	BACKING PLATE	1
1	124243-51	FLYWHEEL PLATE	1

THIS DRAWING IS THE PROPERTY OF HAYES MFG. INC. AND IS LOANED
 SUBJECT TO THE CONDITION THAT IT SHALL NOT BE REPRODUCED,
 COPIED, LOANED OR OTHERWISE DISPOSED OF, DIRECTLY OR INDIRECTLY.
 IT SHALL BE USED AS A MEANS OF REFERENCE TO WORK FURNISHED BY
 THIS COMPANY ONLY AND IS NOT TO BE SUBMITTED TO OUTSIDE PARTIES
 FOR EXAMINATION WITHOUT OUR CONSENT.

SYMBOLS	DET.	PART NUMBER	DESCRIPTION	QTY.
FLATNESS STRAIGHTNESS ANGULARITY PERPENDICULARITY PARALLELISM CONCENTRICITY TRUE POSITION ROUNDNESS CIRCULAR RUN OUT TOTAL RUN OUT CYLINDRICITY FINISH	DO NOT SCALE DRAWING TOLERANCES UNLESS OTHERWISE SPECIFIED .125 MAXIMUM ANGLE ±1/2° FRACTION ±1/32 DECIMAL .00 ±.01 .000 ±.005 .0000 ±.0005	MAKE: <input type="checkbox"/> BUY: <input type="checkbox"/>	HAYES MANUFACTURING INC. ® TITLE BEARING SUPPORTED STUB SHAFT ASS'Y MATERIAL	125715 SHEET OF REV.
CLASS	DESCRIPTION	DRAWN BY HAYEMAN	DATE 7-31-00	DRAWING NO. 125715
		CHECKED BY	SCALE	