

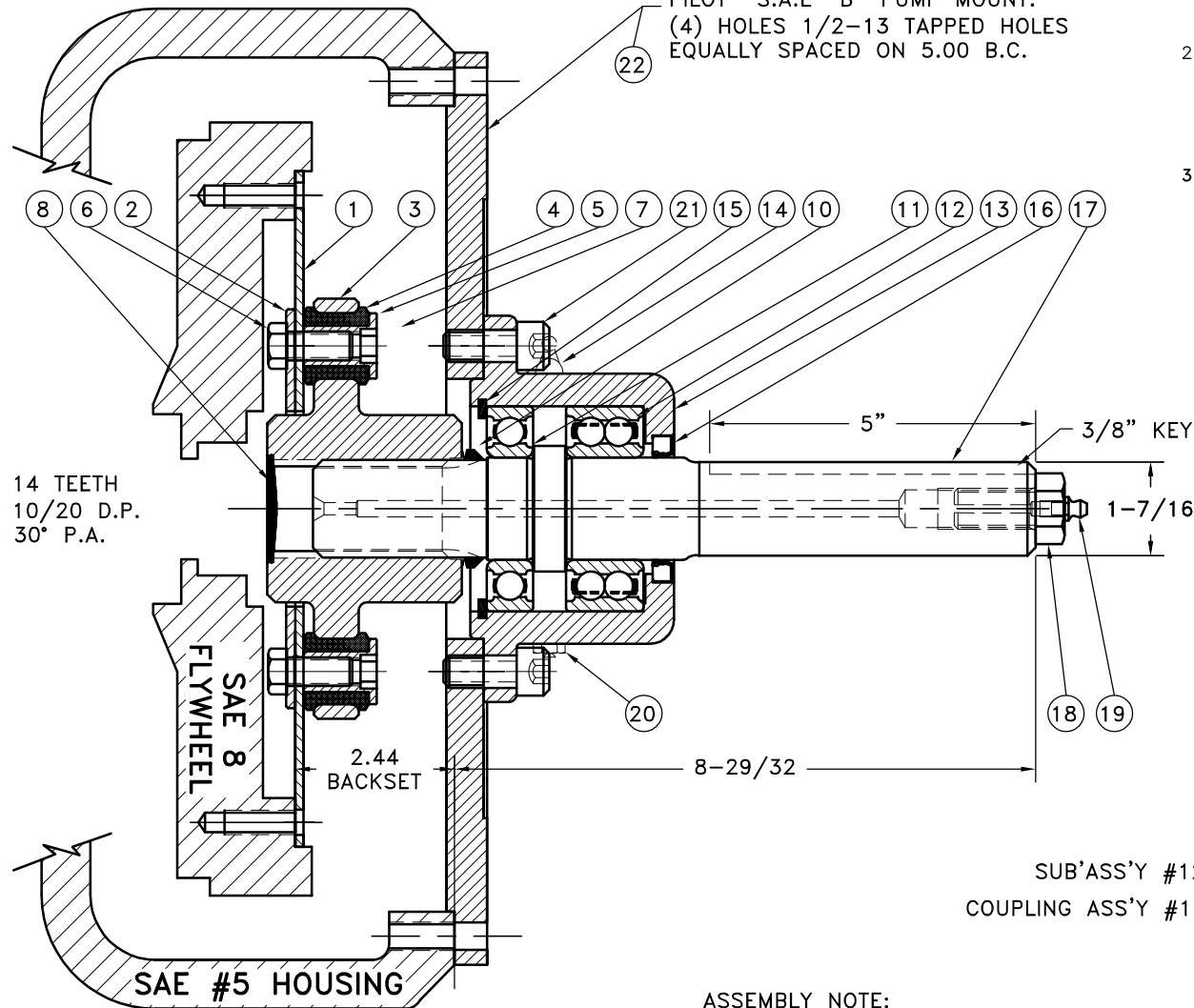
REV	DATE	CHANGE DESCRIPTION	MOD. BY	CK1	CK2
F	06/19/2013	CHANGED TO THREADED BUSHINGS	ZS	HM	JM

123008-G04

S.A.E HOUSING MOUNT 27/64
DRILL THRU 8 HOLES EQUALLY
SPACED ON 13.13 B.C. 4" PUMP
PILOT S.A.E "B" PUMP MOUNT.
(4) HOLES 1/2-13 TAPPED HOLES
EQUALLY SPACED ON 5.00 B.C.

NOTES:

1. LIGHTLY GREASE INTERNAL AND EXTERNAL AREA OF SPLINE AT ASSEMBLY USING SUPPLIED COUPLING GREASE (OVER GREASING COULD CAUSE A HYDRAULIC TYPE LIFT ON SEALS).
2. **AT ASSEMBLY GREASE BEARING HOUSING UNTIL PIN EXTENDS FROM PRESSURE RELIEF VALVE (LOCATED 180° FROM GREASE ZERT).** USE OF AN UNLEADED EXTREME PRESSURE LITHIUM GREASE, WITH NLGI NO.2 GRADE IS RECOMMENDED. RUN TIME BETWEEN GREASINGS NOT TO EXCEED 2,000 HOURS.
3. **WARNING!!!** INJURY OR DEATH FROM A ROTATING STUB SHAFT CAN OCCUR IF A CONDITION EXISTS WHICH WOULD CAUSE THE SHAFT TO BREAK OR COME APART FROM ANY PART OF THE ASSEMBLY. DEPENDING UPON THE APPLICATION (FOR EXAMPLE, FAN, PULLEY, SHEAVE, ETC.), THE AREA AROUND THE STUB SHAFT MUST BE SUFFICIENTLY GUARDED SO THAT IN THE EVENT OF FAILURE, THE GUARD WILL CONTAIN ANY AIRBORNE PARTS.



SUB'ASS'Y #125722
COUPLING ASS'Y #125898

ASSEMBLY NOTE:

ENSURE THAT THE GREASE ZERT AND RELIEF VALVE ARE LOCATED HORIZONTAL WHEN MOUNTING ON TO PUMP MOUNT PLATE.

21	123008-G04	PUMP MOUNT PLATE	1
20	740000	1/2-13x1-1/8 SHCS	4
19	1093K11	RELIEF VALVE	1
18	609000	GREASE ZERT	1
17	125294	SPECIAL 5/8-11 HHB	1
16	125721	SPLINED SHAFT	1
15	CRW1 R 15830	SEAL	1
14	RR-314	SNAP RING	1
13	600000	GREASE ZERT	1
12	125007	BEARING HOUSING	1
11	5208WD	DOUBLE BEARING	1
10	208P	BEARING	1
9	400401	V-RING	1
8	801912	GREASE	1
7	R-0017-02	GREASE PLUG	1
6	BOLT	7/16-20x1 HHB Y D	10
5	123727	THREADED BUSHING	10
4	H62500	NEOPRENE INSERT	10
3	125717	COUPLING HUB	1
2	124657-03	BACKING PLATE	1
1	124243-51	FLYWHEEL PLATE	1

THIS DRAWING IS THE PROPERTY OF HAYES MFG. INC. AND IS LOANED SUBJECT TO THE CONDITION THAT IT SHALL NOT BE REPRODUCED, COPIED, LOANED OR OTHERWISE DISPOSED OF, DIRECTLY OR INDIRECTLY. IT SHALL BE USED AS A MEANS OF REFERENCE TO WORK FURNISHED BY THIS COMPANY ONLY AND IS NOT TO BE SUBMITTED TO OUTSIDE PARTIES FOR EXAMINATION WITHOUT OUR CONSENT.

SYMBOLS	DET.	PART NUMBER	DESCRIPTION	QTY.
FLATNESS STRAIGHTNESS ANGULARITY PERPENDICULARITY PARALLELISM CONCENTRICITY TRUE POSITION ROUNDNESS CIRCULAR RUN OUT TOTAL RUN OUT CYLINDRICITY FINISH	DO NOT SCALE DRAWING TOLERANCES UNLESS OTHERWISE SPECIFIED .125" MAXIMUM ANGLE ±1/2° FRACTION ±1/32 DECIMAL .00 ±.01 .000 ±.005 .0000 ±.0005	MAKE: <input type="checkbox"/> BUY: <input type="checkbox"/>	HAYES MANUFACTURING INC. ® TITLE BEARING SUPPORTED STUB SHAFT ASS'Y MATERIAL	CLASS DESCRIPTION
		DRAWN BY HAVEMAN	DATE 8-1-00	DRAWING NO. 125720
		CHECKED BY SCALE		SHEET OF REV.