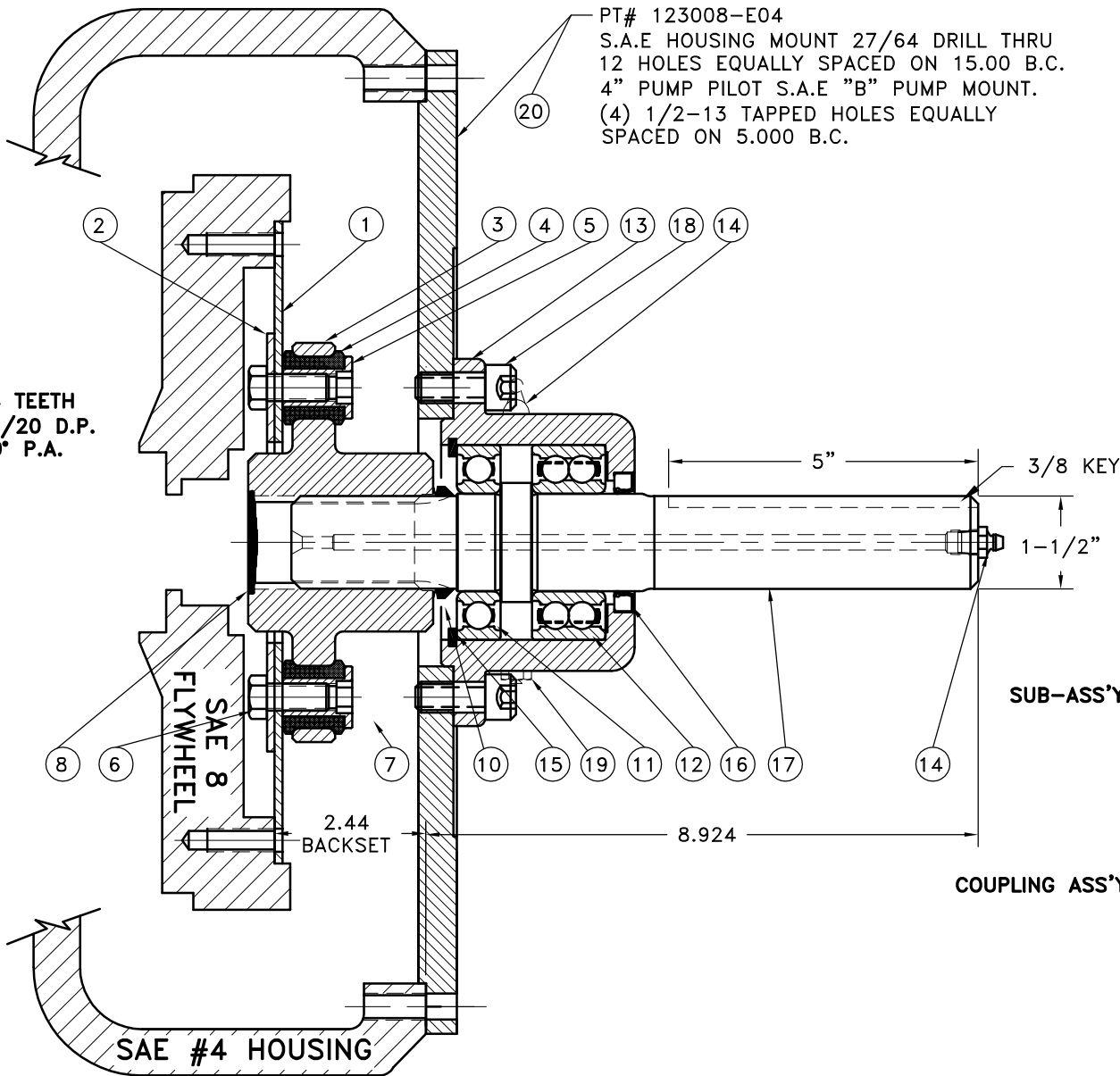


REV	DATE	CHANGE DESCRIPTION	MOD.BY	CK1	CK2
F	06/19/2013	CHANGED TO THREADED BUSHINGS	ZS	HM	JM



PT# 123008-E04  
 S.A.E HOUSING MOUNT 27/64 DRILL THRU  
 12 HOLES EQUALLY SPACED ON 15.00 B.C.  
 4" PUMP PILOT S.A.E "B" PUMP MOUNT.  
 (4) 1/2-13 TAPPED HOLES EQUALLY  
 SPACED ON 5.000 B.C.

14 TEETH  
 10/20 D.P.  
 30° P.A.

**NOTES:**

- LIGHTLY GREASE INTERNAL AND EXTERNAL AREA OF SPLINE AT ASSEMBLY USING SUPPLIED COUPLING GREASE (OVER GREASING COULD CAUSE A HYDRAULIC TYPE LIFT ON SEALS).
- AT ASSEMBLY GREASE BEARING HOUSING UNTIL PIN EXTENDS FROM PRESSURE RELIEF VALVE (LOCATED 180° FROM GREASE ZERK).** USE OF AN UNLEADED EXTREME PRESSURE LITHIUM GREASE, WITH NLGI NO.2 GRADE IS RECOMMENDED. RUN TIME BETWEEN GREASINGS NOT TO EXCEED 2,000 HOURS.
- WARNING!!!** INJURY OR DEATH FROM A ROTATING STUB SHAFT CAN OCCUR IF A CONDITION EXISTS WHICH WOULD CAUSE THE SHAFT TO BREAK OR COME APART FROM ANY PART OF THE ASSEMBLY. DEPENDING UPON THE APPLICATION (FOR EXAMPLE, FAN, PULLEY, SHEAVE, ETC.), THE AREA AROUND THE STUB SHAFT MUST BE SUFFICIENTLY GUARDED SO THAT IN THE EVENT OF FAILURE, THE GUARD WILL CONTAIN ANY AIRBORNE PARTS.

**ASSEMBLY NOTE:**

ENSURE THAT THE GREASE ZERT AND RELIEF VALVE ARE LOCATED HORIZONTAL WHEN MOUNTING ON TO PUMP MOUNT PLATE.

**REF: REPLACES 125901**

QTY	DESCRIPTION	PART NUMBER
1	FLYWHEEL PLATE	124243-51
1	BACKING PLATE	124657-03
1	COUPLING HUB	125717
10	NEOPRENE INSERT	H62500
10	THREADED BUSHING	7/16-20x1 HHB Y D
1	GREASE PLUG	R-0017-02
1	GREASE	801912
1	V-RING	400401
1	BEARING	208P
1	DOUBLE BEARING	5208WD
1	BEARING HOUSING	125007
2	GREASE ZERT	600000
1	SNAP RING	RR-314
1	SEAL	15830
1	SPLINED SHAFT	125723
4	1/2-13x1-1/8 SHCS D BOLT	17
1	RELIEF VALVE	1093K11
1	PUMP MOUNT PLATE	123008-E04

SUB-ASS'Y #125724

COUPLING ASS'Y #125898

THIS DRAWING IS THE PROPERTY OF HAYES MFG. INC. AND IS LOANED SUBJECT TO THE CONDITION THAT IT SHALL NOT BE REPRODUCED, COPIED, LOANED OR OTHERWISE DISPOSED OF, DIRECTLY OR INDIRECTLY. IT SHALL BE USED AS A MEANS OF REFERENCE TO WORK FURNISHED BY THIS COMPANY ONLY AND IS NOT TO BE SUBMITTED TO OUTSIDE PARTIES FOR EXAMINATION WITHOUT OUR CONSENT.

REF: 3" SHAFT ASS'Y SEE 126207

SYMBOLS	DET.	PART NUMBER	DESCRIPTION	QTY.
——— FLATNESS ——— STRAIGHTNESS ——— ANGULARITY ⊥ PERPENDICULARITY ∥ PARALLELISM ⊙ CONCENTRICITY ⊕ TRUE POSITION ○ ROUNDNESS Ⓢ CIRCULAR RUN OUT Ⓣ TOTAL RUN OUT Ⓜ CYLINDRICITY ✓ FINISH	DO NOT SCALE DRAWING TOLERANCES UNLESS OTHERWISE SPECIFIED 125 MAXIMUM ANGLE ±1/2° FRACTION ±1/32 DECIMAL .00 ±.01 .000 ±.005 .0000 ±.0005		<b>HAYES</b> MANUFACTURING INC. ® <b>TITLE</b> BEARING SUPPORTED STUB SHAFT ASSY <b>MATERIAL</b>	
CLASS	MAKE: <input type="checkbox"/> BUY: <input type="checkbox"/>	DRAWN BY HAVEMAN	DATE 8-7-00	DRAWING NO. 125733
DESCRIPTION		CHECKED BY	SCALE	SHEET OF REV.