

5

4

3

2

1

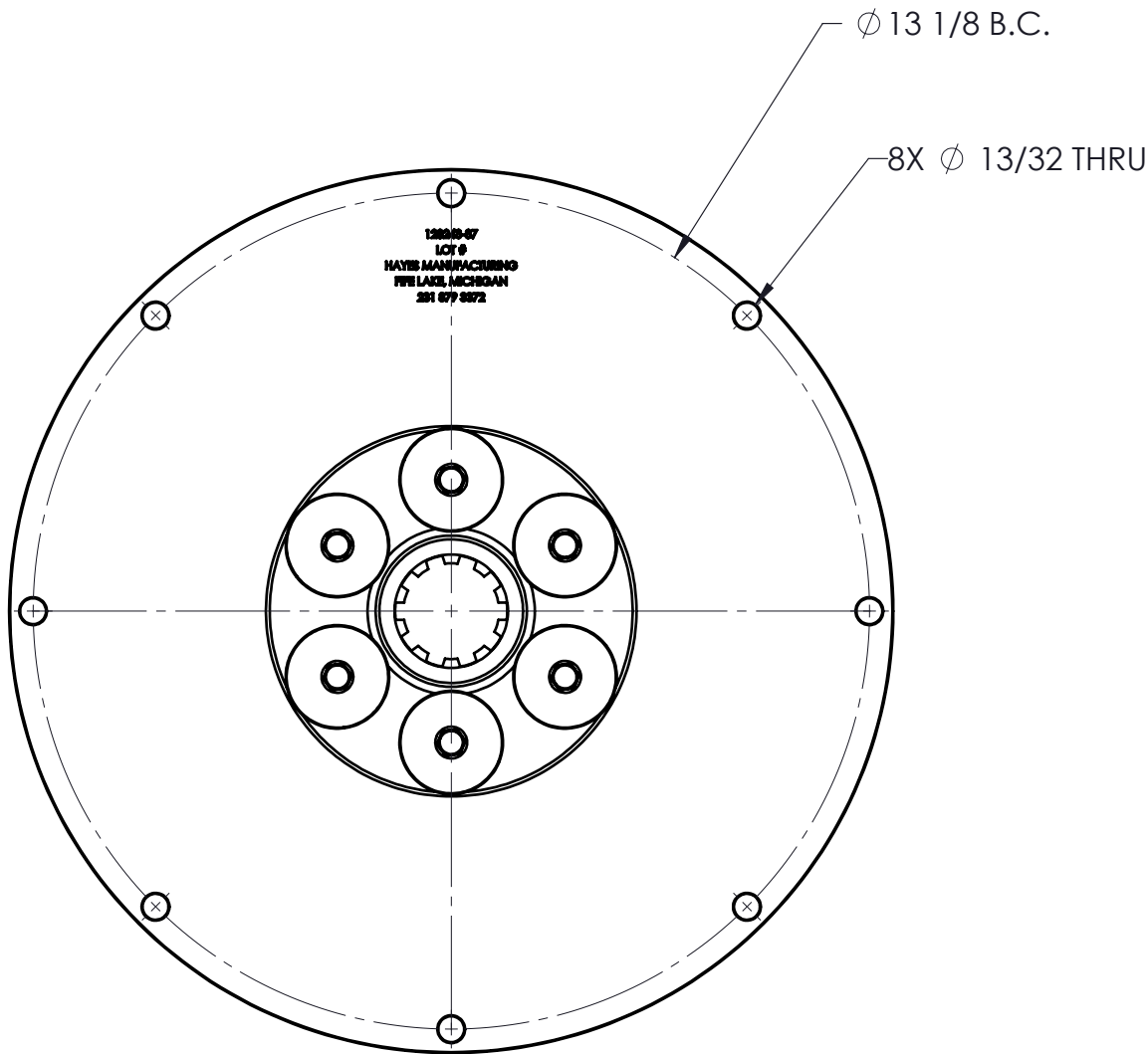
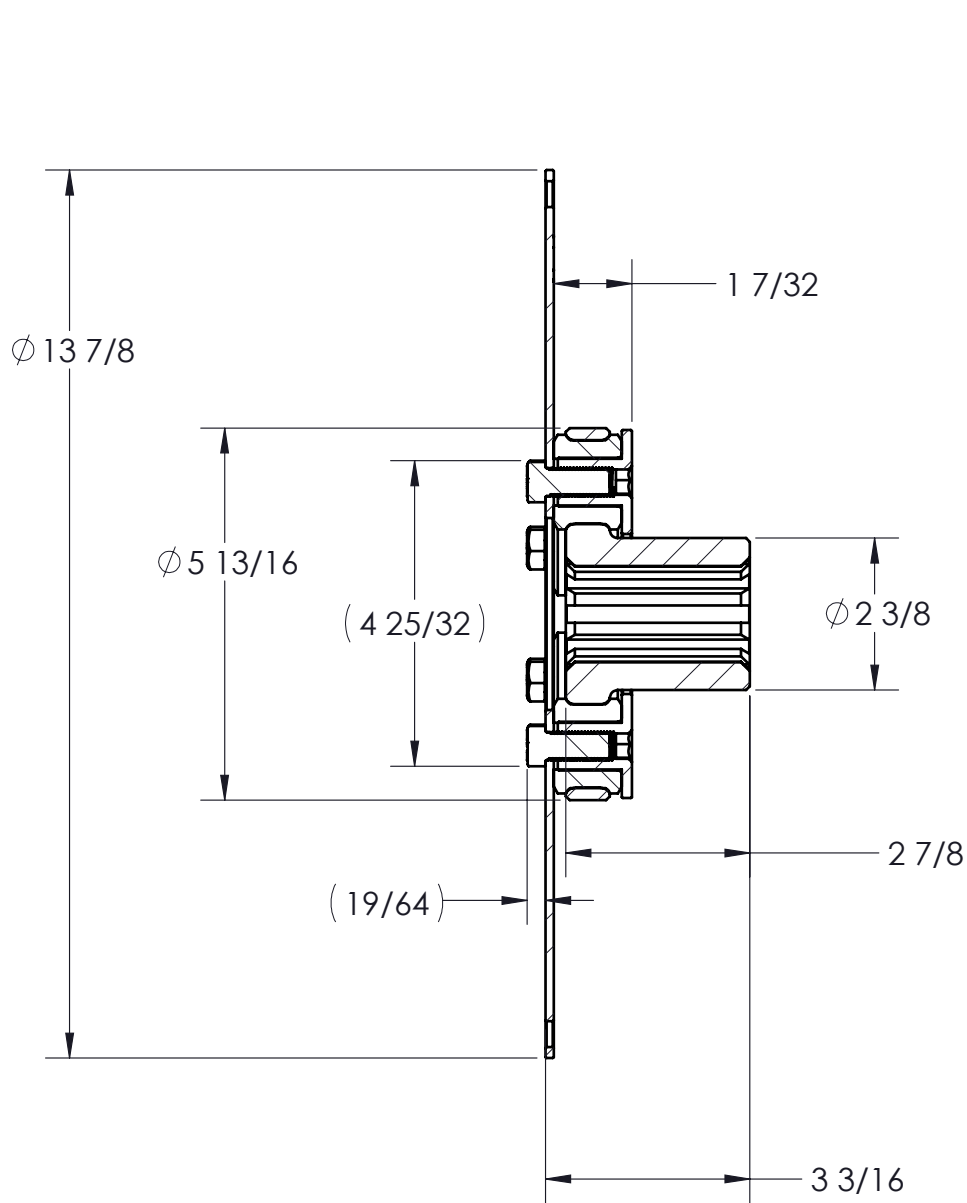
CUSTOMER DRAWING

REVISIONS					
ZONE	REV.	DESCRIPTION	DATE	APR 1	APR 2
	A	RELEASED IN SOLIDWORKS	12/13/2021	ZS	JM

D

C

B



D

C


B

COUPLING IS NOT SERVICEABLE

A

PUMP DRIVE SPECS	
FLYWHEEL	SAE 11.5
PUMP SHAFT	10T 1-3/4B
HP RATING (@1800 RPM)	110

PROPRIETARY AND CONFIDENTIAL  
THE INFORMATION CONTAINED IN THIS  
DRAWING IS THE SOLE PROPERTY OF  
HAYES MANUFACTURING. ANY  
REPRODUCTION IN PART OR AS A WHOLE  
WITHOUT THE WRITTEN PERMISSION OF  
HAYES MANUFACTURING IS PROHIBITED.

UNLESS OTHERWISE SPECIFIED: DIMENSIONS ARE IN INCHES TOLERANCES: FRACTIONAL ± 1/32 ANGULAR: MACH ± 1/2° TWO DECIMAL ±.01 THREE DECIMAL ±.005 FOUR DECIMAL ±.0005		SYMBOLS <div>□ FLATNESS    ⊙ CONCENTRICITY    ∩ COUNTERBORE ○ ROUNDNESS    ⊕ TRUE POSITION    ∇ COUNTERSINK // PARALLELISM    ⊥ PERPENDICULARITY    ≡ SYMMETRIC ∅ DIAMETER    ↗ CIRCULAR RUN OUT "R" RADIUS    ↘ TOTAL RUN OUT</div>		NAME JESSE		DATE 2/13/2021			
DRAWN		JESSE		2/13/2021					
PCM APPR.		HM		2/15/2021					
ENG APPR.		ZS		2/14/2021					
SHIP. APPR.		ZE		2/14/2021		TITLE: FLYWHEEL COUPLING			
QA APPR.		JM		2/13/2021					
CLASS SAE 11.5		DESCRIPTION 11-1/2,1-3/4-10B,3.187,110		MATERIAL		DWG. NO. 125788			
MAKE X		WEIGHT 11.3 LB		HEAT TREAT					
BUY		VOLUME CU.IN.		FINISH					
						DO NOT SCALE		SHEET 1 OF 4	