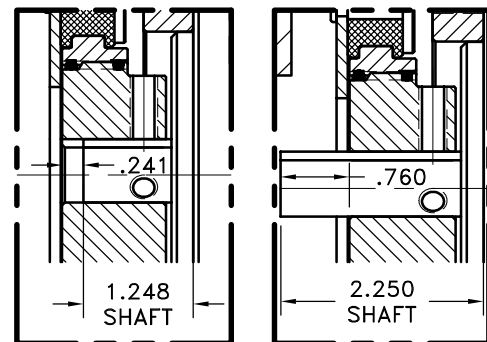
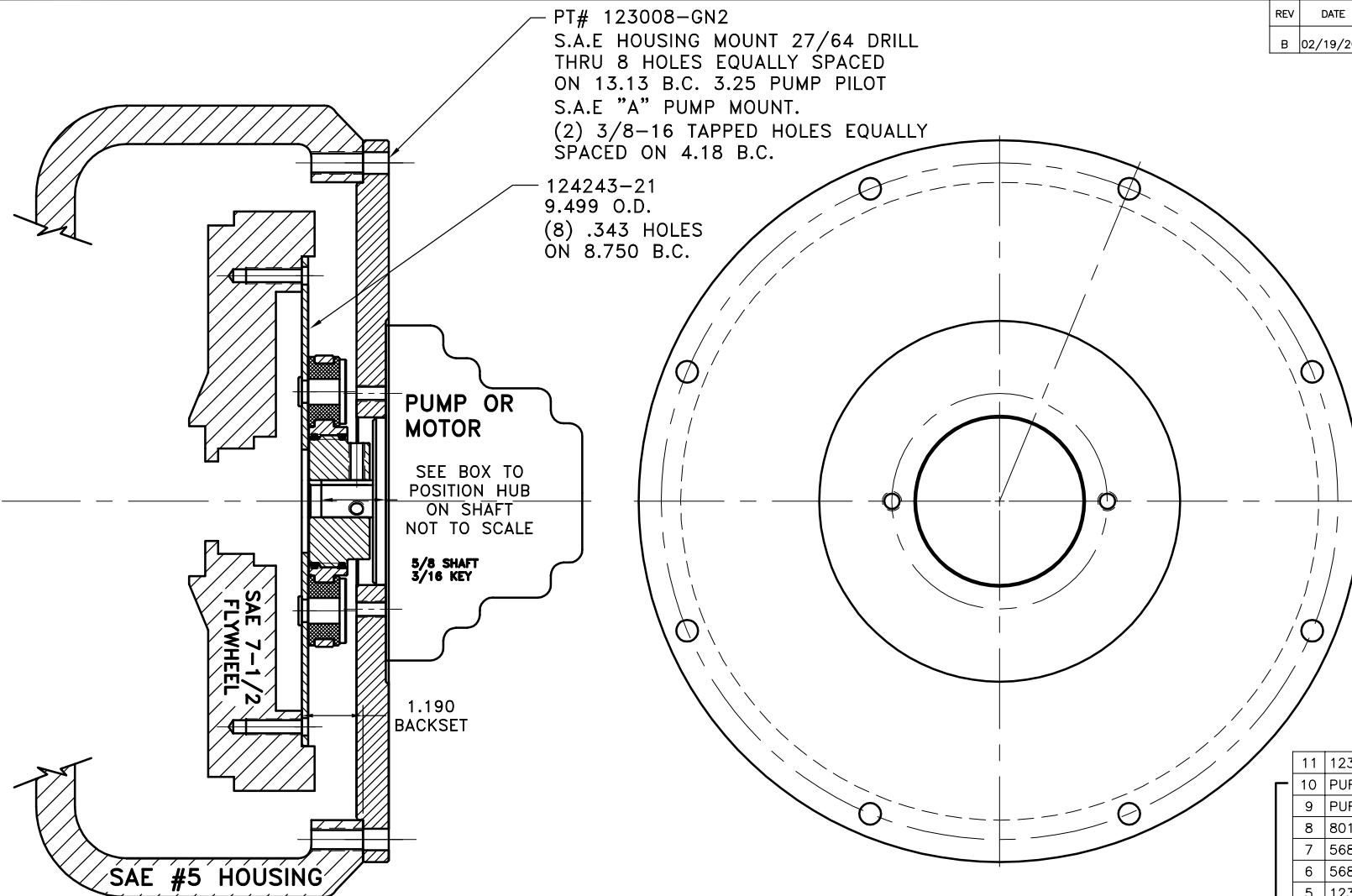


| REV | DATE       | CHANGE DESCRIPTION       | MOD. BY | CK1 | CK2 |
|-----|------------|--------------------------|---------|-----|-----|
| B   | 02/19/2003 | ADDED 2.250 SHAFT LENGTH | ZS      | RJH | HM  |



**NOTE: REMOVE HUB FROM ASS'Y, PRESET HUB ON SHAFT & RE-ASSEMBLE USING NUT & BOLT GRADE LOC-TITE ON SET SCREWS**

THIS DRAWING IS THE PROPERTY OF HAYES MFG. INC. AND IS LOANED SUBJECT TO THE CONDITION THAT IT SHALL NOT BE REPRODUCED, COPIED, LOANED OR OTHERWISE DISPOSED OF, DIRECTLY OR INDIRECTLY. IT SHALL BE USED AS A MEANS OF REFERENCE TO WORK FURNISHED BY THIS COMPANY ONLY AND IS NOT TO BE SUBMITTED TO OUTSIDE PARTIES FOR EXAMINATION WITHOUT OUR CONSENT.

**COUPLING ASS'Y  
#125534**

|    |            |                         |   |
|----|------------|-------------------------|---|
| 11 | 123008-GN2 | PUMP MOUNT PLATE        | 1 |
| 10 | PURCHASE   | 5/16-18x3/4 SSSCP       | 1 |
| 9  | PURCHASE   | 5/16-18x3/4 SSSCP       | 1 |
| 8  | 801912     | GREASE                  | 1 |
| 7  | 568-143    | O-RING (124282-02)      | 1 |
| 6  | 568-142    | O-RING (124284-05)      | 1 |
| 5  | 123206-01  | STEEL RIVET             | 6 |
| 4  | H52500     | NEOPRENE INSERT         | 6 |
| 3  | 124284-05  | EXTERNAL SPLINED HUB    | 1 |
| 2  | 124282-02  | INTERNAL SPLINED FLANGE | 1 |
| 1  | 124243-21  | FLYWHEEL PLATE          | 1 |

| SYMBOLS   | DET.  | PART NUMBER  | DESCRIPTION                               | QTY.  |
|---|---|--|---|---|
| FLATNESS<br>STRAIGHTNESS<br>ANGULARITY<br>SQUARENESS<br>PARALLELISM<br>CONCENTRICITY<br>TRUE POSITION<br>ROUNDNESS<br>CIRCULAR RUN OUT<br>TOTAL RUN OUT<br>CYLINDRICITY<br>FINISH | DO NOT SCALE<br>DRAWING<br>TOLERANCES UNLESS OTHERWISE SPECIFIED<br>1/32" MAXIMUM<br>ANGLE ±1/2°<br>FRACTION ±1/32<br>DECIMAL<br>.00 ±.01<br>.000 ±.005<br>.0000 ±.0005 | <b>HAYES</b><br>MANUFACTURING INC. ®<br>TITLE<br>FLYWHEEL COUPLING ASS'Y W/ PUMP MOUNT PLATE<br>MATERIAL | DRAWN BY<br>MAYCROFT<br>CHECKED BY<br>RJH | DATE<br>2-24-00<br>SCALE<br>DRAWING NO.<br><b>125831</b><br>SHEET OF REV. |

UNLESS OTHERWISE SPECIFIED -  
REMOVE FIRST THREAD  
ON ALL TAPPED HOLES  
BREAK ALL SHARP CORNERS .010 TO .020  
STAMP OR MARK DRAWING NO.