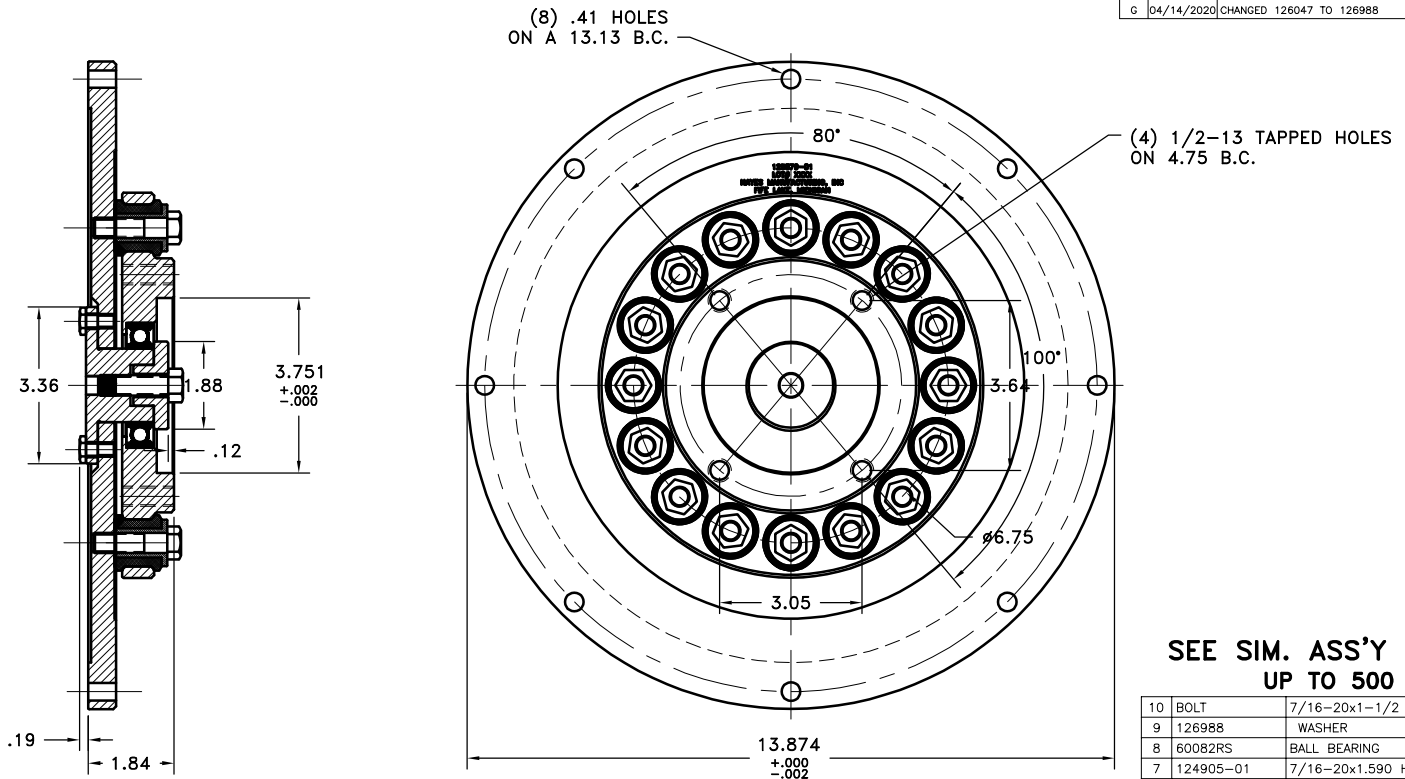


REV	DATE	CHANGE DESCRIPTION	MOD.BY	CK1	CK2
G	04/14/2020	CHANGED 126047 TO 126988	JESSE	JM	HM



FOR SPICER 1480 U-JOINT ADAPTER  
& SAE 11-1/2

ASSEMBLY #  
126831  
FLYWHEEL PLATE ASSY  
#128721

SEE SIM. ASS'Y #126563  
UP TO 500 HP

10	BOLT	7/16-20x1-1/2 HHB	1
9	126988	WASHER	1
8	60082RS	BALL BEARING	1
7	124905-01	7/16-20x1.590 HHB Y D	16
6	123000-00	STEEL BUSHING	16
5	H62500	NEOPRENE INSERT	16
4	125887	COUPLING HUB	1
3	HX300	5/16-24x5/8 HHB Y D	6
2	129998	PILOT	1
1	125879-01	FLYWHEEL PLATE	1

SYMBOLS	DET.	PART NUMBER	DESCRIPTION	QTY.
FLATNESS STRAIGHTNESS ANGULARITY PERPENDICULARITY PARALLELISM CONCENTRICITY TRUE POSITION ROUNDNESS CIRCULAR RUN OUT TOTAL RUN OUT CYLINDRICITY FINISH	DO NOT SCALE DRAWING TOLERANCES UNLESS OTHERWISE SPECIFIED 1/32" MAXIMUM ANGLE ±1/2° FRACTION ±1/32 DECIMAL .00 ±.01 .000 ±.005 .0000 ±.0005		<b>HAYES</b> MANUFACTURING INC. ® TITLE YOKE DRIVE COUPLING ASSY MATERIAL	
CLASS YD STAN DESCRIPTION 11-1/2, 1480, 500	MAKE: <input checked="" type="checkbox"/> BUY: <input type="checkbox"/>	DRAWN BY SIETING DESIGN LEAD	DATE 03-28-2000 SCALE	DRAWING NO. 125878 SHEET OF REV.

THIS DRAWING IS THE PROPERTY OF HAYES MFG. INC. AND IS LOANED  
SUBJECT TO THE CONDITION THAT IT SHALL NOT BE REPRODUCED,  
COPIED, LOANED OR OTHERWISE DISPOSED OF, DIRECTLY OR INDIRECTLY.  
IT SHALL BE USED AS A MEANS OF REFERENCE TO WORK FURNISHED BY  
THIS COMPANY ONLY AND IS NOT TO BE SUBMITTED TO OUTSIDE PARTIES  
FOR EXAMINATION WITHOUT OUR CONSENT.

COPYRIGHT ©2000-2020 by Hayes Manufacturing, Inc. All rights reserved.

6/16/2021 7:36:18 AM