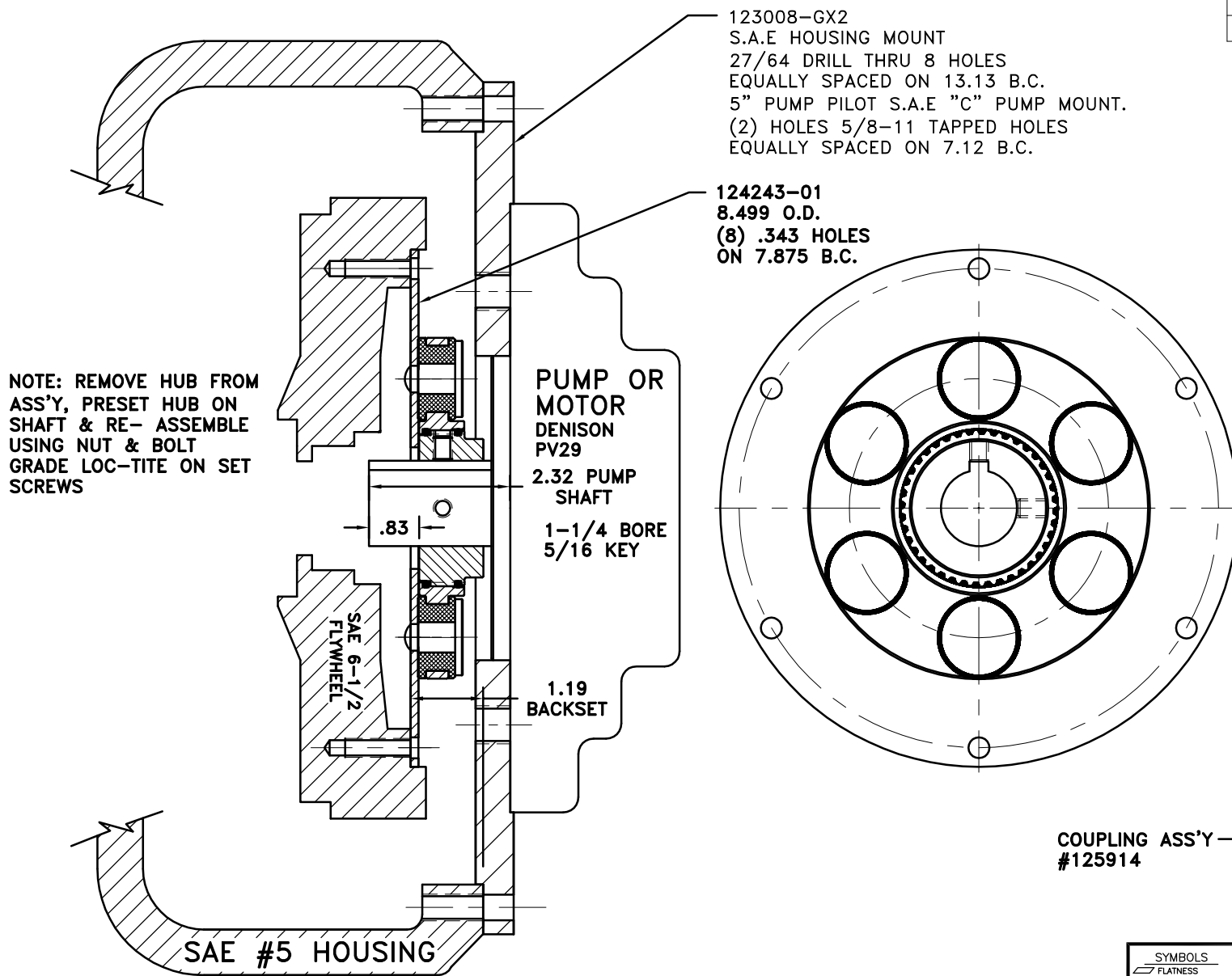


REV	DATE	CHANGE DESCRIPTION	MOD.BY	CK1	CK2
A	11/01/2000	CHANGED GQ2 TO GX2 PLATE	HAVEMAN		



NOTE: REMOVE HUB FROM ASS'Y, PRESET HUB ON SHAFT & RE- ASSEMBLE USING NUT & BOLT GRADE LOC-TITE ON SET SCREWS

PUMP OR MOTOR
DENISON
PV29
2.32 PUMP
SHAFT
1-1/4 BORE
5/16 KEY

1.19
BACKSET

SAE #5 HOUSING

123008-GX2
S.A.E HOUSING MOUNT
27/64 DRILL THRU 8 HOLES
EQUALLY SPACED ON 13.13 B.C.
5" PUMP PILOT S.A.E "C" PUMP MOUNT.
(2) HOLES 5/8-11 TAPPED HOLES
EQUALLY SPACED ON 7.12 B.C.

124243-01
8.499 O.D.
(8) .343 HOLES
ON 7.875 B.C.

COUPLING ASS'Y
#125914

11	123008-GX2	PUMP MOUNT PLATE	1
10	801912	GREASE	1
9	PURCHASE	5/16-18x1/2 SSSCP	1
8	PURCHASE	5/16-18x3/8 SSSCP	1
7	568-143	O-RING (124282-02)	1
6	568-142	O-RING (124838-43)	1
5	H52500	NEOPRENE INSERT	6
4	123206-01	STEEL RIVET	6
3	124838-43	EXTERNAL SPLINED ADAPTER	1
2	124282-02	INTERNAL SPLINED HUB	1
1	124243-01	FLYWHEEL PLATE	1

SYMBOLS	DET.	PART NUMBER	DESCRIPTION	QTY.
FLATNESS STRAIGHTNESS ANGULARITY SQUARENESS PARALLELISM CONCENTRICITY TRUE POSITION ROUNDNESS CIRCULAR RUN OUT TOTAL RUN OUT CYLINDRICITY FINISH	DO NOT SCALE DRAWING TOLERANCES UNLESS OTHERWISE SPECIFIED 125 MAXIMUM ANGLE ±1/2° FRACTION ±1/32 DECIMAL .00 ±.01 .000 ±.005 .0000 ±.0005		HAYES MANUFACTURING INC. ® TITLE FLYWHEEL COUPLING ASS'Y WITH PUMP MOUNT PLATE MATERIAL	
- UNLESS OTHERWISE SPECIFIED - REMOVE FIRST THREAD ON ALL TAPPED HOLES BREAK ALL SHARP CORNERS .010 TO .020 STAMP OR MARK DRAWING NO.		DRAWN BY HAVEMAN CHECKED BY RJH	DATE 4-25-00 SCALE	DRAWING NO. 125913 SHEET OF REV.

THIS DRAWING IS THE PROPERTY OF HAYES MFG. INC. AND IS LOANED SUBJECT TO THE CONDITION THAT IT SHALL NOT BE REPRODUCED, COPIED, LOANED OR OTHERWISE DISPOSED OF, DIRECTLY OR INDIRECTLY. IT SHALL BE USED AS A MEANS OF REFERENCE TO WORK FURNISHED BY THIS COMPANY ONLY AND IS NOT TO BE SUBMITTED TO OUTSIDE PARTIES FOR EXAMINATION WITHOUT OUR CONSENT.