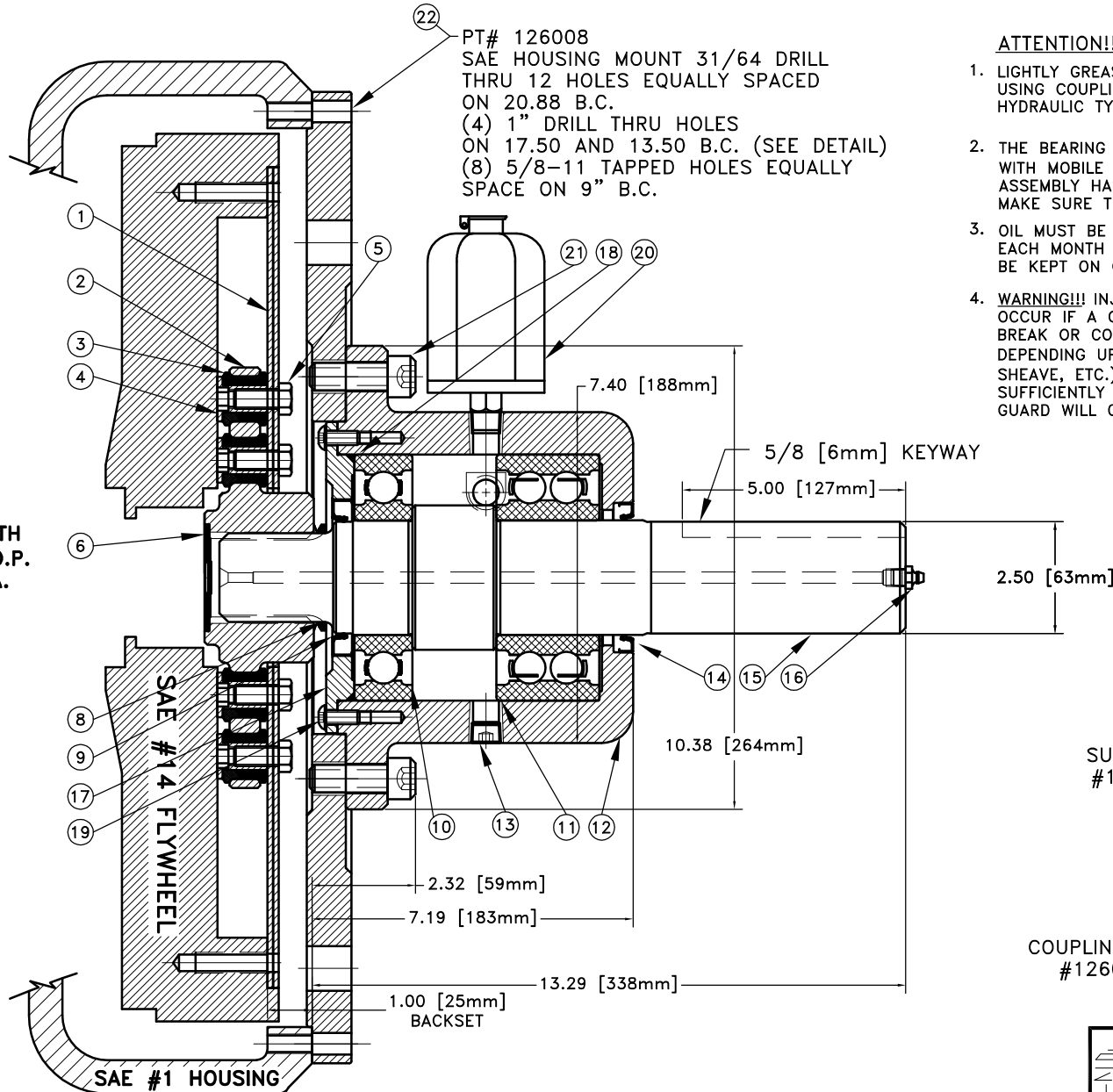


REV	DATE	CHANGE DESCRIPTION	MOD. BY	CK1	CK2
H	10/23/2007	CHANGED SHAFT DESIGN	ZS	RJH	HM

ATTENTION!!!

1. LIGHTLY GREASE INTERNAL AND EXTERNAL AREA OF SPLINE AT ASSEMBLY USING COUPLING GREASE (OVER GREASING COULD CAUSE A HYDRAULIC TYPE LIFT ON SEALS).
2. THE BEARING HOUSING IS SHIPPED FILLED TO OVERFLOW WITH MOBILE 1 5W/30 (3/4 OF A QUART). ONCE ASSEMBLY HAS BEEN INSTALLED ON ENGINE, CHECK TO MAKE SURE THAT OIL IS STILL FULL.
3. OIL MUST BE CHANGED EVERY 800-1000 HOURS OR EACH MONTH WHICH EVER COMES FIRST. RECORDS MUST BE KEPT ON OIL CHANGES OR WARRANTY WILL BE VOID.
4. **WARNING!!!** INJURY OR DEATH FROM A ROTATING STUB SHAFT CAN OCCUR IF A CONDITION EXISTS WHICH WOULD CAUSE THE SHAFT TO BREAK OR COME APART FROM ANY PART OF THE ASSEMBLY. DEPENDING UPON THE APPLICATION (FOR EXAMPLE, FAN, PULLEY, SHEAVE, ETC.), THE AREA AROUND THE STUB SHAFT MUST BE SUFFICIENTLY GUARDED SO THAT IN THE EVENT OF FAILURE, THE GUARD WILL CONTAIN ANY AIRBORNE PARTS.

126083
15 TEETH
8/16 D.P.
30° P.A.



PT# 126008
SAE HOUSING MOUNT 31/64 DRILL
THRU 12 HOLES EQUALLY SPACED
ON 20.88 B.C.
(4) 1" DRILL THRU HOLES
ON 17.50 AND 13.50 B.C. (SEE DETAIL)
(8) 5/8-11 TAPPED HOLES EQUALLY
SPACE ON 9" B.C.

SUB ASSY
#126011

COUPLING ASSY
#126084

NO.	DESCRIPTION	QTY.
22	126008 PUMP MOUNT PLATE	1
21	BOLT 5/8-11x1-3/4 SHCS	10
20	31183 OIL RESERVOIR	1
19	BOLT 5/16-18x3/4 BUTTON HEAD	6
18	568-252 O-RING	1
17	128775 REAR SEAL ADAPTER	1
16	600000 GREASE ZERT	1
15	126007 SPLINED SHAFT	1
14	25420 SEAL	1
13	3/8-18 DRAIN/OVERFLOW PLUG	2
12	126006 BEARING HOUSING	1
11	5313W BR DOUBLE ROLLER BEARING	1
10	313WDN SINGLE ROLLER BEARING	1
9	24980 SEAL	1
8	400500 V-RING SEAL	1
7	801912 GREASE	4
6	R-0017-03 GREASE PLUG	1
5	BOLT 7/16-20-1 HHB Y D	27
4	123727 THREADED BUSHING	27
3	H62500 NEOPRENE INSERT	27
2	126083 COUPLING HUB	1
1	126644 FLYWHEEL PLATE	2

SYMBOLS	DET.	PART NUMBER	DESCRIPTION	QTY.
▭ FLATNESS ▭ STRAIGHTNESS ▭ ANGULARITY ⊥ PERPENDICULARITY ∥ PARALLELISM ⊙ CONCENTRICITY ⊕ TRUE POSITION ○ ROUNDNESS ⊖ CIRCULAR RUN OUT ⊖ TOTAL RUN OUT ⊖ CYLINDRICITY ▭ FINISH	DO NOT SCALE DRAWING TOLERANCES UNLESS OTHERWISE SPECIFIED 125 MAXIMUM ANGLE ±1/2° FRACTION ±1/32 DECIMAL .00 ±.01 .000 ±.005 .0000 ±.0005		HAYES MANUFACTURING INC. ® TITLE BEARING HOUSING ASS'Y MATERIAL	
CLASS	MAKE: <input type="checkbox"/> BUY: <input type="checkbox"/>	DRAWN BY LAWSON	DATE 10-24-00	DRAWING NO. 126082
DESCRIPTION		CHECKED BY	SCALE	SHEET OF REV. OF REV.

THIS DRAWING IS THE PROPERTY OF HAYES MFG. INC. AND IS LOANED SUBJECT TO THE CONDITION THAT IT SHALL NOT BE REPRODUCED, COPIED, LOANED OR OTHERWISE DISPOSED OF, DIRECTLY OR INDIRECTLY. IT SHALL BE USED AS A MEANS OF REFERENCE TO WORK FURNISHED BY THIS COMPANY ONLY AND IS NOT TO BE SUBMITTED TO OUTSIDE PARTIES FOR EXAMINATION WITHOUT OUR CONSENT.