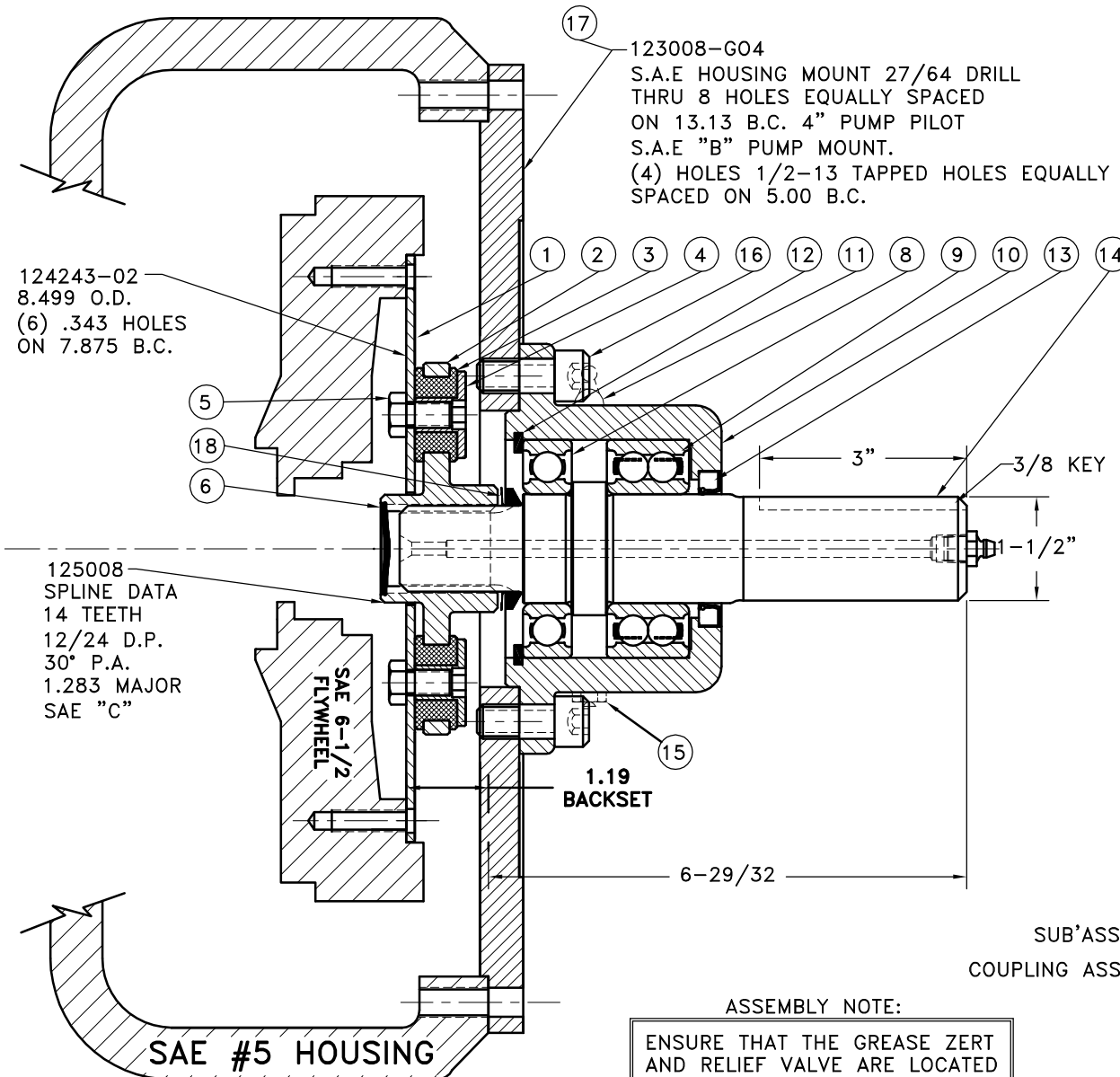


| REV | DATE       | CHANGE DESCRIPTION       | MOD. BY | CK1 | CK2 |
|-----|------------|--------------------------|---------|-----|-----|
| C   | 11/21/2002 | CHANGED V-RING TO VS-032 | ZS      | RJH | HM  |



#### NOTES:

1. LIGHTLY GREASE INTERNAL AND EXTERNAL AREA OF SPLINE AT ASSEMBLY USING SUPPLIED COUPLING GREASE (OVER GREASING COULD CAUSE A HYDRAULIC TYPE LIFT ON SEALS).
2. **AT ASSEMBLY GREASE BEARING HOUSING UNTIL PIN EXTENDS FROM PRESSURE RELIEF VALVE (LOCATED 180° FROM GREASE ZERT).** USE OF AN UNLEADED EXTREME PRESSURE LITHIUM GREASE, WITH NLGI NO.2 GRADE IS RECOMMENDED. RUN TIME BETWEEN GREASINGS NOT TO EXCEED 2,000 HOURS.
3. **WARNING!!!** INJURY OR DEATH FROM A ROTATING STUB SHAFT CAN OCCUR IF A CONDITION EXISTS WHICH WOULD CAUSE THE SHAFT TO BREAK OR COME APART FROM ANY PART OF THE ASSEMBLY. DEPENDING UPON THE APPLICATION (FOR EXAMPLE, FAN, PULLEY, SHEAVE, ETC.), THE AREA AROUND THE STUB SHAFT MUST BE SUFFICIENTLY GUARDED SO THAT IN THE EVENT OF FAILURE, THE GUARD WILL CONTAIN ANY AIRBORNE PARTS.

|    |            |                     |   |
|----|------------|---------------------|---|
| 18 | VS-032     | V-RING              | 1 |
| 17 | 123008-G04 | PUMP MOUNT PLATE    | 1 |
| 16 | BOLT       | 1/2-13x1-1/8 SHCS D | 4 |
| 15 | 1093K11    | RELIEF VALVE        | 1 |
| 14 | 126087     | SPLINED SHAFT       | 1 |
| 13 | 15830      | SEAL                | 1 |
| 12 | RR-314     | SNAP RING           | 1 |
| 11 | 600000     | GREASE ZERT         | 1 |
| 10 | 125007     | BEARING HOUSING     | 1 |
| 9  | 5208WD     | DOUBLE BEARING      | 1 |
| 8  | 208P       | BEARING             | 1 |
| 7  | 801912     | GREASE              | 1 |
| 6  | R-0017-01  | HUBBARD PLUG        | 1 |
| 5  | BOLT       | 5/16-24x5/8 HHB Y D | 8 |
| 4  | 123729-01  | THREADED BUSHING    | 8 |
| 3  | H52500     | NEOPRENE INSERT     | 8 |
| 2  | 125008     | COUPLING HUB        | 1 |
| 1  | 124243-02  | FLYWHEEL PLATE      | 1 |

SUB'ASS'Y #126088  
COUPLING ASS'Y #125375

#### ASSEMBLY NOTE:

ENSURE THAT THE GREASE ZERT AND RELIEF VALVE ARE LOCATED HORIZONTAL WHEN MOUNTING ON TO PUMP MOUNT PLATE.

REF: 5" SHAFT ASS'Y SEE 125725

THIS DRAWING IS THE PROPERTY OF HAYES MFG. INC. AND IS LOANED SUBJECT TO THE CONDITION THAT IT SHALL NOT BE REPRODUCED, COPIED, LOANED OR OTHERWISE DISPOSED OF, DIRECTLY OR INDIRECTLY. IT SHALL BE USED AS A MEANS OF REFERENCE TO WORK FURNISHED BY THIS COMPANY ONLY AND IS NOT TO BE SUBMITTED TO OUTSIDE PARTIES FOR EXAMINATION WITHOUT OUR CONSENT.

| SYMBOLS   | DET.  | PART NUMBER  | DESCRIPTION   | QTY.  |
|---|---|--|---|---|
| FLATNESS<br>STRAIGHTNESS<br>ANGULARITY<br>PERPENDICULARITY<br>PARALLELISM<br>CONCENTRICITY<br>TRUE POSITION<br>ROUNDNESS<br>CIRCULAR RUN OUT<br>TOTAL RUN OUT<br>CYLINDRICITY<br>FINISH | DO NOT SCALE<br>DRAWING<br>TOLERANCES UNLESS OTHERWISE SPECIFIED<br>125 MAXIMUM<br>ANGLE ±1/2°<br>FRACTION ±1/32<br>DECIMAL<br>.00 ±.01<br>.000 ±.005<br>.0000 ±.0005 | MAKE: <input type="checkbox"/> BUY: <input type="checkbox"/> | <b>HAYES</b><br>MANUFACTURING INC. ®<br><b>TITLE</b><br>BEARING SUPPORTED STUB SHAFT ASS'Y<br><b>MATERIAL</b> | DRAWN BY<br>HAVEMAN<br>DATE<br>03-29-01<br>CHECKED BY<br>SCALE<br>DRAWING NO.<br><b>126264</b><br>SHEET OF REV. |

4/16/2014 9:07:06 AM