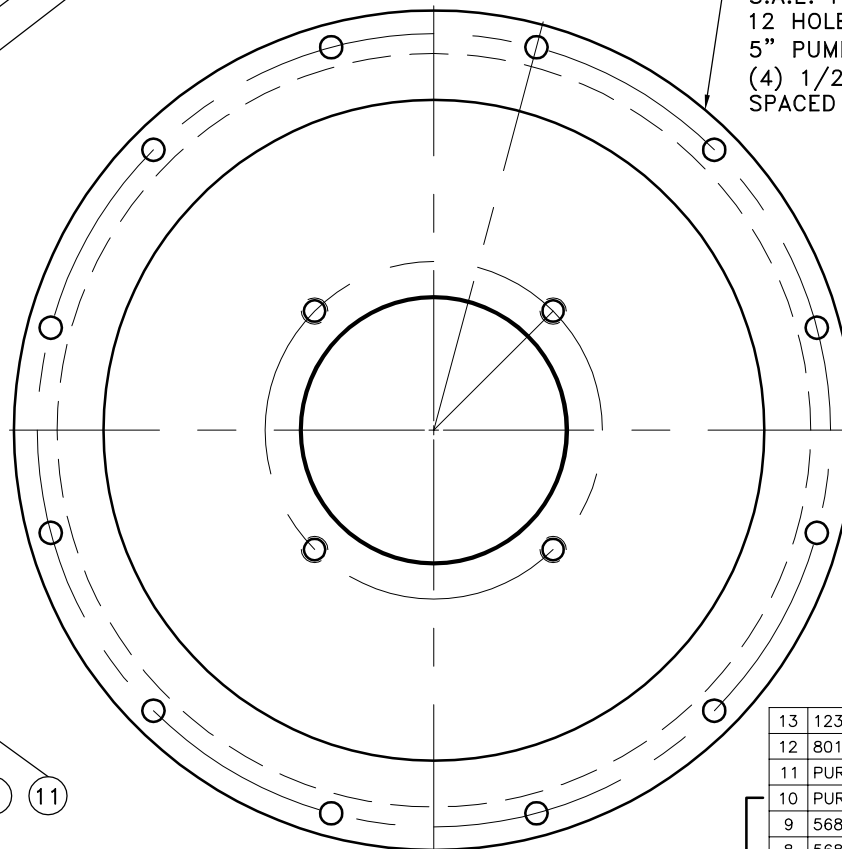
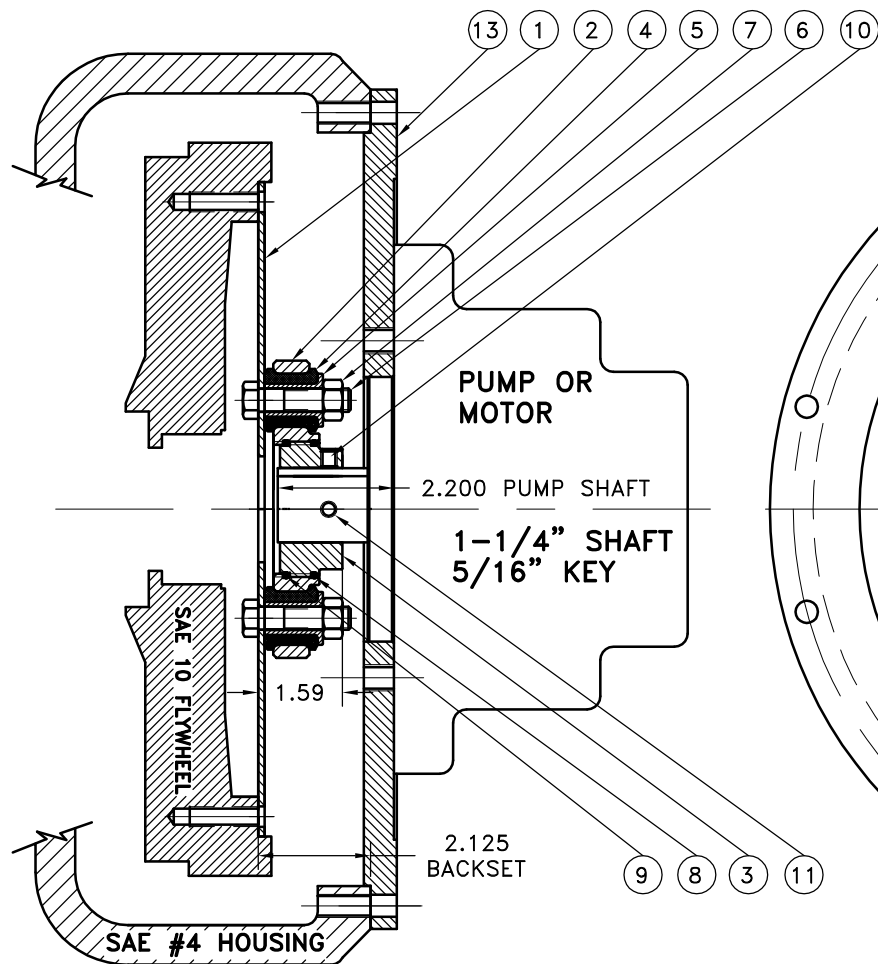


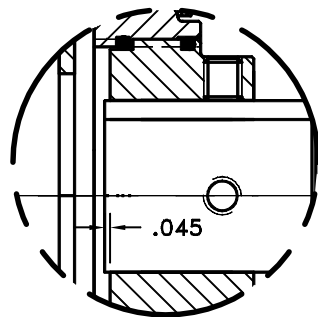
REV	DATE	CHANGE DESCRIPTION	MOD.BY	CK1	CK2
A	02/21/2002	CHANGED TO BOLTED ASS'Y	ZS	RJH	HM



UP TO 110 HP

13	123008-EX4	PUMP MOUNT PLATE	1
12	801912	GREASE	1
11	PURCHASE	5/16-18x1/2 SSSCP	1
10	PURCHASE	5/16-18x3/8 SSSCP	1
9	568-143	O-RINGS (124473)	1
8	568-142	O-RINGS (124284-43)	1
7	N250	7/16-20 NUT	6
6	HX230	7/16-20 x 1-3/4" HHB	6
5	123000-00	STEEL BUSHING	6
4	H62500	NEOPRENE INSERT	6
3	124284-43	EXTERNAL SPLINED ADAPTER	1
2	124473	INTERNAL SPLINED HUB	1
1	123243-18	FLYWHEEL PLATE	1

COUPLING ASS'Y #124604



NOTE: REMOVE HUB FROM
ASS'Y, PRESET HUB ON
SHAFT & RE- ASSEMBLE
USING NUT & BOLT
GRADE LOC-TITE ON SET
SCREWS

2.200 SHAFT LENGTH

THIS DRAWING IS THE PROPERTY OF HAYES MFG. INC. AND IS LOANED
SUBJECT TO THE CONDITION THAT IT SHALL NOT BE REPRODUCED,
COPIED, LOANED OR OTHERWISE DISPOSED OF, DIRECTLY OR INDIRECTLY.
IT SHALL BE USED AS A MEANS OF REFERENCE TO WORK FURNISHED BY
THIS COMPANY ONLY AND IS NOT TO BE SUBMITTED TO OUTSIDE PARTIES
FOR EXAMINATION WITHOUT OUR CONSENT.

SYMBOLS	DET.	PART NUMBER	DESCRIPTION	QTY.
FLATNESS STRAIGHTNESS ANGULARITY SQUARENESS PARALLELISM CONCENTRICITY TRUE POSITION ROUNDNESS CIRCULAR RUN OUT TOTAL RUN OUT CYLINDRICITY FINISH	DO NOT SCALE DRAWING TOLERANCES UNLESS OTHERWISE SPECIFIED 12/32 MAXIMUM ANGLE ±1/2° FRACTION ±1/32 DECIMAL .00 ±.01 .000 ±.005 .0000 ±.0005	HAYES MANUFACTURING INC. ® TITLE FLYWHEEL COUPLING ASS'Y WITH PUMP MOUNT PLATE MATERIAL		
- UNLESS OTHERWISE SPECIFIED - REMOVE FIRST THREAD ON ALL TAPPED HOLES BREAK ALL SHARP CORNERS .010 TO .020 STAMP OR MARK DRAWING NO.		DRAWN BY SIETING	DATE 05-07-01	DRAWING NO. 126299 SHEET OF REV.
		CHECKED BY	SCALE	