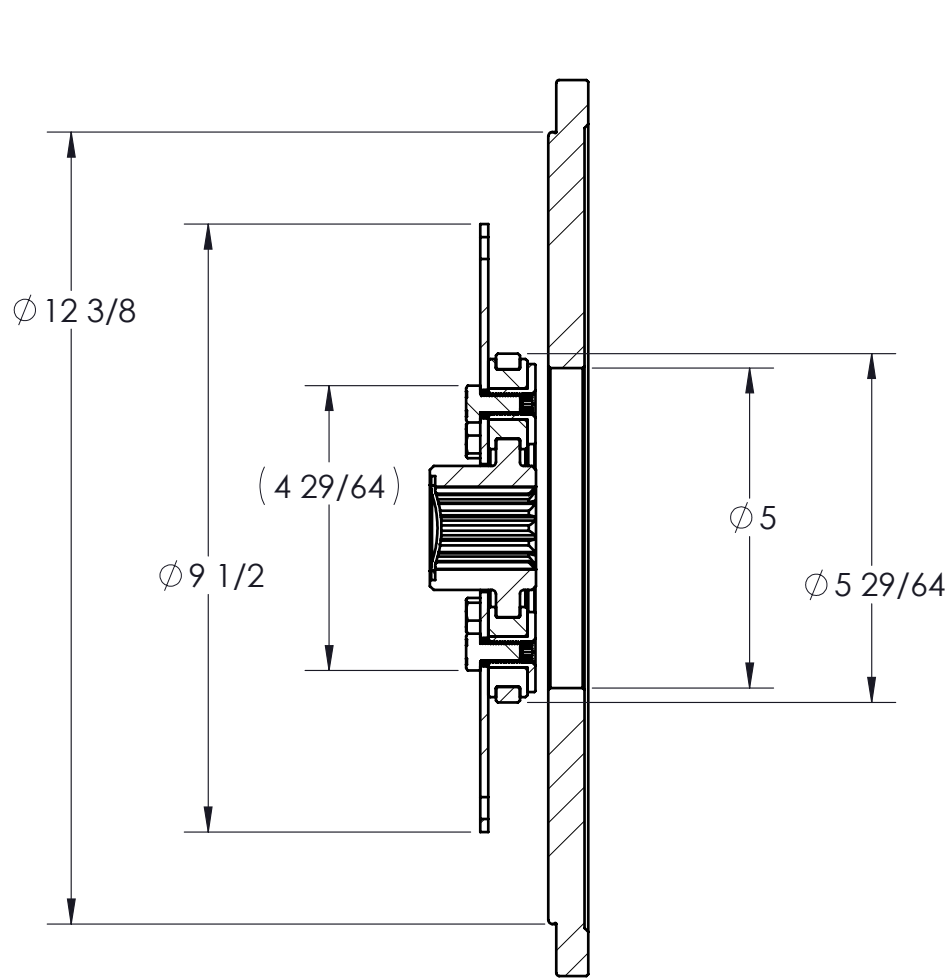
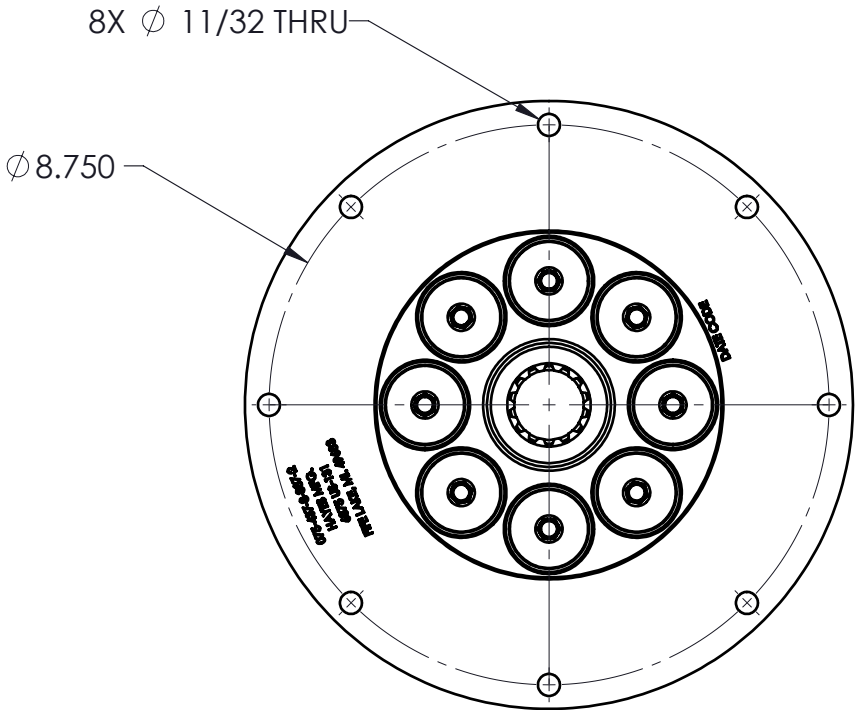
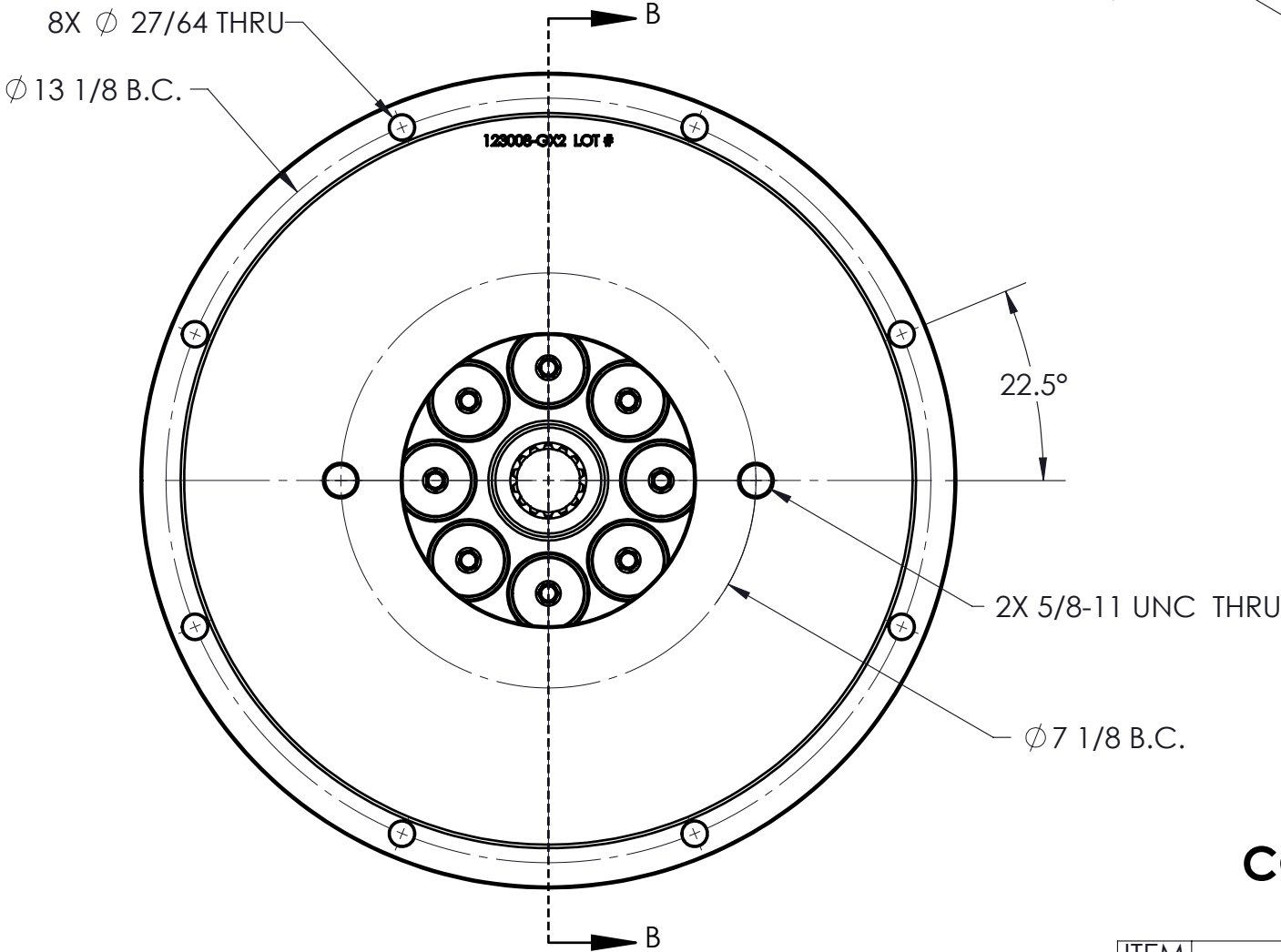


CUSTOMER DRAWING

REVISIONS						
ZONE	REV.	DESCRIPTION	DATE	APR 1	APR 2	DCR #
	C	RELEASED IN SW; UPDTAED TO PILOTED BUSHINGS	3/28/23			4295



SECTION B-B



COUPLING FRONT VIEW

COUPLING IS NOT SERVICEABLE


PUMP DRIVE SPECS	
FLYWHEEL	SAE 7.5
HOUSING	SAE 5
PUMP FLANGE	SAE C 2-BOLT
PUMP SHAFT	14T 12/24 "C"
HP RATING (@1800 RPM)	75

PROPRIETARY AND CONFIDENTIAL
THE INFORMATION CONTAINED IN THIS DRAWING IS THE SOLE PROPERTY OF HAYES MANUFACTURING. ANY REPRODUCTION IN PART OR AS A WHOLE WITHOUT THE WRITTEN PERMISSION OF HAYES MANUFACTURING IS PROHIBITED.

UNLESS OTHERWISE SPECIFIED: DIMENSIONS ARE IN INCHES TOLERANCES: FRACTIONAL ±1/32 ANGULAR: MACH ±1/2° TWO DECIMAL ±.01 THREE DECIMAL ±.005 FOUR DECIMAL ±.0005		SYMBOLS □ FLATNESS ○ ROUNDNESS // PARALLELISM ∅ DIAMETER "R" RADIUS ⊙ CONCENTRICITY ⊕ TRUE POSITION ⊥ PERPENDICULARITY ↗ CIRCULAR RUN OUT ↘ TOTAL RUN OUT ┌ COUNTERBORE └ COUNTERSINK ▽ HOLE DEPTH ≡ SYMMETRIC	
CLASS	SAE 7.5		
DESCRIPTION	7-1 1/2, 5, 14T12/24, C2, 75		
MAKE	X	WEIGHT	26.0 LB
BUY		VOLUME	CU.IN.
		HEAT TREAT	
		FINISH	

ITEM NO.	PART NUMBER	DESCRIPTION	QTY.
1	124437	FLYWHEEL COUPLING ASSY.	1
2	123008-GX2	PUMP MOUNT PLATE	1

DRAWN	NAME	DATE
PCM APPR.	MM	3/28/2023
ENG APPR.		
SHIP. APPR.		
QA APPR.		
MATERIAL		



TITLE:
FLYWHEEL COUPLING ASM W/
PUMP MOUNT PLATE

DWG. NO.
126310

REV
C

DO NOT SCALE

SHEET 1 OF 4