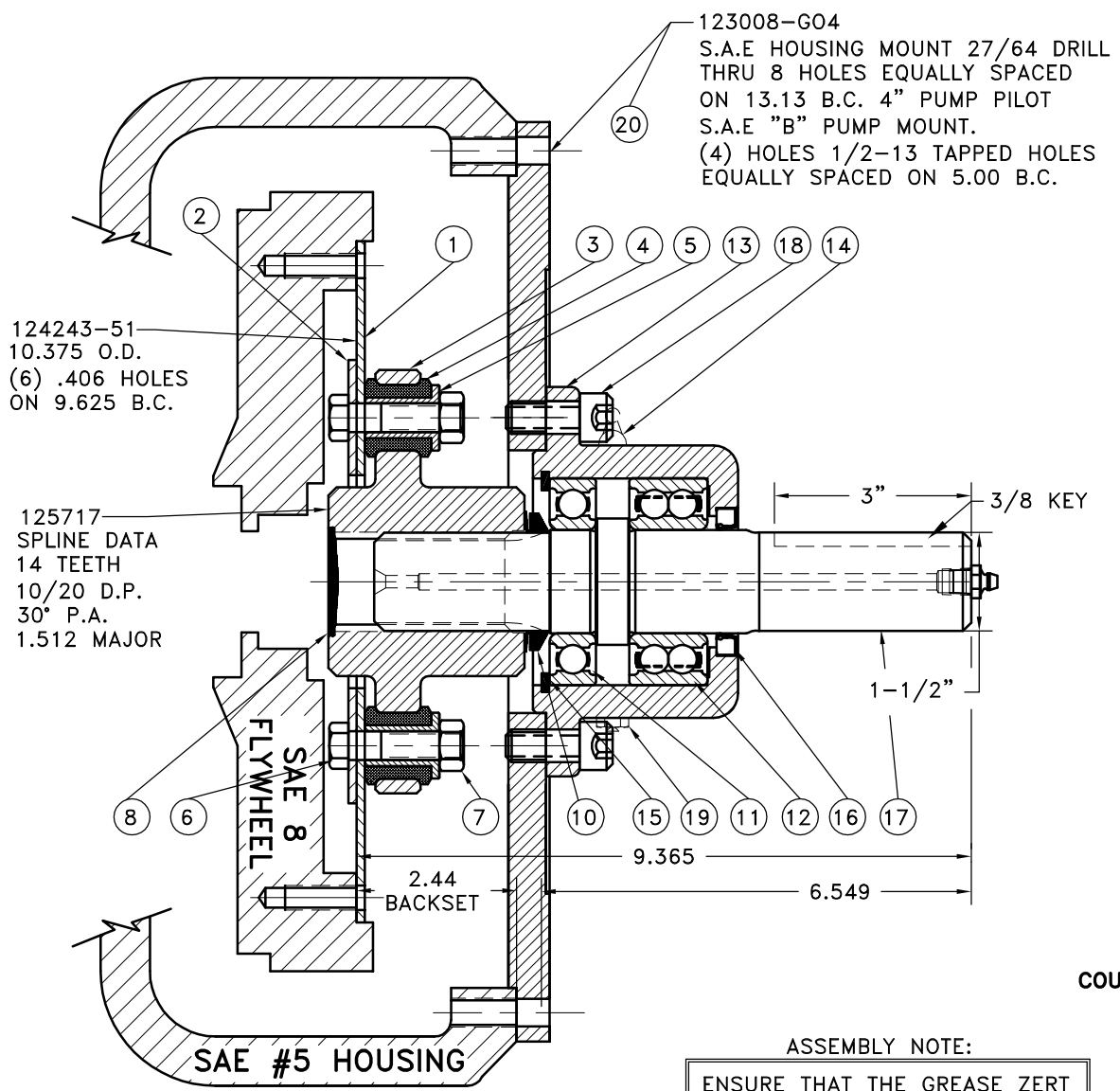


REV	DATE	CHANGE DESCRIPTION	MOD. BY	CK1	CK2
A	02/05/2002	ADDED NEW ASS'Y NOTE	ZS	RJH	HM



123008-G04  
 S.A.E HOUSING MOUNT 27/64 DRILL  
 THRU 8 HOLES EQUALLY SPACED  
 ON 13.13 B.C. 4" PUMP PILOT  
 S.A.E "B" PUMP MOUNT.  
 (4) HOLES 1/2-13 TAPPED HOLES  
 EQUALLY SPACED ON 5.00 B.C.

124243-51  
 10.375 O.D.  
 (6) .406 HOLES  
 ON 9.625 B.C.

125717  
 SPLINE DATA  
 14 TEETH  
 10/20 D.P.  
 30° P.A.  
 1.512 MAJOR

SUB-ASS'Y #126075

COUPLING ASS'Y #125898

ASSEMBLY NOTE:  
 ENSURE THAT THE GREASE ZERT  
 AND RELIEF VALVE ARE LOCATED  
 HORIZONTAL WHEN MOUNTING ON  
 TO PUMP MOUNT PLATE.

**NOTES:**

- LIGHTLY GREASE INTERNAL AND EXTERNAL AREA OF SPLINE AT ASSEMBLY USING SUPPLIED COUPLING GREASE (OVER GREASING COULD CAUSE A HYDRAULIC TYPE LIFT ON SEALS).
- AT ASSEMBLY GREASE BEARING HOUSING UNTIL PIN EXTENDS FROM PRESSURE RELIEF VALVE (LOCATED 180° FROM GREASE ZERK).** USE OF AN UNLEADED EXTREME PRESSURE LITHIUM GREASE, WITH NLGI NO.2 GRADE IS RECOMMENDED. RUN TIME BETWEEN GREASINGS NOT TO EXCEED 2,000 HOURS.
- WARNING!!!** INJURY OR DEATH FROM A ROTATING STUB SHAFT CAN OCCUR IF A CONDITION EXISTS WHICH WOULD CAUSE THE SHAFT TO BREAK OR COME APART FROM ANY PART OF THE ASSEMBLY. DEPENDING UPON THE APPLICATION (FOR EXAMPLE, FAN, PULLEY, SHEAVE, ETC.), THE AREA AROUND THE STUB SHAFT MUST BE SUFFICIENTLY GUARDED SO THAT IN THE EVENT OF FAILURE, THE GUARD WILL CONTAIN ANY AIRBORNE PARTS.

NO	DESCRIPTION	QTY
20	123008-G04 PUMP MOUNT PLATE	1
19	1093K11 RELIEF VALVE	1
18	BOLT 1/2-13x1-1/8 SHCS D	4
17	126073 SPLINED SHAFT	1
16	15830 SEAL	1
15	RR-314 SNAP RING	1
14	600000 GREASE ZERT	1
13	125007 BEARING HOUSING	1
12	5208WD DOUBLE BEARING	1
11	208P BEARING	1
10	400401 V-RING	1
9	801912 GREASE	1
8	R-0017-02 GREASE PLUG	1
7	NUT 7/16-20 NUT	10
6	BOLT 7/16-20x1-3/4 HHB Y D	10
5	123000-00 STEEL BUSHING	10
4	H62500 NEOPRENE INSERT	10
3	125717 COUPLING HUB	1
2	124657-03 BACKING PLATE	1
1	124243-51 FLYWHEEL PLATE	1

SYMBOLS	DET.	PART NUMBER	DESCRIPTION	QTY.
FLATNESS	DO NOT SCALE			
STRAIGHTNESS	DRAWING			
ANGULARITY	TOLERANCES UNLESS OTHERWISE SPECIFIED			
PERPENDICULARITY	125 MAXIMUM			
PARALLELISM	ANGLE ±1/2°			
CONCENTRICITY	FRACTION ±1/32			
TRUE POSITION	DECIMAL			
ROUNDNESS	.00 ±.01			
CIRCULAR RUN OUT	.000 ±.005			
TOTAL RUN OUT	.0000 ±.0005			
CYLINDRICITY				
FINISH				



TITLE BEARING SUPPORTED STUB SHAFT

MATERIAL

CLASS	MAKE: <input type="checkbox"/> BUY: <input type="checkbox"/>	DRAWN BY MAYCROFT	DATE 08-08-01	DRAWING NO. 126415
DESCRIPTION	CHECKED BY RJH	SCALE	SHEET OF REV.	

REF: 5" SHAFT ASS'Y SEE 126416

THIS DRAWING IS THE PROPERTY OF HAYES MFG. INC. AND IS LOANED SUBJECT TO THE CONDITION THAT IT SHALL NOT BE REPRODUCED, COPIED, LOANED OR OTHERWISE DISPOSED OF, DIRECTLY OR INDIRECTLY. IT SHALL BE USED AS A MEANS OF REFERENCE TO WORK FURNISHED BY THIS COMPANY ONLY AND IS NOT TO BE SUBMITTED TO OUTSIDE PARTIES FOR EXAMINATION WITHOUT OUR CONSENT.