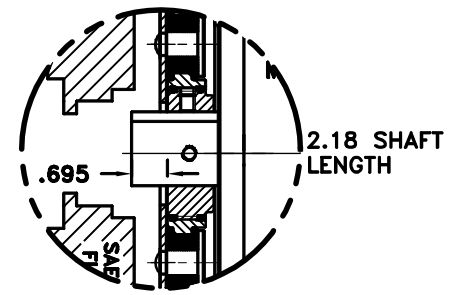
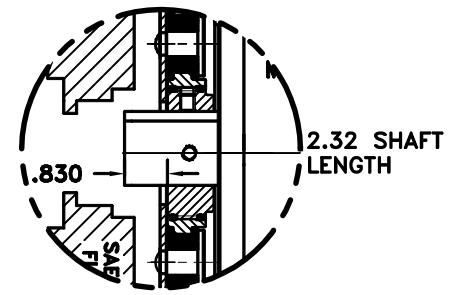
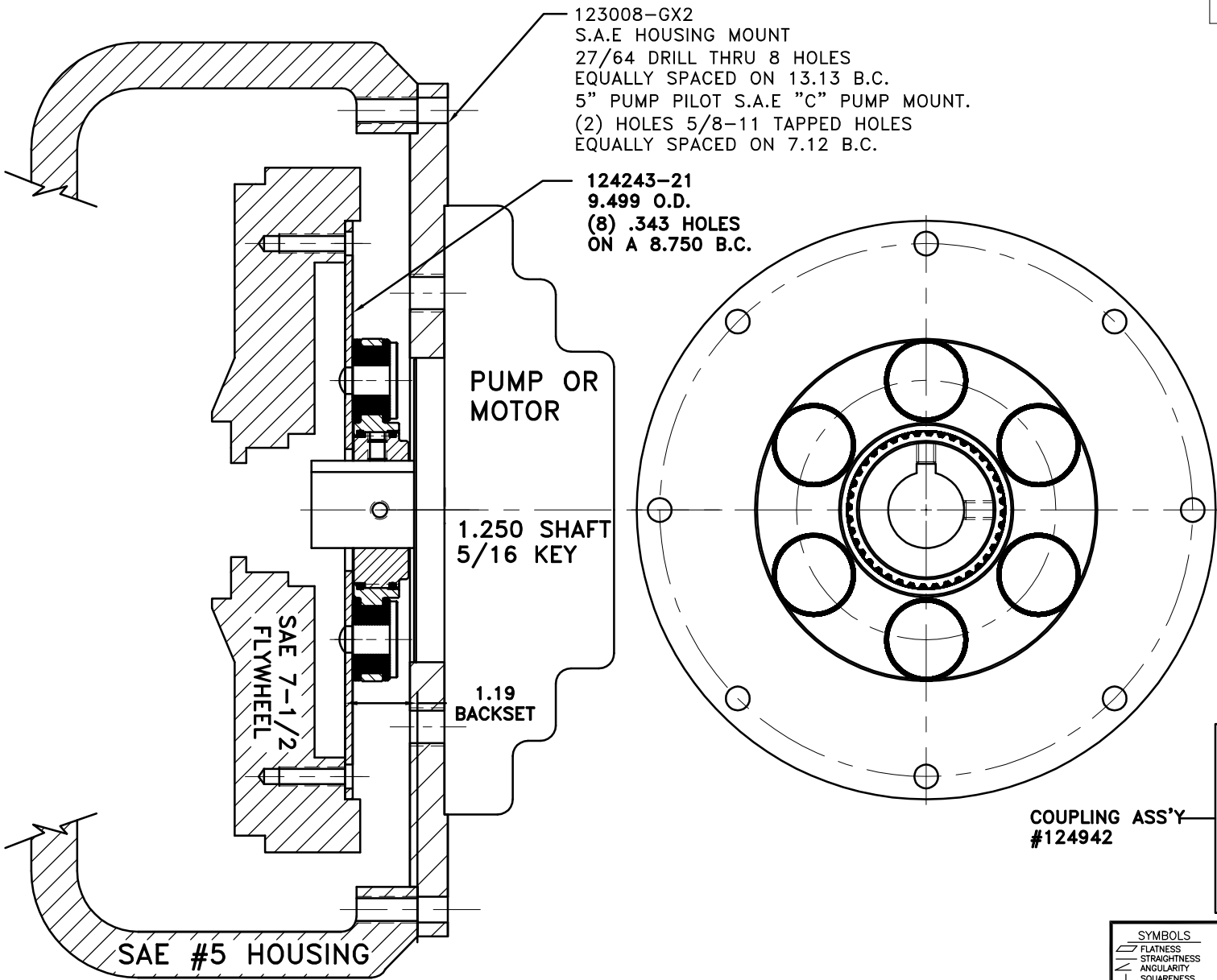


REV	DATE	CHANGE DESCRIPTION	MOD.BY	CK1	CK2



NOTE: REMOVE HUB FROM ASS'Y, PRESET HUB ON SHAFT & RE- ASSEMBLE USING NUT & BOLT GRADE LOC-TITE ON SET SCREWS

UP TO 50 HP

QTY.	DESCRIPTION	PART NUMBER	123008-GX2
1	PUMP MOUNT PLATE	123008-GX2	1
1	GREASE	801912	1
1	5/16-18-3/8 S.S.S.C.P.	PURCHASE	9
1	5/16-18-1/2 S.S.S.C.P.	PURCHASE	8
1	O-RING (124282-02)	568-143	7
1	O-RING (125596-43)	568-142	6
6	STEEL RIVET	123206-01	5
6	NEOPRENE INSERT	H52500	4
1	EXTERNAL SPLINED HUB	125596-43	3
1	INTERNAL SPLINED ADAPTER	124282-02	2
1	FLYWHEEL PLATE	124243-21	1

COUPLING ASS'Y #124942

SYMBOLS	DET.	PART NUMBER	DESCRIPTION	QTY.
FLATNESS STRAIGHTNESS ANGULARITY SQUARENESS PARALLELISM CONCENTRICITY TRUE POSITION ROUNDNESS CIRCULAR RUN OUT TOTAL RUN OUT CYLINDRICITY FINISH	DO NOT SCALE DRAWING TOLERANCES UNLESS OTHERWISE SPECIFIED MAXIMUM ANGLE ±1/2° FRACTION ±1/32 DECIMAL .00 ±.01 .000 ±.005 .0000 ±.0005			
			TITLE <b>FLYWHEEL COUPLING ASS'Y W/ PUMP MOUNT PLATE</b>	
			MATERIAL	
			DRAWN BY MAYCROFT	
			DATE 08-16-01	
			DRAWING NO. <b>126426</b>	
			CHECKED BY RJH	
			SCALE	
			SHEET OF REV.	

THIS DRAWING IS THE PROPERTY OF HAYES MFG. INC. AND IS LOANED SUBJECT TO THE CONDITION THAT IT SHALL NOT BE REPRODUCED, COPIED, LOANED OR OTHERWISE DISPOSED OF, DIRECTLY OR INDIRECTLY. IT SHALL BE USED AS A MEANS OF REFERENCE TO WORK FURNISHED BY THIS COMPANY ONLY AND IS NOT TO BE SUBMITTED TO OUTSIDE PARTIES FOR EXAMINATION WITHOUT OUR CONSENT.