

REV	DATE	CHANGE DESCRIPTION	MOD. BY	CK1	CK2

PT# 123008-GN2
 S.A.E HOUSING MOUNT 27/64 DRILL
 THRU 8 HOLES EQUALLY SPACED
 ON 13.13 B.C. 3.25 PUMP PILOT
 S.A.E "A" PUMP MOUNT.
 (2) 3/8-16 TAPPED HOLES EQUALLY
 SPACED ON 4.18 B.C.

124243-13
 10.375 O.D.
 (6) .406 HOLES
 ON 9.625 B.C.

**PUMP
 OR
 MOTOR**

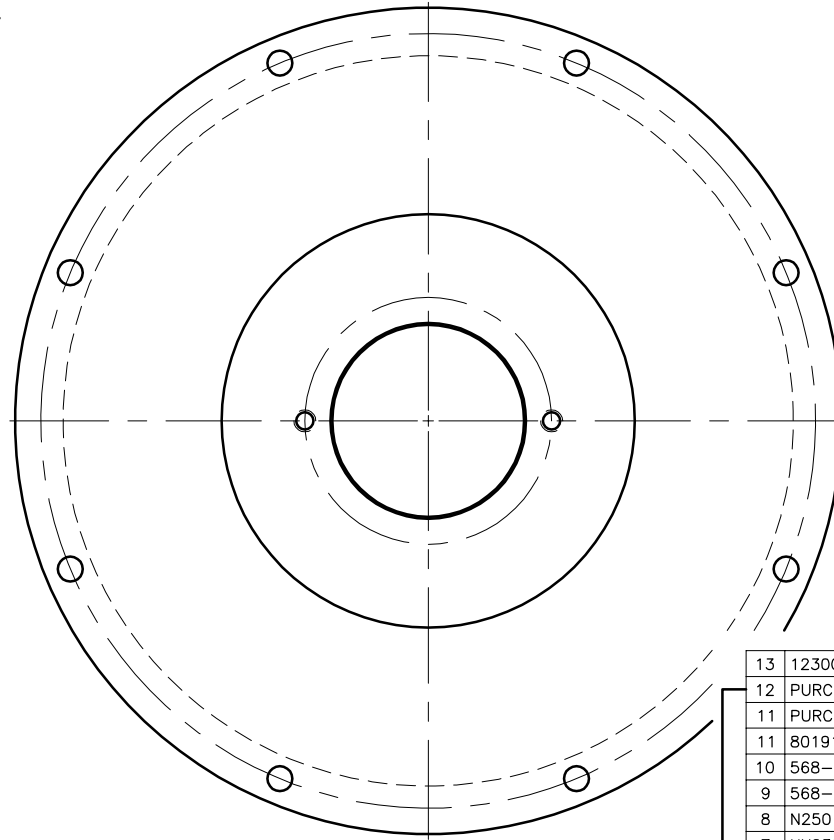
SEE BOX TO
 POSITION HUB
 NOT TO SCALE

**3/4" SHAFT
 3/16" KEY**

FLYWHEEL
 SAE 8

2.440
 BACKSET

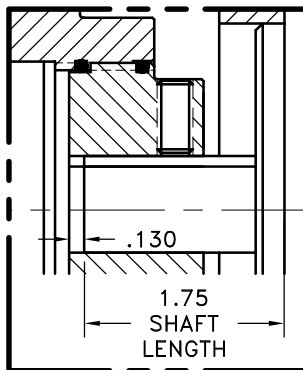
SAE #5 HOUSING



COUPLING ASS'Y #127186

13	123008-GN2	PUMP MOUNT PLATE [5]	1
12	PURCHASE	5/16-18 x 5/8" SSSCP	1
11	PURCHASE	5/16-18 x 12" SSSCP	1
11	801912	GREASE	1
10	568-143	O-RING (124865)	1
9	568-142	O-RING (124284-09)	1
8	N250	7/16-20 NUT	8
7	HX230	7/16-20 x 1 3/4" HHB	8
6	123000-00	STEEL BUSHING	8
5	H62500	NEOPRENE INERT	8
4	124284-07	EXTERNAL SPLINED ADAPTER	1
3	124865	INT SPL HUB [40-16/32\4.125]	1
2	124657-02	BACKING PLATE	1
1	123243-13	FLYWHEEL PLATE [8\4.125]	1

**NOTE: REMOVE HUB FROM
 ASS'Y, PRESET HUB ON
 SHAFT & RE- ASSEMBLE
 USING NUT & BOLT
 GRADE LOC-TITE ON SET
 SCREWS**



THIS DRAWING IS THE PROPERTY OF HAYES MFG. INC. AND IS LOANED
 SUBJECT TO THE CONDITION THAT IT SHALL NOT BE REPRODUCED,
 COPIED, LOANED OR OTHERWISE DISPOSED OF, DIRECTLY OR INDIRECTLY.
 IT SHALL BE USED AS A MEANS OF REFERENCE TO WORK FURNISHED BY
 THIS COMPANY ONLY AND IS NOT TO BE SUBMITTED TO OUTSIDE PARTIES
 FOR EXAMINATION WITHOUT OUR CONSENT.

SYMBOLS	DET.	PART NUMBER	DESCRIPTION	QTY.
▭ FLATNESS — STRAIGHTNESS ∠ ANGULARITY ⊥ SQUARENESS ∥ PARALLELISM ⊕ CONCENTRICITY ⊙ TRUE POSITION ○ ROUNDNESS ⊙ CIRCULAR RUN OUT ⊙ TOTAL RUN OUT √ FINISH	DO NOT SCALE DRAWING TOLERANCES UNLESS OTHERWISE SPECIFIED 1/32" MAXIMUM ANGLE ±1/2° FRACTION ±1/32 DECIMAL .00 ±.01 .000 ±.005 .0000 ±.0005			
- UNLESS OTHERWISE SPECIFIED - REMOVE FIRST THREAD ON ALL TAPPED HOLES BREAK ALL SHARP CORNERS .010 TO .020 STAMP OR MARK DRAWING NO.		DRAWN BY SIETING CHECKED BY RJH	DATE 04-30-03 SCALE	DRAWING NO. 127185 SHEET OF REV.