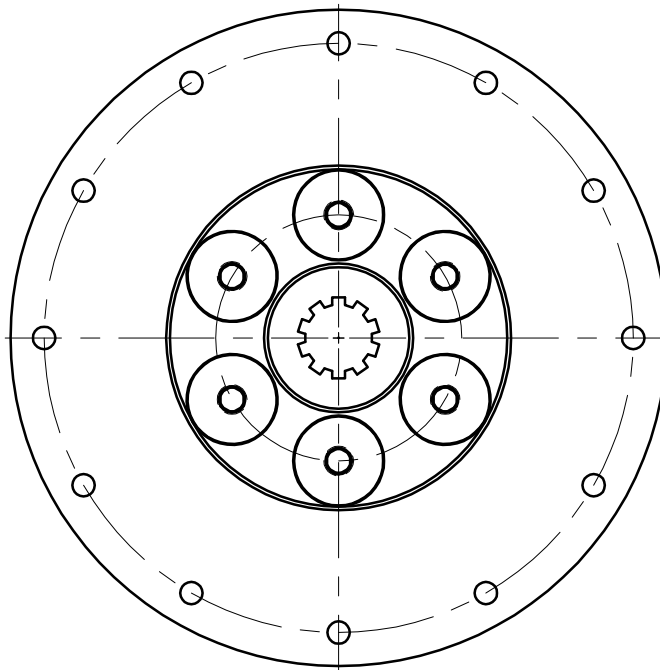
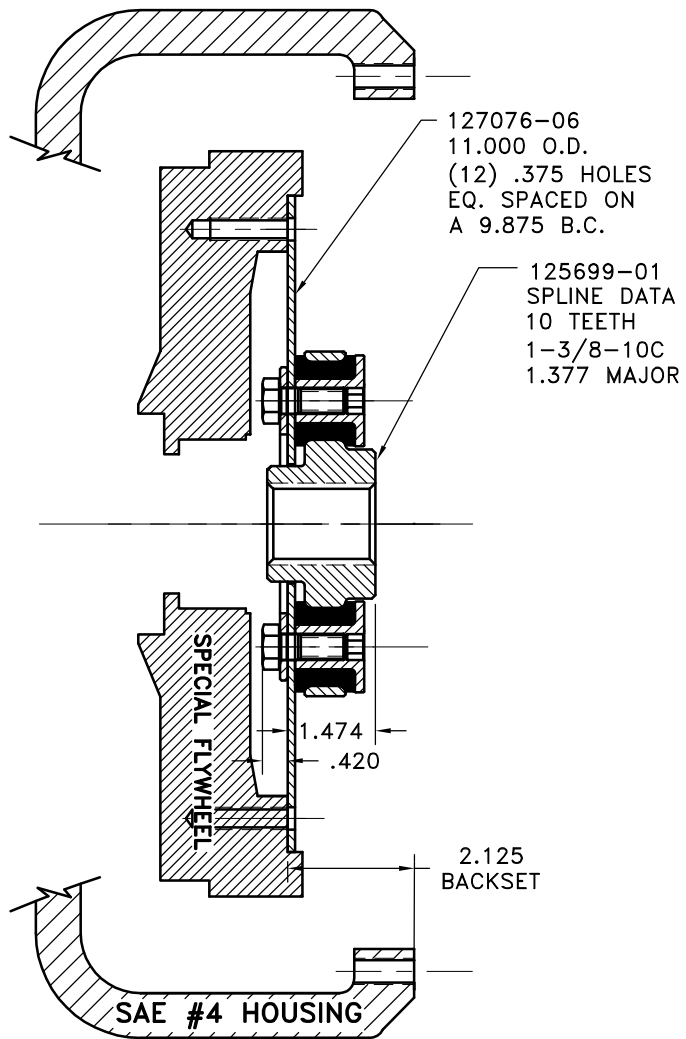


REV	DATE	CHANGE DESCRIPTION	MOD.BY	CK1	CK2



UP TO 110 H.P.

6	801912	GREASE	1
5	HX200	7/16-20-1 BOLT	6
4	H92500	NEOPRENE INSERT	6
3	124412-02	THREADED BUSHING	6
2	125699-01	COUPLING HUB [1.38-10\4.125]	1
2	124623	BACKING PLATE	1
1	127076-06	FLYWHEEL PLATE [SPEC.\4.125]	1

SYMBOLS	DET.	PART NUMBER	DESCRIPTION	QTY.
FLATNESS STRAIGHTNESS ANGULARITY SQUARENESS PARALLELISM CONCENTRICITY TRUE POSITION ROUNDNESS CIRCULAR RUN OUT TOTAL RUN OUT CYLINDRICITY FINISH	DO NOT SCALE DRAWING TOLERANCES UNLESS OTHERWISE SPECIFIED 125 MAXIMUM ANGLE $\pm 1/2^\circ$ FRACTION $\pm 1/32$ DECIMAL .00 $\pm .01$.000 $\pm .005$.0000 $\pm .0005$	HAYES MANUFACTURING INC. ®	TITLE FLYWHEEL COUPLING ASS'Y MATERIAL	DRAWN BY SIETING CHECKED BY RJH
- UNLESS OTHERWISE SPECIFIED - REMOVE FIRST THREAD ON ALL TAPPED HOLES BREAK ALL SHARP CORNERS .010 TO .020 STAMP OR MARK DRAWING NO.	DATE 06-10-03 SCALE	DRAWING NO. 127216 SHEET OF REV.		

THIS DRAWING IS THE PROPERTY OF HAYES MFG. INC. AND IS LOANED SUBJECT TO THE CONDITION THAT IT SHALL NOT BE REPRODUCED, COPIED, LOANED OR OTHERWISE DISPOSED OF, DIRECTLY OR INDIRECTLY. IT SHALL BE USED AS A MEANS OF REFERENCE TO WORK FURNISHED BY THIS COMPANY ONLY AND IS NOT TO BE SUBMITTED TO OUTSIDE PARTIES FOR EXAMINATION WITHOUT OUR CONSENT.