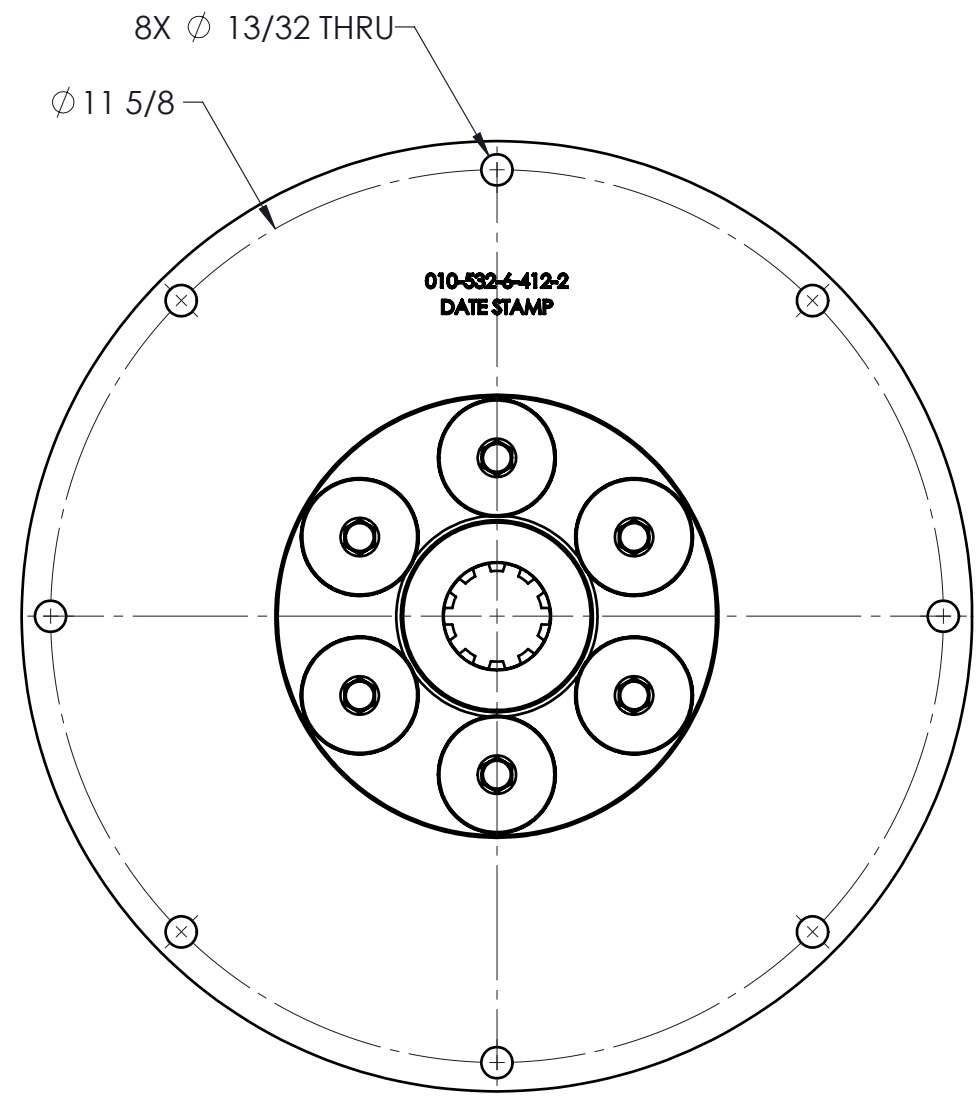
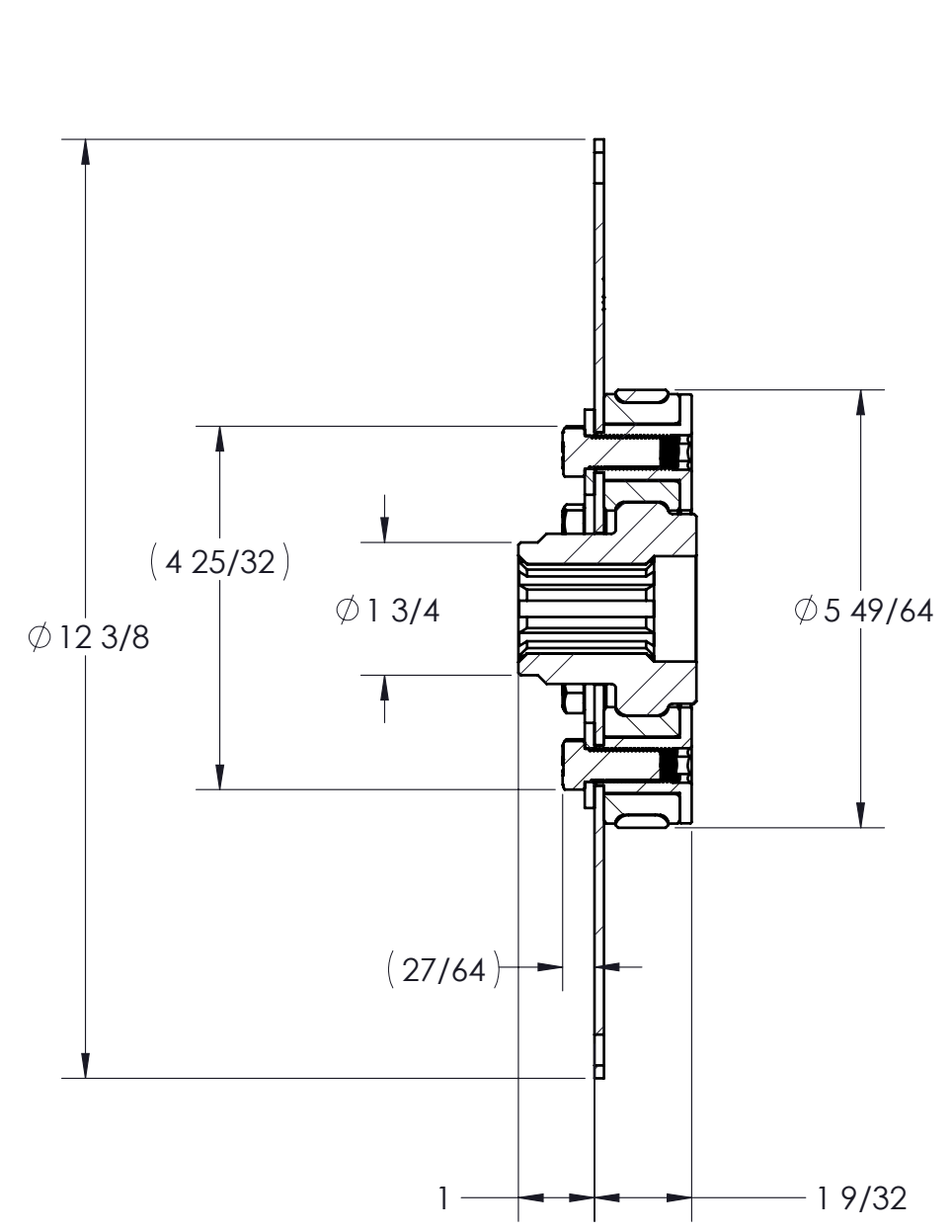


CUSTOMER DRAWING


REVISIONS					
ZONE	REV.	DESCRIPTION	DATE	APR 1	APR 2
3-B2, 4-B2	A	CHANGED TO PILOTED BUSHINGS	4/20/2023	ZS	



COUPLING IS NOT SERVICEABLE

PUMP DRIVE SPECS	
FLYWHEEL	SAE 10
PUMP SHAFT	10,1-3/8-10,120
HP RATING (@1800 RPM)	110

**PROPRIETARY AND CONFIDENTIAL**  
 THE INFORMATION CONTAINED IN THIS DRAWING IS THE SOLE PROPERTY OF HAYES MANUFACTURING. ANY REPRODUCTION IN PART OR AS A WHOLE WITHOUT THE WRITTEN PERMISSION OF HAYES MANUFACTURING IS PROHIBITED.

UNLESS OTHERWISE SPECIFIED: DIMENSIONS ARE IN INCHES TOLERANCES: FRACTIONAL $\pm 1/32$ ANGULAR: MACH $\pm 1/2^\circ$ TWO DECIMAL $\pm 0.01$ THREE DECIMAL $\pm 0.005$ FOUR DECIMAL $\pm 0.0005$		<b>SYMBOLS</b> □ FLATNESS    ⊙ CONCENTRICITY    ▭ COUNTERBORE ○ ROUNDNESS    ⊕ TRUE POSITION    ▽ COUNTERSINK // PARALLELISM    ⊥ PERPENDICULARITY    = SYMMETRIC ∅ DIAMETER    ↗ CIRCULAR RUN OUT *R* RADIUS    ↘ TOTAL RUN OUT		NAME	DATE	 TITLE: <b>FLYWHEEL COUPLING ASSEMBLY</b> DWG. NO. <b>127221</b> REV <b>A</b>
CLASS	SAE 10	DRAWN	PJH	4/20/2023		
DESCRIPTION	10,1-3/8-10,120	PCM APPR.				
MAKE	X	WEIGHT	10.4 LB	HEAT TREAT		
BUY		VOLUME	CU.IN.	FINISH		
				SHIP. APPR.	ZS	3/11/2023
				QA APPR.		
				MATERIAL		
				DO NOT SCALE		SHEET 1 OF 4