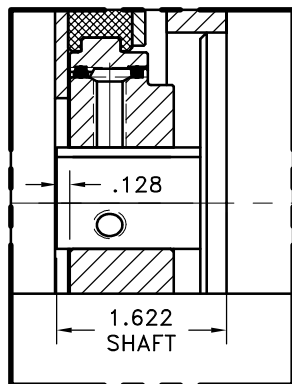
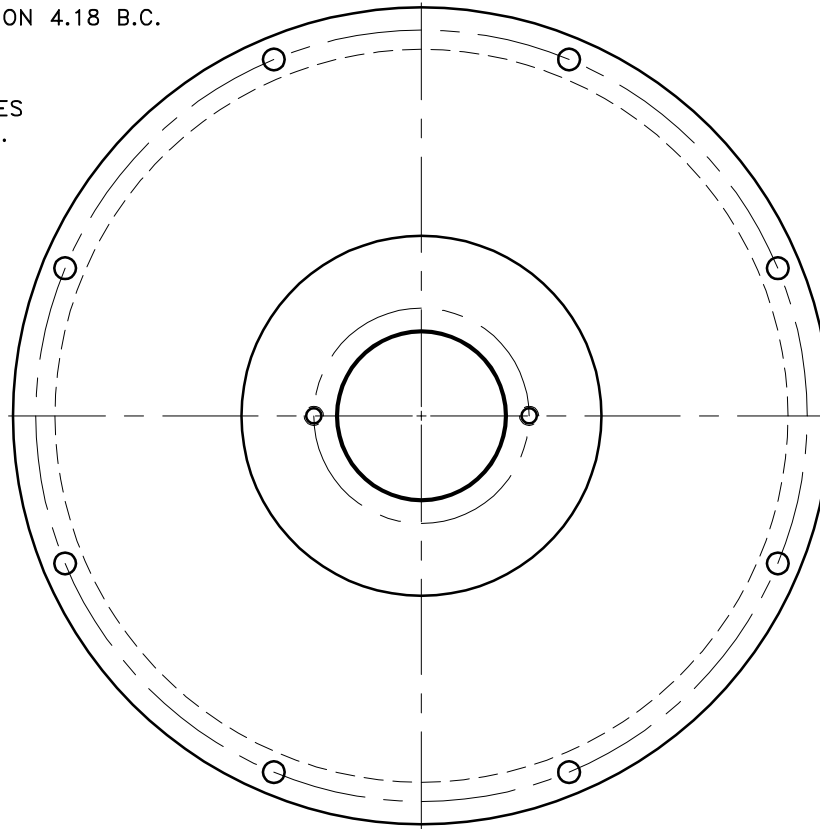
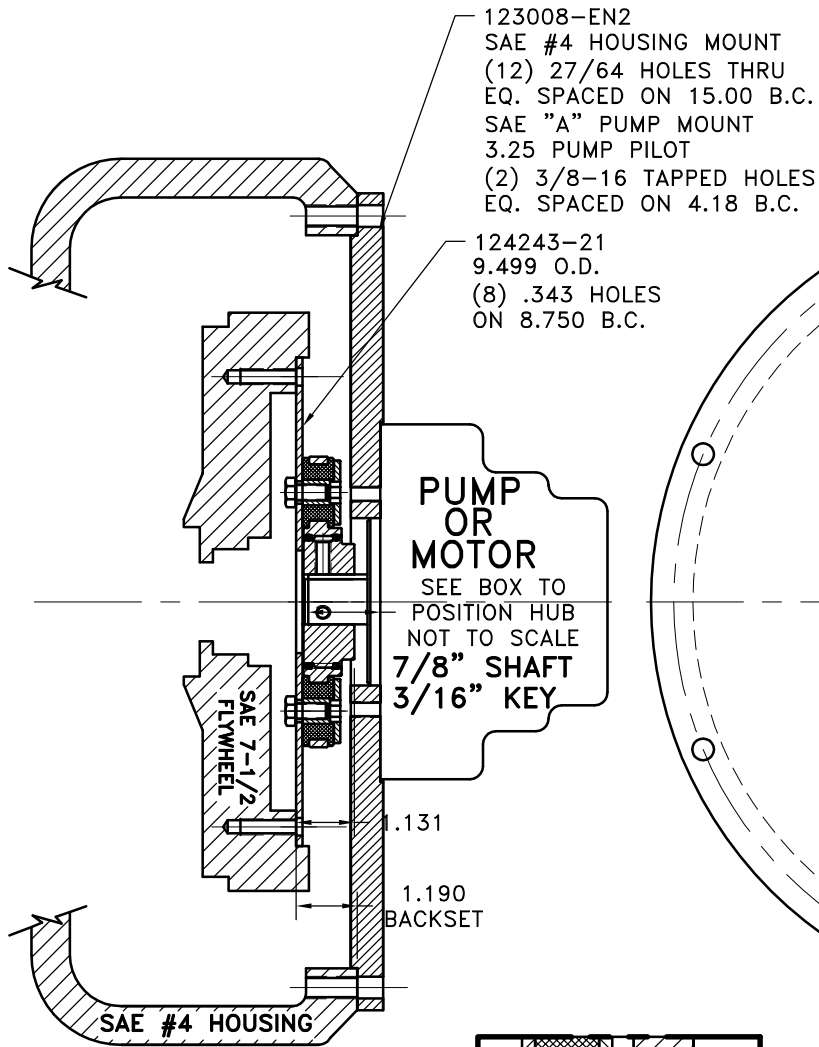


REV	DATE	CHANGE DESCRIPTION	MOD. BY	CK1	CK2
A	09/29/2003	CHANGED TO BOLTED.	ZS	RJH	HM



NOTE: REMOVE HUB FROM ASS'Y, PRESET HUB ON SHAFT & RE- ASSEMBLE USING NUT & BOLT GRADE LOC-TITE ON SET SCREWS

THIS DRAWING IS THE PROPERTY OF HAYES MFG. INC. AND IS LOANED SUBJECT TO THE CONDITION THAT IT SHALL NOT BE REPRODUCED, COPIED, LOANED OR OTHERWISE DISPOSED OF, DIRECTLY OR INDIRECTLY. IT SHALL BE USED AS A MEANS OF REFERENCE TO WORK FURNISHED BY THIS COMPANY ONLY AND IS NOT TO BE SUBMITTED TO OUTSIDE PARTIES FOR EXAMINATION WITHOUT OUR CONSENT.

COUPLING ASS'Y #125137

12	123008-EN2	PUMP MOUNT PLATE [4]	1
11	PURCHASE	5/16-18 x 5/8" SSSCP	1
10	PURCHASE	5/16-18 x 1/2" SSSCP	1
9	801912	GREASE	1
8	568-143	O-RING (124282-02)	1
7	568-142	O-RING (124838-09)	1
6	HX100	5/16-24 x 5/8" HHB	6
5	123729-01	THREADED BUSHING	6
4	H52500	NEOPRENE INSERT	6
3	124838-09	EXT. SPL. HUB [40 16/32\7/8_3/16]	1
2	124282-02	INT SPL. HUB [40 16/32\4.250]	1
1	124243-21	FLYWHEEL PLATE [7.5\4.250]	1

SYMBOLS	DET.	PART NUMBER	DESCRIPTION	QTY.
FLATNESS STRAIGHTNESS ANGULARITY SQUARENESS PARALLELISM CONCENTRICITY TRUE POSITION ROUNDNESS CIRCULAR RUN OUT TOTAL RUN OUT CYLINDRICITY FINISH	DO NOT SCALE DRAWING TOLERANCES UNLESS OTHERWISE SPECIFIED MAXIMUM ANGLE ±1/2° FRACTION ±1/32 DECIMAL .00 ±.01 .000 ±.005 .0000 ±.0005			
			TITLE FLYWHEEL COUPLING ASSY WITH PUMP MOUNT PLATE MATERIAL	
			DRAWN BY SIETING CHECKED BY RJH	DATE 07-24-03 SCALE
			DRAWING NO. 127264 SHEET OF REV.	

- UNLESS OTHERWISE SPECIFIED -
REMOVE FIRST THREAD
ON ALL TAPPED HOLES
BREAK ALL SHARP CORNERS .010 TO .020
STAMP OR MARK DRAWING NO.