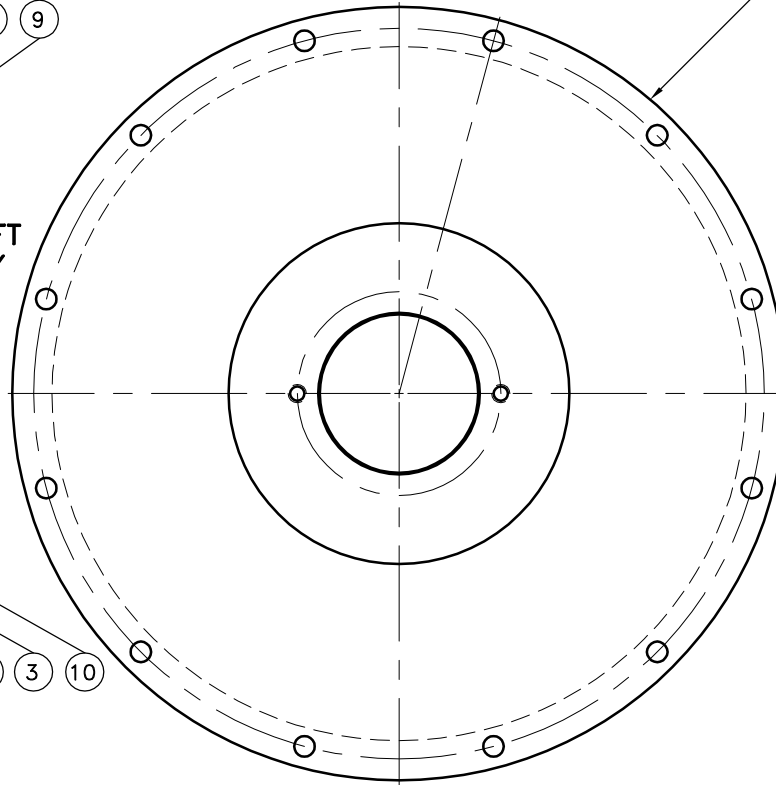
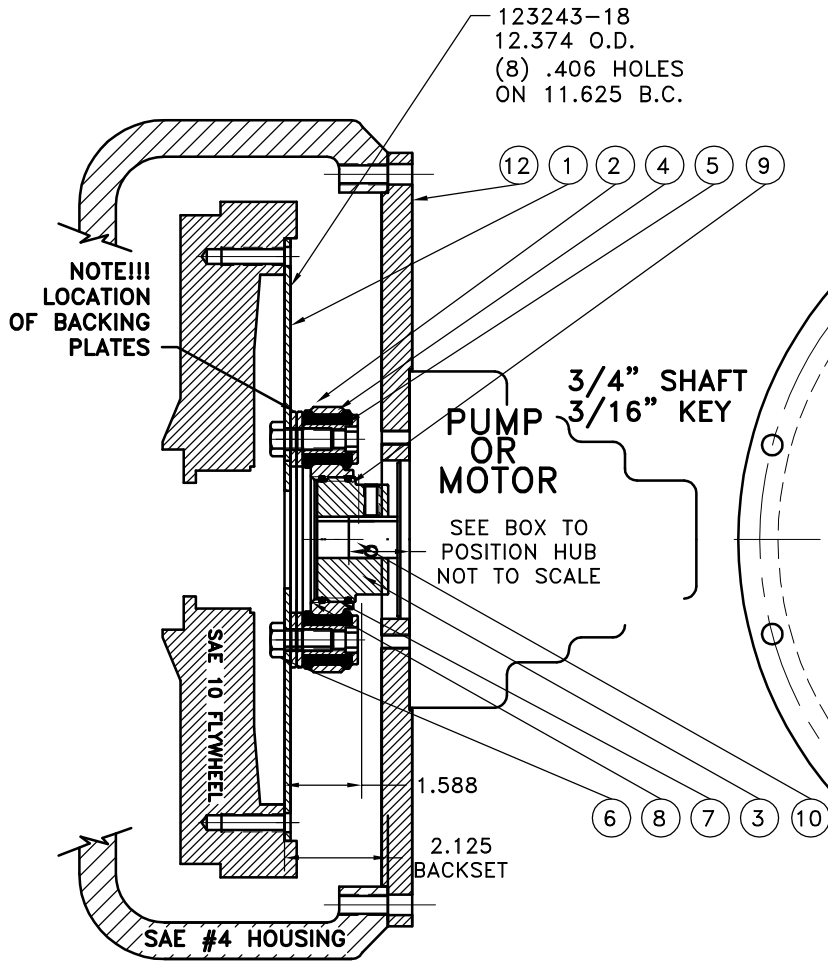


REV	DATE	CHANGE DESCRIPTION	MOD. BY	CK1	CK2
A1	09/01/2004	FIXED BACKING PLATE #	ZS	HM	RJH

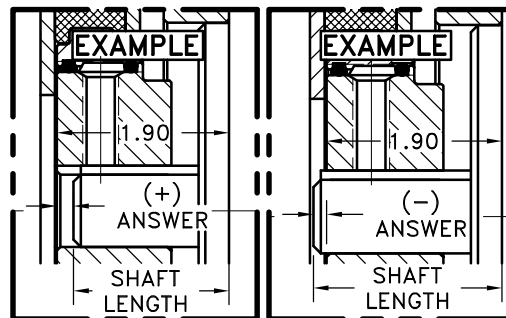


COUPLING ASS'Y #127615

UP TO 110 HP

REV	DATE	CHANGE DESCRIPTION	MOD. BY	CK1	CK2
13		123008-EN2 PUMP MOUNT PLATE [4]			1
12		801912 GREASE			1
11		PURCHASE 5/16-18 x 3/4" SSSCP			1
10		PURCHASE 5/16-18 x 5/8" SSSCP			1
9		568-143 O-RING (124473)			1
8		568-142 O-RING (126947-07)			1
7		HX200 7/16-20 x 1" HHB			6
6		123727 THREADED BUSHING			6
5		H62500 NEOPRENE INSERT			6
4		126947-07 EXT SPL HUB [40 16/32]			1
3		124473 INT SPL HUB [40 16/32\4.125]			1
2		124623 BACKING PLATE			2
1		123243-18 FLYWHEEL PLATE [10\4.125]			1

NOTE: THIS STEP IS IMPORTANT TO ENSURE FULL SPLINE ENGAGEMENT.



SYMBOLS	DET.	PART NUMBER	DESCRIPTION	QTY.
FLATNESS	DO NOT SCALE DRAWING			
STRAIGHTNESS	TOLERANCES UNLESS OTHERWISE SPECIFIED			
ANGULARITY	MAXIMUM			
SQUARENESS	ANGLE ±1/2°			
PARALLELISM	FRACTION ±1/32			
CONCENTRICITY	DECIMAL			
TRUE POSITION	.00 ±.01			
ROUNDNESS	.000 ±.005			
CIRCULAR RUN OUT	.0000 ±.0005			
TOTAL RUN OUT				
CYLINDRICITY				
FINISH				

HAYES MANUFACTURING INC. ®	
TITLE FLYWHEEL COUPLING ASSY WITH PUMP MOUNT PLATE	
MATERIAL	
DRAWN BY	DATE
SIETING	07-13-04
CHECKED BY	SCALE
RJH	
DRAWING NO.	127614
SHEET	OF REV.