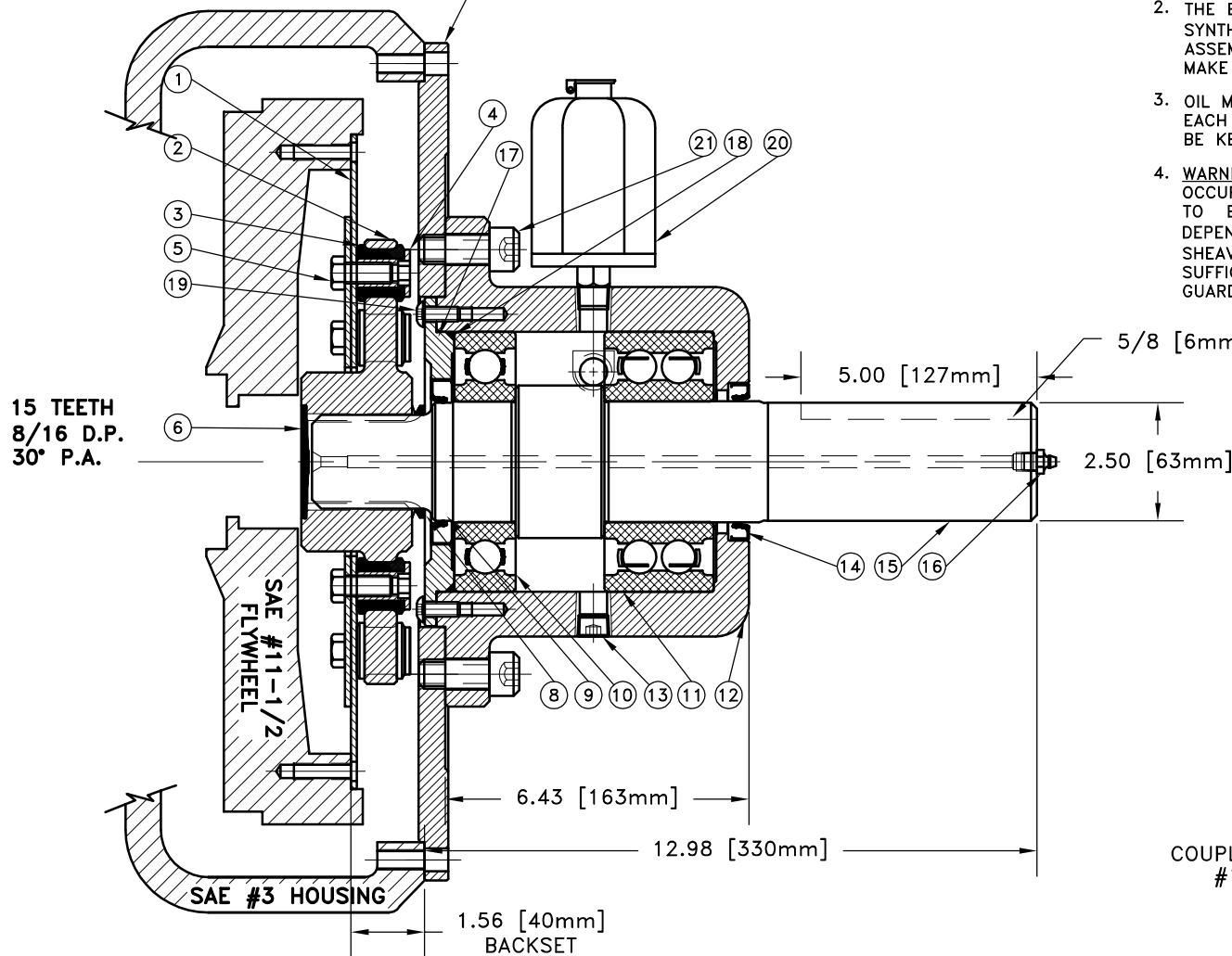


PT# 126233
SAE HOUSING MOUNT
27/64 DRILL THRU
(12) HOLES EQUALLY SPACED
ON A 16.38 B.C.



ATTENTION!!!

1. LIGHTLY GREASE INTERNAL AND EXTERNAL AREA OF SPLINE AT ASSEMBLY USING COUPLING GREASE (OVER GREASING COULD CAUSE A HYDRAULIC TYPE LIFT ON SEALS).
2. THE BEARING HOUSING IS SHIPPED FILLED WITH SYNTHETIC SW/30 OIL (3/4 OF A QUART). ONCE ASSEMBLY HAS BEEN INSTALLED ON ENGINE CHECK TO MAKE SURE THAT OIL IS STILL FULL.
3. OIL MUST BE CHANGED EVERY 800-1000 HOURS OR EACH MONTH WHICHEVER COMES FIRST. RECORDS MUST BE KEPT ON OIL CHANGES OR WARRANTY WILL BE VOID.
4. **WARNING!!!** INJURY OR DEATH FROM A ROTATING STUB SHAFT CAN OCCUR IF A CONDITION EXISTS WHICH WOULD CAUSE THE SHAFT TO BREAK OR COME APART FROM ANY PART OF THE ASSEMBLY. DEPENDING UPON THE APPLICATION (FOR EXAMPLE, FAN, PULLEY, SHEAVE, ETC.), THE AREA AROUND THE STUB SHAFT MUST BE SUFFICIENTLY GUARDED SO THAT IN THE EVENT OF FAILURE, THE GUARD WILL CONTAIN ANY AIRBORNE PARTS.

REV	DATE	CHANGE DESCRIPTION	MOD. BY	CK1	CK2
B	10/24/2007	CHANGES SHAFT DESIGN	ZS	RJH	HM

23	126233	PUMP MOUNT PLATE	1
22	BOLT	5/8-11x1-1/2 SHCS	10
21	31183	OIL RESERVOIR	1
20	PURCHASE	5/16-18 x 3/4" BUTTON HEAD	6
19	568-252	O-RING	1
18	128775	REAR SEAL ADAPTER	1
17	600000	GREASE ZERT	1
16	126007	SPLINED SHAFT	1
15	25420	SEAL	1
14	3/8-18	DRAIN/OVERFLOW PLUG	2
13	126006	BEARING HOUSING	1
12	5313W BR	DOUBLE ROLLER BEARING	1
11	313WDN	SINGLE ROLLER BEARING	1
10	24980	SEAL	1
9	400500	V-RING SEAL	1
8	801912	GREASE	4
7	R-0017-03	GREASE PLUG	1
6	BOLT	7/16-20-1 HHB Y D	27
5	123727	THREADED BUSHING	27
4	H62500	NEOPRENE INSERT	27
3	127686	COUPLING HUB	1
2	127687	BACKING PLATE	1
1	126046	FLYWHEEL PLATE	1

SUB ASSY
#126011

COUPLING ASS'Y
#127688

WEIGHTS:
PUMP MOUNT PLATE: 64.1 LBS.
FLYWHEEL COUPLING: 28.6 LBS.
BEARING HOUSING ASS'Y: 97 LBS.

THIS DRAWING IS THE PROPERTY OF HAYES MFG. INC. AND IS LOANED SUBJECT TO THE CONDITION THAT IT SHALL NOT BE REPRODUCED, COPIED, LOANED OR OTHERWISE DISPOSED OF, DIRECTLY OR INDIRECTLY. IT SHALL BE USED AS A MEANS OF REFERENCE TO WORK FURNISHED BY THIS COMPANY ONLY AND IS NOT TO BE SUBMITTED TO OUTSIDE PARTIES FOR EXAMINATION WITHOUT OUR CONSENT.

SYMBOLS	DET.	PART NUMBER	DESCRIPTION	QTY.
FLATNESS STRAIGHTNESS ANGULARITY PERPENDICULARITY PARALLELISM CONCENTRICITY TRUE POSITION ROUNDNESS CIRCULAR RUN OUT TOTAL RUN OUT CYLINDRICITY FINISH	DO NOT SCALE DRAWING TOLERANCES UNLESS OTHERWISE SPECIFIED .125" MAXIMUM ANGLE ±1/2° FRACTION ±1/32 DECIMAL .00 ±.01 .000 ±.005 .0000 ±.0005	MAKE: <input type="checkbox"/> BUY: <input type="checkbox"/>	HAYES MANUFACTURING INC. ® TITLE BEARING SUPPORTED STUB SHAFT ASS'Y WITH PUMP MOUNT PLATE MATERIAL	
CLASS	DESCRIPTION	DRAWN BY SIETING	DATE 09-16-04	DRAWING NO. 127667
		CHECKED BY	SCALE	SHEET OF REV.