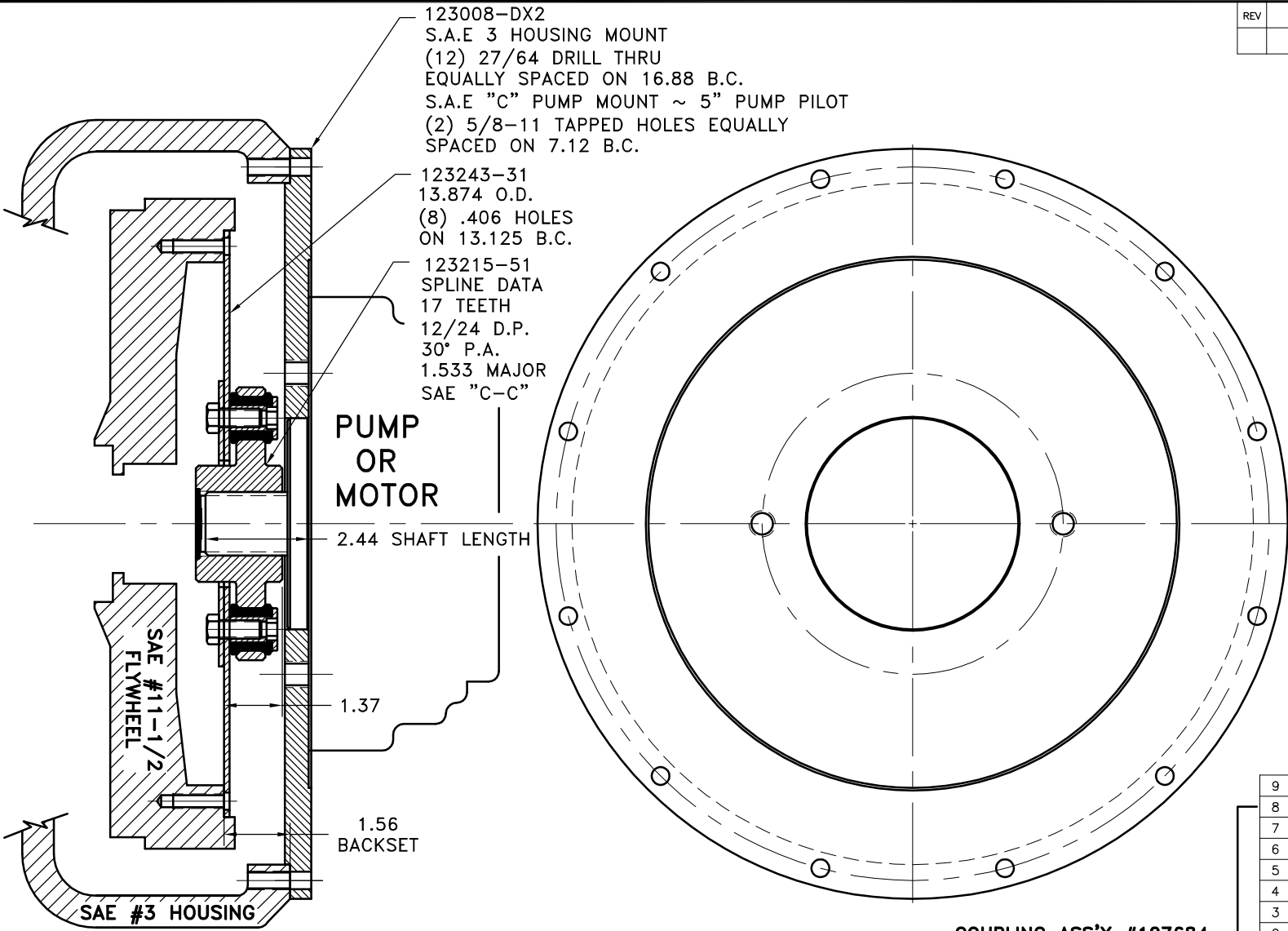


REV	DATE	CHANGE DESCRIPTION	MOD. BY	CK1	CK2



UP TO 150 HP

REV	PART NUMBER	DESCRIPTION	QTY.
9	123008-DX2	PUMP MOUNT PLATE [3]	1
8	801912	GREASE	1
7	HP-1625-S-62	HUBBARD PLUG	1
6	HX200	7/16-20 x 1" HHB	8
5	123727	THREADED BUSHING	8
4	H62500	NEOPRENE INSERT	8
3	123215-51	COUP. HUB [17T 12/24\5.000]	1
2	124657-02	BACKING PLATE	1
1	123243-31	FLYWHEEL PLATE [11.5\5.000]	1

SYMBOLS	DET.	PART NUMBER	DESCRIPTION	QTY.
▭ FLATNESS — STRAIGHTNESS ∠ ANGULARITY ⊥ SQUARENESS ∥ PARALLELISM ⊕ CONCENTRICITY ⊙ TRUE POSITION ○ ROUNDNESS ⊙ CIRCULAR RUN OUT ⊙ TOTAL RUN OUT ⊙ CYLINDRICITY ✓ FINISH	DO NOT SCALE DRAWING TOLERANCES UNLESS OTHERWISE SPECIFIED MAXIMUM ANGLE ±1/2° FRACTION ±1/32 DECIMAL .00 ±.01 .000 ±.005 .0000 ±.0005			
- UNLESS OTHERWISE SPECIFIED - REMOVE FIRST THREAD ON ALL TAPPED HOLES BREAK ALL SHARP CORNERS .010 TO .020 STAMP OR MARK DRAWING NO.			<b>TITLE</b> FLYWHEEL COUPLING ASSY WITH PUMP MOUNT PLATE	<b>DRAWN BY</b> SIETING
			<b>DATE</b> 09-14-04	<b>DRAWING NO.</b> 127682
			<b>CHECKED BY</b> RJH	<b>SCALE</b> SHEET OF REV.

THIS DRAWING IS THE PROPERTY OF HAYES MFG. INC. AND IS LOANED SUBJECT TO THE CONDITION THAT IT SHALL NOT BE REPRODUCED, COPIED, LOANED OR OTHERWISE DISPOSED OF, DIRECTLY OR INDIRECTLY. IT SHALL BE USED AS A MEANS OF REFERENCE TO WORK FURNISHED BY THIS COMPANY ONLY AND IS NOT TO BE SUBMITTED TO OUTSIDE PARTIES FOR EXAMINATION WITHOUT OUR CONSENT.