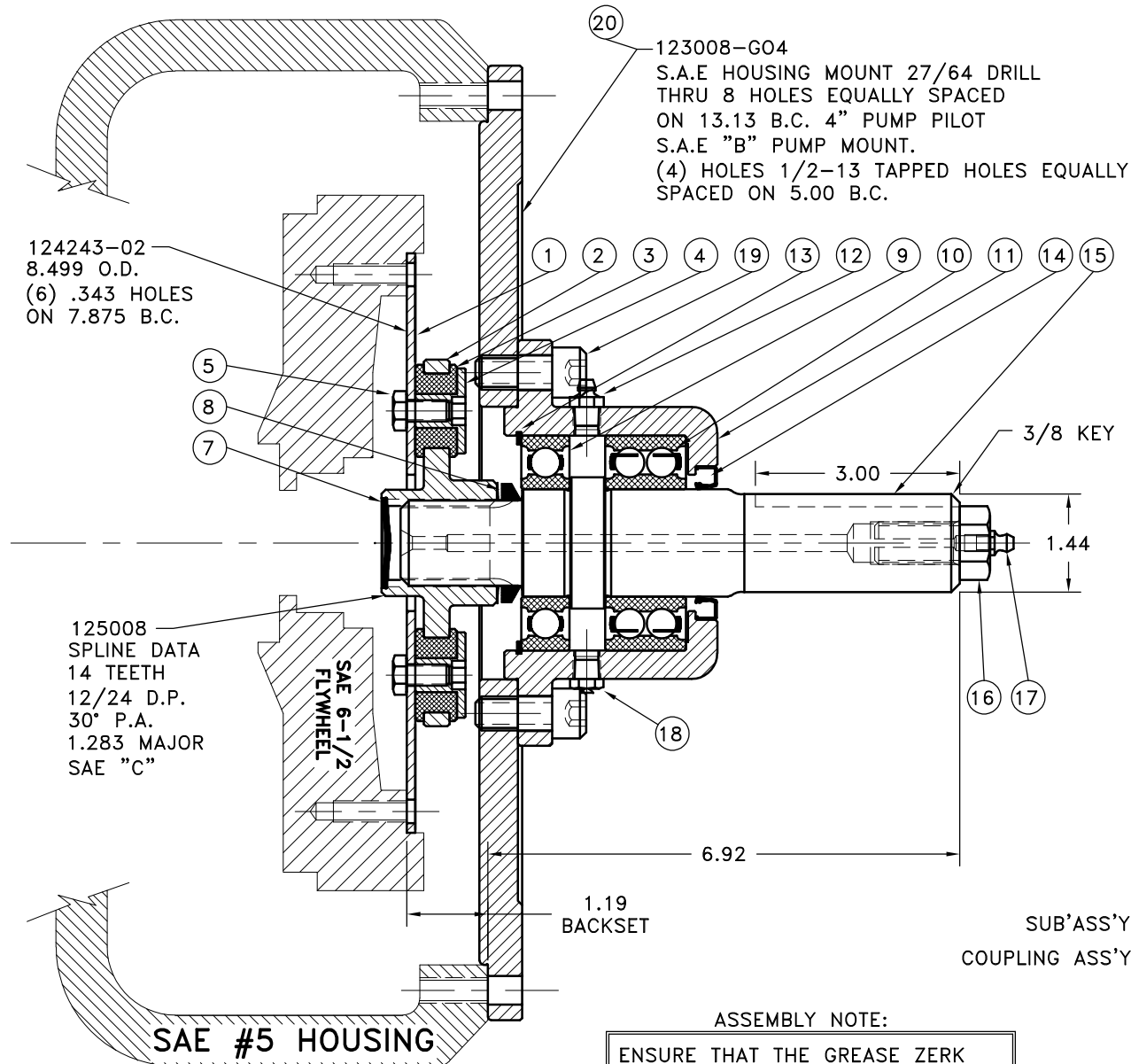


REV	DATE	CHANGE DESCRIPTION	MOD. BY	CK1	CK2
B	06/09/2016	CHANGED SEAL	BSL	JM	HM



NOTES:

1. LIGHTLY GREASE INTERNAL AND EXTERNAL AREA OF SPLINE AT ASSEMBLY USING SUPPLIED COUPLING GREASE (OVER GREASING COULD CAUSE A HYDRAULIC TYPE LIFT ON SEALS).
2. **AT ASSEMBLY GREASE BEARING HOUSING UNTIL PIN EXTENDS FROM PRESSURE RELIEF VALVE (LOCATED 180° FROM GREASE ZERK).** USE OF AN UNLEADED EXTREME PRESSURE LITHIUM GREASE, WITH NLGI NO.2 GRADE IS RECOMMENDED. RUN TIME BETWEEN GREASINGS NOT TO EXCEED 2,000 HOURS.
3. **WARNING!!!** INJURY OR DEATH FROM A ROTATING STUB SHAFT CAN OCCUR IF A CONDITION EXISTS WHICH WOULD CAUSE THE SHAFT TO BREAK OR COME APART FROM ANY PART OF THE ASSEMBLY. DEPENDING UPON THE APPLICATION (FOR EXAMPLE, FAN, PULLEY, SHEAVE, ETC.), THE AREA AROUND THE STUB SHAFT MUST BE SUFFICIENTLY GUARDED SO THAT IN THE EVENT OF FAILURE, THE GUARD WILL CONTAIN ANY AIRBORNE PARTS.

REPLACES: 125857

20	123008-G04	PUMP MOUNT PLATE	1
19	BOLT	1/2-13x1-1/8 SHCS	4
18	1093K11	RELIEF VALVE	1
17	609000	GREASE ZERK	1
16	125294	SPECIAL 5/8-11 HHB	1
15	126102	SPLINED SHAFT	1
14	132015	SEAL	1
13	RR-314	SNAP RING	1
12	600000	GREASE ZERK	1
11	125007	BEARING HOUSING	1
10	5208WD	DOUBLE BEARING	1
9	208KD	BEARING	1
8	VS-032	V-RING	1
7	R-0017-01	GREASE PLUG	1
6	801912	GREASE	1
5	BOLT	5/16-24x5/8 HHB Y D	8
4	123729-01	THREADED BUSHING	8
3	H52500	NEOPRENE INSERT	8
2	125008	COUPLING HUB	1
1	124243-02	FLYWHEEL PLATE	1

SUB'ASS'Y #126103
COUPLING ASS'Y #125375

ASSEMBLY NOTE:

ENSURE THAT THE GREASE ZERK AND RELIEF VALVE ARE LOCATED HORIZONTAL WHEN MOUNTING ON TO PUMP MOUNT PLATE OR HOUSING.

THIS DRAWING IS THE PROPERTY OF HAYES MFG. INC. AND IS LOANED SUBJECT TO THE CONDITION THAT IT SHALL NOT BE REPRODUCED, COPIED, LOANED OR OTHERWISE DISPOSED OF, DIRECTLY OR INDIRECTLY. IT SHALL BE USED AS A MEANS OF REFERENCE TO WORK FURNISHED BY THIS COMPANY ONLY AND IS NOT TO BE SUBMITTED TO OUTSIDE PARTIES FOR EXAMINATION WITHOUT OUR CONSENT.

SYMBOLS		DET.	PART NUMBER	DESCRIPTION	QTY.
DO NOT SCALE DRAWING TOLERANCES UNLESS OTHERWISE SPECIFIED 125 MAXIMUM ANGLE ±1/2° FRACTION ±1/32 DECIMAL .00 ±.01 .000 ±.005 .0000 ±.0005 FINISH					
CLASS BS ASSY DESCRIPTION 6-1/2,5,1-7/16,3		MAKE: <input checked="" type="checkbox"/> BUY: <input type="checkbox"/>		TITLE BEARING SUPPORTED STUB SHAFT ASSY MATERIAL	
DRAWN BY SIETING CHECKED BY		DATE 02-07-2012 SCALE		DRAWING NO. 130354 SHEET OF REV.	

11/23/2016 1:15:42 PM